

V-Series Hydraulic Couplings

Interchange Data:

- Interchangeable to MIL-C-51234
- Snap-Tite H/IH and Faster TNV/TNL

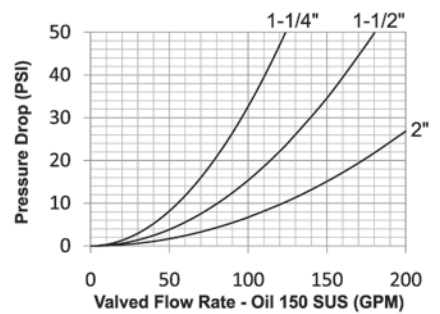
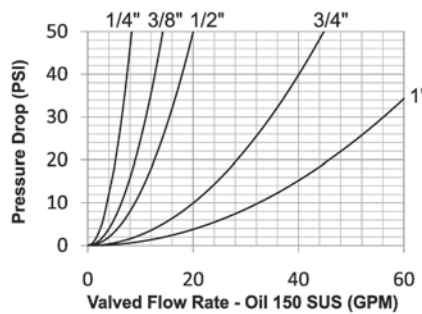
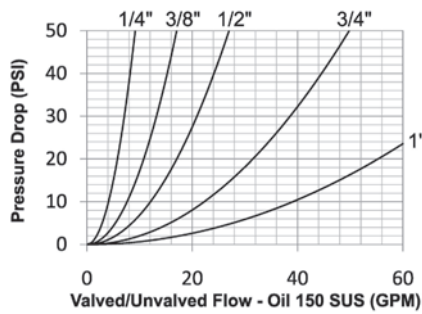
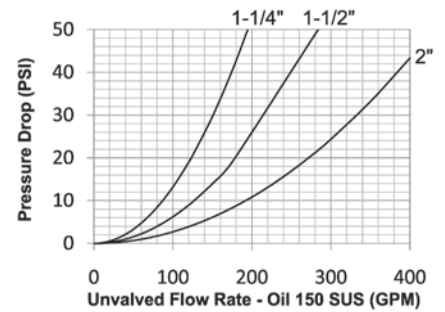
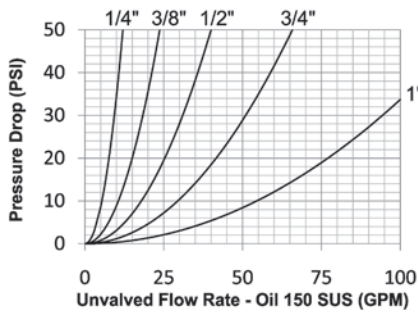
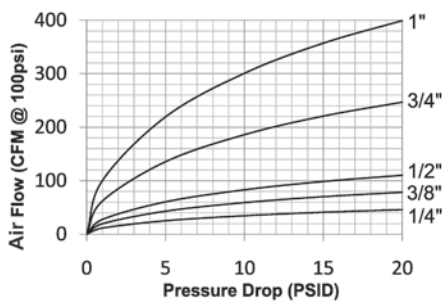
Materials:

- Machined components are manufactured using solid steel, brass, or 316 stainless steel bar stock.
- Stainless steel balls, retaining rings, and springs maximize corrosion resistance and extend service life.
- Steel componentry is plated using ROHS Compliant Trivalent Chrome.
- Steel coupler sleeves are hardened to resist deformation and maximize service life.
- Steel nipples are machined from high-strength steel and induction hardened.
- Tubular 'TV' valves are constructed from steel bar stock and are designed for optimum performance in pneumatic applications.

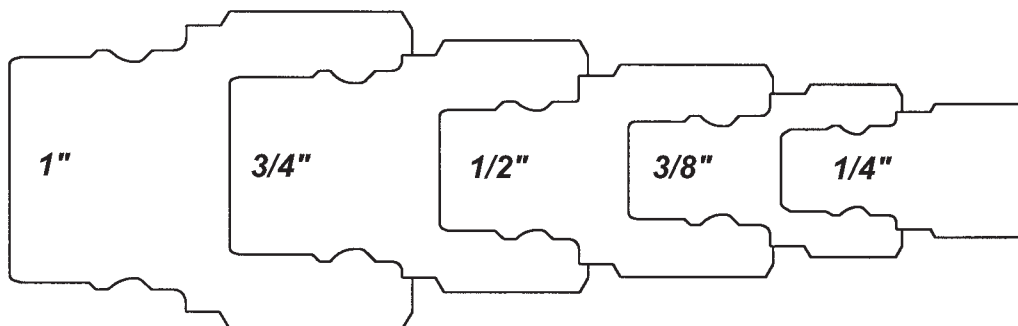
Seal Components:

- Nitrile (Buna-N) seals are standard, providing a temperature range of -40°F to +250°F (-40°C to +121°C).
- All couplers incorporate a PTFE anti-extrusion ring to protect the seal components from dynamic impulse damage.
- ¼" to 1" valve seals are crimped in place to maintain integrity during excessive flow conditions and pressurized connection.
- 1¼" to 2" valve O-rings are retained by a unique seal-groove profile and are field replaceable.

Note: Air flow data is presented using a coupler with a 'TV' valve and unvalved nipple. This configuration provides the optimal performance for pneumatic applications.



V Series Profiles



V-Series Hydraulic Couplings

Rated Pressure Chart:

Body Size	V-Series Snap-Tite H/H Interchange (Valved Connected)											
	Steel Coupler/Plug				Brass Coupler/Plug				316 Stainless Coupler/Plug			
	Maximum Working		Burst		Maximum Working		Burst		Maximum Working		Burst	
	PSI	Bar	PSI	Bar	PSI	Bar	PSI	Bar	PSI	Bar	PSI	Bar
1/4"	6,500	450	12,700	876	2,250	150	5,000	345	5,000	345	10,000	700
3/8"	4,500	310	10,500	700	2,250	150	5,300	350	4,000	275	8,000	550
1/2"	4,000	275	9,600	650	2,000	130	5,700	390	3,750	260	7,500	500
3/4"	3,500	240	9,100	600	2,000	130	5,300	350	2,000	130	7,500	500
1"	2,000	130	9,500	650	1,750	120	5,000	345	2,000	130	5,000	345
1-1/4"	1,750	120	5,000	345	350	24	1,000	70	1,500	100	3,000	200
1-1/2"	1,500	100	5,000	345	350	24	1,200	80	1,500	100	3,000	200
2"	1,500	100	4,000	275	400	28	1,000	70	500	34	1,000	70

Body Size	V-Series Snap-Tite H/H Interchange (Unvalved Connected)											
	Steel Coupler/Plug				Brass Coupler/Plug				316 SS Coupler/Plug			
	Maximum Working		Burst		Maximum Working		Burst		Maximum Working		Burst	
	PSI	Bar	PSI	Bar	PSI	Bar	PSI	Bar	PSI	Bar	PSI	Bar
1/4"	11,000	760	29,500	2,000	4,000	275	14,200	980	10,000	670	29,200	2,000
3/8"	11,000	760	29,900	2,000	4,000	275	14,500	1,000	8,000	550	27,900	1,900
1/2"	11,000	760	29,300	2,000	4,000	275	14,500	1,000	8,000	550	24,600	1,700
3/4"	9,000	620	19,300	1,300	3,500	250	11,100	750	7,000	480	22,600	1,500
1"	6,000	400	15,900	1,100	3,000	200	8,200	560	4,000	275	15,500	1,000
1-1/4"	5,000	345	10,000	700	1,000	70	4,000	275	3,000	200	10,000	700
1-1/2"	5,000	345	10,000	700	1,000	70	4,000	275	3,000	200	10,000	700
2"	4,000	275	8,000	550	750	50	2,800	190	1,000	70	6,000	400

Technical Specifications:

Body Size	Interchange Standards			Functional Parameters				
	U.S. Military	International Standards	ANSI/NFPA Standards	Locking Ball Quantity	Air Inclusion	Fluid Loss	Vacuum Inch HG	Flow $\Delta P = 22$ PSI
1/4"	MIL-C-51234	-	-	6	2.0cc	0.2cc	26.7	5.5 GPM
3/8"	MIL-C-51234	-	-	6	3.5cc	3.2cc	26.7	9.5 GPM
1/2"	MIL-C-51234	-	-	9	4.0cc	4.0cc	26.7	13 GPM
3/4"	MIL-C-51234	-	-	9	14.0cc	14.0cc	26.7	30 GPM
1"	MIL-C-51234	-	-	12	21.0cc	20.0cc	26.7	48 GPM
1-1/4"	MIL-C-51234	-	-	12	45.0cc	45.0cc	N/R	82 GPM
1-1/2"	MIL-C-51234	-	-	12	80.0cc	80.0cc	N/R	120 GPM
2"	MIL-C-51234	-	-	12	150.0cc	150.0cc	N/R	185 GPM

Note: Minimum burst pressure ratings were established under laboratory conditions using a Static Burst Unit (SBU). For high impulse applications and to meet Det Norske Veritas (DNV) compliance, the operating pressure must be divided by two (2) to ensure a 4:1 safety factor during system operation.

V-Series Hydraulic Couplings

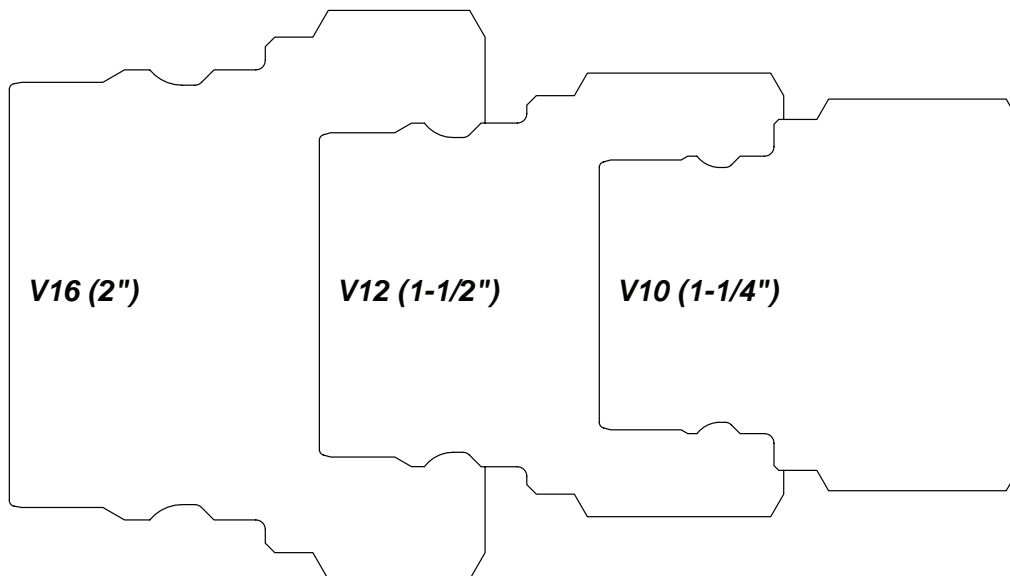
List Price Seal Option Adders:

Body Size	Standard Seal Options												Kalrez® Seal Options							
	Viton®		EPDM		Steam-EP		FDA Viton®		Mil-Nitrile		Fuel Nitrile		Silicone		4079		6375		7075	
	Pre	Add \$	Pre	Add \$	Pre	Add \$	Pre	Add \$	Pre	Add \$	Pre	Add \$	Pre	Add \$	Pre	Add \$	Pre	Add \$	Pre	Add \$
1/4"	F-	\$.00	P-		PS-		D-		M-		JF-		S-		K4-	POR	K6-	POR	K7-	POR
3/8"	F-	.00	P-		PS-		D-		M-		JF-		S-		K4-	POR	K6-	POR	K7-	POR
1/2"	F-	.00	P-		PS-		D-		M-		JF-		S-		K4-	POR	K6-	POR	K7-	POR
3/4"	F-	.00	P-		PS-		D-		M-		JF-		S-		K4-	POR	K6-	POR	K7-	POR
1"	F-	.00	P-		PS-		D-		M-		JF-		S-		K4-	POR	K6-	POR	K7-	POR
1-1/4"	F-	.00	P-		PS-		D-		M-		JF-		S-		K4-	POR	K6-	POR	K7-	POR
1-1/2"	F-	.00	P-		PS-		D-		M-		JF-		S-		K4-	POR	K6-	POR	K7-	POR
2"	F-	.00	P-		PS-		D-		M-		JF-		S-		K4-	POR	K6-	POR	K7-	POR

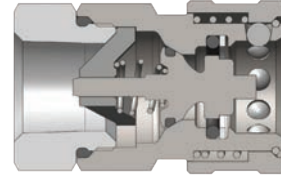
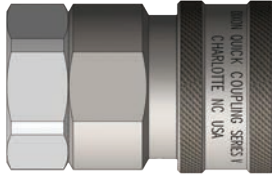
List Price Option Adders:

Body Size	Valve Options									Sleeve Options						Treatments			
	Unvalved		Tubular		Steel		Brass		316 SS		Sleeve-Lock		Flanged		Sil-Flange		Oxy-Clean		
	Suf	Add \$	Suf	Add \$	Suf	Add \$	Suf	Add \$	Suf	Add \$	Suf	Add \$	Suf	Add \$	Suf	Add \$	Suf	Add \$	Suf
1/4"	-E	-	-TV		-ZV	\$.00	-BV	\$.00	SSV	\$2.60	-LS	\$4.20	-FS	N/A	FSB	N/A	-C1	\$12.00	
3/8"	-E	-	-TV		-ZV	.00	-BV	.00	SSV	2.70	-LS	4.90	-FS	N/A	FSB	N/A	-C1	12.00	
1/2"	-E	-	-TV		-ZV	.00	-BV	.00	SSV	4.80	-LS	5.50	-FS	N/A	FSB	N/A	-C1	14.00	
3/4"	-E	-	-TV		-ZV	.00	-BV	.00	SSV	6.00	-LS	6.60	-FS	N/A	FSB	N/A	-C1	14.00	
1"	-E	-	-TV		-ZV	.00	-BV	.00	SSV	8.80	-LS	10.00	-FS	N/A	FSB	N/A	-C1	16.00	
1-1/4"	-E	-	-TV	N/A	-ZV	.00	-BV	.00	SSV	32.55	-LS	19.00	-FS	N/A	FSB	N/A	-C1	20.00	
1-1/2"	-E	-	-TV	N/A	-ZV	.00	-BV	.00	SSV	38.20	-LS	26.50	-FS	N/A	FSB	N/A	-C1	20.00	
2"	-E	-	-TV	N/A	-ZV	.00	-BV	.00	SSV	46.90	-LS	26.50	-FS	N/A	FSB	N/A	-C1	20.00	

Large V Series Profiles

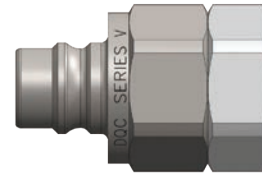
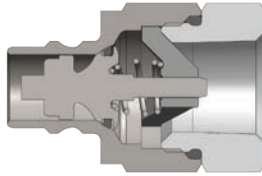


V-Series Hydraulic Couplings



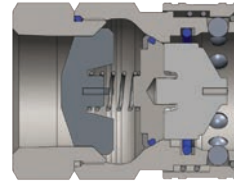
Body Size	V-Series Snap-Tite H/IH Interchange Valved Coupler (Female Threads)											
	Part Detail				Length		Maximum OD		Hex Inch	Weight Lb	Package Qty	
	Part Number	Threads	Material		Inch	mm	Inch	mm			Bag	Box
1/4"	2VF1	1/8" - 27 NPTF	steel		1.68	42.7	0.99	25.1	7/8"	0.22	5	50
1/4"	2VF2	1/4" - 18 NPTF	steel		1.68	42.7	0.99	25.1	7/8"	0.20	5	50
1/4"	2VF2-B	1/4" - 18 NPTF	brass		1.68	42.7	0.99	25.1	7/8"	0.20	5	50
1/4"	2VF2-SS	1/4" - 18 NPTF	316 stainless		1.68	42.7	0.99	25.1	7/8"	0.20	5	50
1/4"	2VBF2	1/4" - 19 BSPP	steel		1.81	46.0	0.99	25.1	7/8"	0.20	5	50
1/4"	2VBF2-B	1/4" - 19 BSPP	brass		1.81	46.0	0.99	25.1	7/8"	0.20	5	50
1/4"	2VBF2-SS	1/4" - 19 BSPP	316 stainless		1.81	46.0	0.99	25.1	7/8"	0.20	5	50
1/4"	2VOF2	7/16" - 20 ORB	steel		1.81	46.0	0.99	25.1	7/8"	0.23	5	50
3/8"	3VF3	3/8" - 18 NPTF	steel		1.94	49.3	1.18	30.0	1"	0.37	5	50
3/8"	3VF3-B	3/8" - 18 NPTF	brass		1.94	49.3	1.18	30.0	1"	0.37	5	50
3/8"	3VF3-SS	3/8" - 18 NPTF	316 stainless		1.94	49.3	1.18	30.0	1"	0.38	5	50
3/8"	3VBF3	3/8" - 19 BSPP	steel		2.01	51.1	1.18	30.0	1"	0.37	5	50
3/8"	3VBF3-B	3/8" - 19 BSPP	brass		2.01	51.1	1.18	30.0	1"	0.37	5	50
3/8"	3VBF3-SS	3/8" - 19 BSPP	316 stainless		2.01	51.1	1.18	30.0	1"	0.38	5	50
3/8"	3VOF3	9/16" - 18 ORB	steel		2.01	51.1	1.18	30.0	1"	0.40	5	50
3/8"	3VF4	1/2" - 14 NPTF	steel		2.01	51.1	1.18	30.0	1"	0.49	5	50
1/2"	4VF4	1/2" - 14 NPTF	steel		2.13	54.1	1.36	34.5	1-3/16"	0.49	5	25
1/2"	4VF4-B	1/2" - 14 NPTF	brass		2.13	54.1	1.36	34.5	1-3/16"	0.49	5	25
1/2"	4VF4-SS	1/2" - 14 NPTF	316 stainless		2.13	54.1	1.36	34.5	1-3/16"	0.52	5	25
1/2"	4VBF4	1/2" - 14 BSPP	steel		2.13	54.1	1.36	34.5	1-3/16"	0.49	5	25
1/2"	4VBF4-B	1/2" - 14 BSPP	brass		2.13	54.1	1.36	34.5	1-3/16"	0.49	5	25
1/2"	4VBF4-SS	1/2" - 14 BSPP	316 stainless		2.13	54.1	1.36	34.5	1-3/16"	0.52	5	25
1/2"	4VOF4	3/4" - 16 ORB	steel		2.13	54.1	1.36	34.5	1-3/16"	0.54	5	25
1/2"	4VF6	3/4" - 14 NPTF	steel		2.13	54.1	1.36	34.5	1-3/16"	0.58	5	25
3/4"	6VF6	3/4" - 14 NPTF	steel		2.47	62.7	1.67	42.4	1-1/2"	0.88	5	20
3/4"	6VF6-B	3/4" - 14 NPTF	brass		2.47	62.7	1.67	42.4	1-1/2"	0.88	5	20
3/4"	6VF6-SS	3/4" - 14 NPTF	316 stainless		2.47	62.7	1.67	42.4	1-1/2"	0.94	5	20
3/4"	6VBF6	3/4" - 14 BSPP	steel		2.96	75.2	1.67	42.4	1-1/2"	0.88	5	20
3/4"	6VBF6-B	3/4" - 14 BSPP	brass		2.96	75.2	1.67	42.4	1-1/2"	0.88	5	20
3/4"	6VBF6-SS	3/4" - 14 BSPP	316 stainless		2.96	75.2	1.67	42.4	1-1/2"	0.94	5	20
3/4"	6VOF6	1-1/16" - 12 ORB	steel		2.96	75.2	1.67	42.4	1-1/2"	0.99	5	20
1"	8VF8	1" - 11 1/2 NPTF	steel		2.70	68.6	2.06	52.3	1-7/8"	1.33	-	10
1"	8VF8-B	1" - 11 1/2 NPTF	brass		2.70	68.6	2.06	52.3	1-7/8"	1.33	-	10
1"	8VF8-SS	1" - 11 1/2 NPTF	316 stainless		2.70	68.6	2.06	52.3	1-7/8"	1.33	-	10
1"	8VBF8	1" - 11 BSPP	steel		2.97	75.4	2.06	52.3	1-7/8"	1.33	-	10
1"	8VBF8-B	1" - 11 BSPP	brass		2.97	75.4	2.06	52.3	1-7/8"	1.33	-	10
1"	8VBF8-SS	1" - 11 BSPP	316 stainless		2.97	75.4	2.06	52.3	1-7/8"	1.33	-	10
1"	8VOF8	1-5/16" - 12 ORB	steel		2.97	75.4	2.06	52.3	1-7/8"	1.42	-	10

V-Series Hydraulic Couplings



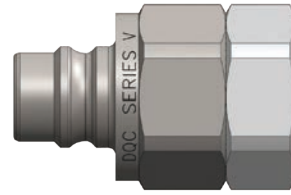
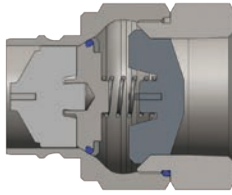
Body Size	V-Series Snap-Tite H/H Interchange Valved Nipple (Female Threads)											
	Part Detail				Length		Maximum OD		Hex Inch	Weight Lb	Package Qty	
	Part Number	Threads	Material		Inch	mm	Inch	mm			Bag	Box
1/4"	V2F1	1/8" - 27 NPTF	steel		1.62	41.1	0.97	24.6	7/8"	0.17	5	50
1/4"	V2F2	1/4" - 18 NPTF	steel		1.62	41.1	0.97	24.6	7/8"	0.14	5	50
1/4"	V2F2-B	1/4" - 18 NPTF	brass		1.62	41.1	0.97	24.6	7/8"	0.14	5	50
1/4"	V2F2-SS	1/4" - 18 NPTF	316 stainless		1.62	41.1	0.97	24.6	7/8"	0.15	5	50
1/4"	V2BF2	1/4" - 19 BSPP	steel		1.75	44.5	0.97	24.6	7/8"	0.14	5	50
1/4"	V2BF2-B	1/4" - 19 BSPP	brass		1.75	44.5	0.97	24.6	7/8"	0.14	5	50
1/4"	V2BF2-SS	1/4" - 19 BSPP	316 stainless		1.75	44.5	0.97	24.6	7/8"	0.14	5	50
1/4"	V2OF2	7/16" - 20 ORB	steel		1.75	44.5	0.97	24.6	7/8"	0.16	5	50
3/8"	V3F3	3/8" - 18 NPTF	steel		1.87	47.5	1.10	27.9	1"	0.23	5	50
3/8"	V3F3-B	3/8" - 18 NPTF	brass		1.87	47.5	1.10	27.9	1"	0.23	5	50
3/8"	V3F3-SS	3/8" - 18 NPTF	316 stainless		1.87	47.5	1.10	27.9	1"	0.23	5	50
3/8"	V3BF3	3/8" - 19 BSPP	steel		1.94	49.3	1.10	27.9	1"	0.23	5	50
3/8"	V3BF3-B	3/8" - 19 BSPP	brass		1.94	49.3	1.10	27.9	1"	0.23	5	50
3/8"	V3BF3-SS	3/8" - 19 BSPP	316 stainless		1.94	49.3	1.10	27.9	1"	0.23	5	50
3/8"	V3OF3	9/16" - 18 ORB	steel		1.94	49.3	1.10	27.9	1"	0.25	5	50
3/8"	V3F4	1/2" - 14 NPTF	steel		1.94	49.3	1.10	27.9	1"	0.27	5	50
1/2"	V4F4	1/2" - 14 NPTF	steel		1.99	50.5	1.31	33.3	1-3/16"	0.30	5	25
1/2"	V4F4-B	1/2" - 14 NPTF	brass		1.99	50.5	1.31	33.3	1-3/16"	0.30	5	25
1/2"	V4F4-SS	1/2" - 14 NPTF	316 stainless		1.99	50.5	1.31	33.3	1-3/16"	0.30	5	25
1/2"	V4BF4	1/2" - 14 BSPP	steel		1.99	50.5	1.31	33.3	1-3/16"	0.30	5	25
1/2"	V4BF4-B	1/2" - 14 BSPP	brass		1.99	50.5	1.31	33.3	1-3/16"	0.30	5	25
1/2"	V4BF4-SS	1/2" - 14 BSPP	316 stainless		1.99	50.5	1.31	33.3	1-3/16"	0.30	5	25
1/2"	V4OF4	3/4" - 16 ORB	steel		1.99	50.5	1.31	33.3	1-3/16"	0.33	5	25
1/2"	V4F6	3/4" - 14 NPTF	steel		1.99	50.5	1.31	33.3	1-3/16"	0.38	5	25
3/4"	V6F6	3/4" - 14 NPTF	steel		2.31	58.7	1.65	41.9	1-1/2"	0.60	5	20
3/4"	V6F6-B	3/4" - 14 NPTF	brass		2.31	58.7	1.65	41.9	1-1/2"	0.60	5	20
3/4"	V6F6-SS	3/4" - 14 NPTF	316 stainless		2.31	58.7	1.65	41.9	1-1/2"	0.59	5	20
3/4"	V6BF6	3/4" - 14 BSPP	steel		2.80	71.1	1.65	41.9	1-1/2"	0.60	5	20
3/4"	V6BF6-B	3/4" - 14 BSPP	brass		2.80	71.1	1.65	41.9	1-1/2"	0.60	5	20
3/4"	V6BF6-SS	3/4" - 14 BSPP	316 stainless		2.80	71.1	1.65	41.9	1-1/2"	0.61	5	20
3/4"	V6OF6	1-1/16" - 12 ORB	steel		2.80	71.1	1.65	41.9	1-1/2"	0.66	5	20
1"	V8F8	1" - 11 1/2 NPTF	steel		2.60	66.0	2.06	52.3	1-7/8"	0.93	-	10
1"	V8F8-B	1" - 11 1/2 NPTF	brass		2.60	66.0	2.06	52.3	1-7/8"	0.93	-	10
1"	V8F8-SS	1" - 11 1/2 NPTF	316 stainless		2.60	66.0	2.06	52.3	1-7/8"	0.94	-	10
1"	V8BF8	1" - 11 BSPP	steel		2.87	72.9	2.06	52.3	1-7/8"	0.93	-	10
1"	V8BF8-B	1" - 11 BSPP	brass		2.87	72.9	2.06	52.3	1-7/8"	0.94	-	10
1"	V8BF8-SS	1" - 11 BSPP	316 stainless		2.87	72.9	2.06	52.3	1-7/8"	0.93	-	10
1"	V8OF8	1-5/16" - 12 ORB	steel		2.857	72.6	2.06	52.3	1-7/8"	0.98	-	10

V-Series Hydraulic Couplings



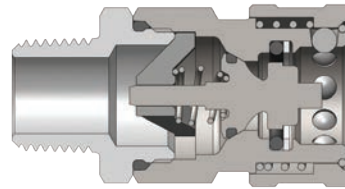
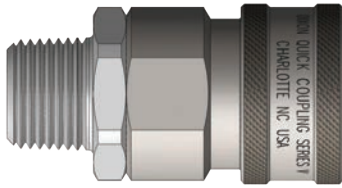
Body Size	V-Series Snap-Tite H/H Interchange Valved Coupler (Female Threads)											
	Part Detail				Length		Maximum OD		Hex Inch	Weight Lb	Package Qty	
	Part Number	Threads	Material		Inch	mm	Inch	mm			Bag	Box
1-1/4"	10VF10	1-1/4" - 11 1/2 NPTF	steel		3.54	89.9	2.19	55.6	2"	1.94	-	10
1-1/4"	10VF10-B	1-1/4" - 11 1/2 NPTF	brass		3.54	89.9	2.19	55.6	2"	1.94	-	10
1-1/4"	10VF10-SS	1-1/4" - 11 1/2 NPTF	316 stainless		3.54	89.9	2.19	55.6	2"	1.95	-	10
1-1/4"	10VBF10	1-1/4" - 11 BSPP	steel		3.54	89.9	2.19	55.6	2"	1.94	-	10
1-1/4"	10VBF10-B	1-1/4" - 11 BSPP	brass		3.54	89.9	2.19	55.6	2"	1.94	-	10
1-1/4"	10VBF10-SS	1-1/4" - 11 BSPP	316 stainless		3.54	89.9	2.19	55.6	2"	1.95	-	10
1-1/4"	10VOF10	1-5/8" - 12 ORB	steel		3.54	89.9	2.19	55.6	2"	1.92	-	10
1-1/2"	12VF12	1-1/2" - 11 1/2 NPTF	steel		3.27	83.1	2.74	69.6	2-1/2"	2.95	-	5
1-1/2"	12VF12-B	1-1/2" - 11 1/2 NPTF	brass		3.27	83.1	2.74	69.6	2-1/2"	2.95	-	5
1-1/2"	12VF12-SS	1-1/2" - 11 1/2 NPTF	316 stainless		3.27	83.1	2.74	69.6	2-1/2"	2.94	-	5
1-1/2"	12VBF12	1-1/2" - 11 BSPP	steel		3.27	83.1	2.74	69.6	2-1/2"	2.95	-	5
1-1/2"	12VBF12-B	1-1/2" - 11 BSPP	brass		3.27	83.1	2.74	69.6	2-1/2"	2.95	-	5
1-1/2"	12VBF12-SS	1-1/2" - 11 BSPP	316 stainless		3.27	83.1	2.74	69.6	2-1/2"	2.95	-	5
1-1/2"	12VOF12	1-7/8" - 12 ORB	steel		3.27	83.1	2.74	69.6	2-1/2"	3.01	-	5
2"	16VF16	2" - 11 1/2 NPTF	steel		3.92	99.6	3.83	97.3	3-1/2"	6.19	-	5
2"	16VF16-B	2" - 11 1/2 NPTF	brass		3.92	99.6	3.83	97.3	3-1/2"	6.19	-	5
2"	16VF16-SS	2" - 11 1/2 NPTF	316 stainless		3.92	99.6	3.83	97.3	3-1/2"	6.20	-	5
2"	16VBF16	2" - 11 BSPP	steel		3.92	99.6	3.83	97.3	3-1/2"	6.19	-	5
2"	16VBF16-B	2" - 11 BSPP	brass		3.92	99.6	3.83	97.3	3-1/2"	6.19	-	5
2"	16VBF16-SS	2" - 11 BSPP	316 stainless		3.92	99.6	3.83	97.3	3-1/2"	6.19	-	5

V-Series Hydraulic Couplings



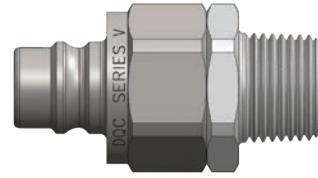
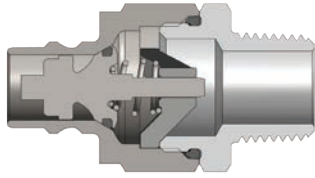
Body Size	V-Series Snap-Tite H/H Interchange Valved Nipple (Female Threads)											
	Part Detail				Length		Maximum OD		Hex Inch	Weight Lb	Package Qty	
	Part Number	Threads	Material		Inch	mm	Inch	mm			Bag	Box
1-1/4"	V10F10	1-1/4" - 11 1/2 NPTF	steel		3.41	86.6	2.19	55.6	2"	0.52	-	10
1-1/4"	V10F10-B	1-1/4" - 11 1/2 NPTF	brass		3.41	86.6	2.19	55.6	2"	0.52	-	10
1-1/4"	V10F10-SS	1-1/4" - 11 1/2 NPTF	316 stainless		3.41	86.6	2.19	55.6	2"	0.50	-	10
1-1/4"	V10BF10	1-1/4" - 11 BSPP	steel		3.41	86.6	2.19	55.6	2"	0.52	-	10
1-1/4"	V10BF10-B	1-1/4" - 11 BSPP	brass		3.41	86.6	2.19	55.6	2"	0.52	-	10
1-1/4"	V10BF10-SS	1-1/4" - 11 BSPP	316 stainless		3.41	86.6	2.19	55.6	2"	0.51	-	10
1-1/4"	V10OF10	1-5/8" - 12 ORB	steel		3.41	86.6	2.19	55.6	2"	0.59	-	10
1-1/2"	V12F12	1-1/2" - 11 1/2 NPTF	steel		3.11	79.0	2.74	69.6	2-1/2"	2.13	-	5
1-1/2"	V12F12-B	1-1/2" - 11 1/2 NPTF	brass		3.11	79.0	2.74	69.6	2-1/2"	2.13	-	5
1-1/2"	V12F12-SS	1-1/2" - 11 1/2 NPTF	316 stainless		3.11	79.0	2.74	69.6	2-1/2"	2.12	-	5
1-1/2"	V12BF12	1-1/2" - 11 BSPP	steel		3.11	79.0	2.74	69.6	2-1/2"	2.13	-	5
1-1/2"	V12BF12-B	1-1/2" - 11 BSPP	brass		3.11	79.0	2.74	69.6	2-1/2"	2.14	-	5
1-1/2"	V12BF12-SS	1-1/2" - 11 BSPP	316 stainless		3.11	79.0	2.74	69.6	2-1/2"	2.14	-	5
1-1/2"	V12OF12	1-7/8" - 12 ORB	steel		3.11	79.0	2.74	69.6	2-1/2"	2.21	-	5
2"	V16F16	2" - 11 1/2 NPTF	steel		3.72	94.5	3.83	97.3	3-1/2"	4.75	-	5
2"	V16F16-B	2" - 11 1/2 NPTF	brass		3.72	94.5	3.83	97.3	3-1/2"	4.75	-	5
2"	V16F16-SS	2" - 11 1/2 NPTF	316 stainless		3.72	94.5	3.83	97.3	3-1/2"	4.76	-	5
2"	V16BF16	2" - 11 BSPP	steel		3.72	94.5	3.83	97.3	3-1/2"	4.75	-	5
2"	V16BF16-B	2" - 11 BSPP	brass		3.72	94.5	3.83	97.3	3-1/2"	4.75	-	5
2"	V16BF16-SS	2" - 11 BSPP	316 stainless		3.72	94.5	3.83	97.3	3-1/2"	4.73	-	5

V-Series Hydraulic Couplings



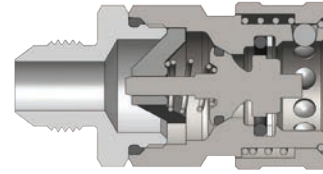
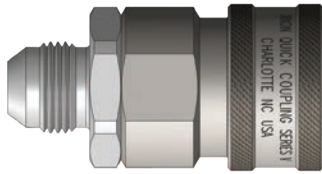
	Part Detail											
	Part Number	Threads	Material	Length		Maximum OD		Hex Inch	Weight Lb	Package Qty		
				Inch	mm	Inch	mm			Bag	Box	
	2VM1	1/8" - 27 NPTF	steel	2.12	53.8	0.99	25.1	7/8"	0.21	5	50	
	2VM2	1/4" - 18 NPTF	steel	2.12	53.8	0.99	25.1	7/8"	0.23	5	50	
	2VM2-B	1/4" - 18 NPTF	brass	2.12	53.8	0.99	25.1	7/8"	0.22	5	50	
	2VM2-SS	1/4" - 18 NPTF	316 stainless	2.12	53.8	0.99	25.1	7/8"	0.23	5	50	
	3VM3	3/8" - 18 NPTF	steel	2.32	58.9	1.18	30.0	1"	0.24	5	50	
	3VM3-B	3/8" - 18 NPTF	brass	2.32	58.9	1.18	30.0	1"	0.24	5	50	
	3VM3-SS	3/8" - 18 NPTF	316 stainless	2.32	58.9	1.18	30.0	1"	0.26	5	50	
	4VM4	1/2" - 14 NPTF	steel	2.54	64.5	1.36	34.5	1-3/16"	0.48	5	25	
	4VM4-B	1/2" - 14 NPTF	brass	2.54	64.5	1.36	34.5	1-3/16"	0.47	5	25	
	4VM4-SS	1/2" - 14 NPTF	316 stainless	2.54	64.5	1.36	34.5	1-3/16"	0.47	5	25	
	6VM6	3/4" - 14 NPTF	steel	3.07	78.0	1.67	42.4	1-1/2"	0.92	5	20	
	6VM6-B	3/4" - 14 NPTF	brass	3.07	78.0	1.67	42.4	1-1/2"	0.91	5	20	
	6VM6-SS	3/4" - 14 NPTF	316 stainless	3.07	78.0	1.67	42.4	1-1/2"	0.91	5	20	
	8VM8	1" - 11 1/2 NPTF	steel	3.32	84.3	2.06	52.3	1-7/8"	1.35	-	10	
	8VM8-B	1" - 11 1/2 NPTF	brass	3.32	84.3	2.06	52.3	1-7/8"	1.32	-	10	
	8VM8-SS	1" - 11 1/2 NPTF	316 stainless	3.32	84.3	2.06	52.3	1-7/8"	1.38	-	10	
	10VM10	1-1/4" - 11 1/2 NPTF	steel	3.59	91.2	2.19	55.6	2"	1.84	-	10	
	10VM10-B	1-1/4" - 11 1/2 NPTF	brass	3.59	91.2	2.19	55.6	2"	1.78	-	10	
	10VM10-SS	1-1/4" - 11 1/2 NPTF	316 stainless	3.59	91.2	2.19	55.6	2"	1.79	-	10	
	12VM12	1-1/2" - 11 1/2 NPTF	steel	4.01	101.9	2.74	69.6	2-1/2"	2.98	-	5	
	12VM12-B	1-1/2" - 11 1/2 NPTF	brass	4.01	101.9	2.74	69.6	2-1/2"	2.95	-	5	
	12VM12-SS	1-1/2" - 11 1/2 NPTF	316 stainless	4.01	101.9	2.74	69.6	2-1/2"	2.95	-	5	
	16VM16	2" - 11 1/2 NPTF	steel	4.54	115.3	3.83	97.3	3-1/2"	6.01	-	5	
	16VM16-B	2" - 11 1/2 NPTF	brass	4.54	115.3	3.83	97.3	3-1/2"	6.00	-	5	
	16VM16-SS	2" - 11 1/2 NPTF	316 stainless	4.54	115.3	3.83	97.3	3-1/2"	6.09	-	5	

V-Series Hydraulic Couplings

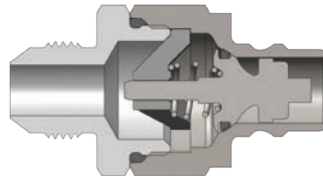
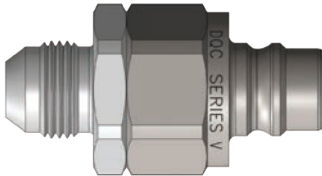


Body Size	V-Series Snap-Tite H/H Interchange Valved Nipple (Male Threads)											
	Part Detail				Length		Maximum OD		Hex Inch	Weight Lb	Package Qty	
	Part Number	Threads	Material		Inch	mm	Inch	mm			Bag	Box
1/4"	V2M1	1/8" - 27 NPTF	steel		2.06	52.3	0.97	24.6	7/8"	0.15	5	50
1/4"	V2M2	1/4" - 18 NPTF	steel		2.06	52.3	0.97	24.6	7/8"	0.16	5	50
1/4"	V2M2-B	1/4" - 18 NPTF	brass		2.06	52.3	0.97	24.6	7/8"	0.16	5	50
1/4"	V2M2-SS	1/4" - 18 NPTF	316 stainless		2.06	52.3	0.97	24.6	7/8"	0.16	5	50
3/8"	V3M3	3/8" - 18 NPTF	steel		2.25	57.2	1.10	27.9	1"	0.21	5	50
3/8"	V3M3-B	3/8" - 18 NPTF	brass		2.25	57.2	1.10	27.9	1"	0.21	5	50
3/8"	V3M3-SS	3/8" - 18 NPTF	316 stainless		2.25	57.2	1.10	27.9	1"	0.21	5	50
1/2"	V4M4	1/2" - 14 NPTF	steel		2.40	61.0	1.31	33.3	1-3/16"	0.31	5	25
1/2"	V4M4-B	1/2" - 14 NPTF	brass		2.40	61.0	1.31	33.3	1-3/16"	0.31	5	25
1/2"	V4M4-SS	1/2" - 14 NPTF	316 stainless		2.40	61.0	1.31	33.3	1-3/16"	0.33	5	25
3/4"	V6M6	3/4" - 14 NPTF	steel		2.91	73.9	1.65	41.9	1-1/2"	0.62	5	20
3/4"	V6M6-B	3/4" - 14 NPTF	brass		2.91	73.9	1.65	41.9	1-1/2"	0.62	5	20
3/4"	V6M6-SS	3/4" - 14 NPTF	316 stainless		2.91	73.9	1.65	41.9	1-1/2"	0.63	5	20
1"	V8M8	1" - 11 1/2 NPTF	steel		3.22	81.8	2.06	52.3	1-7/8"	1.09	-	10
1"	V8M8-B	1" - 11 1/2 NPTF	brass		3.22	81.8	2.06	52.3	1-7/8"	1.09	-	10
1"	V8M8-SS	1" - 11 1/2 NPTF	316 stainless		3.22	81.8	2.06	52.3	1-7/8"	1.15	-	10
1-1/4"	V10M10	1-1/4" - 11 1/2 NPTF	steel		3.46	87.9	2.19	55.6	2"	1.31	-	10
1-1/4"	V10M10-B	1-1/4" - 11 1/2 NPTF	brass		3.46	87.9	2.19	55.6	2"	1.31	-	10
1-1/4"	V10M10-SS	1-1/4" - 11 1/2 NPTF	316 stainless		3.46	87.9	2.19	55.6	2"	1.35	-	10
1-1/2"	V12M12	1-1/2" - 11 1/2 NPTF	steel		3.85	97.8	2.74	69.6	2-1/2"	2.27	-	5
1-1/2"	V12M12-B	1-1/2" - 11 1/2 NPTF	brass		3.85	97.8	2.74	69.6	2-1/2"	2.27	-	5
1-1/2"	V12M12-SS	1-1/2" - 11 1/2 NPTF	316 stainless		3.85	97.8	2.74	69.6	2-1/2"	2.35	-	5
2"	V16M16	2" - 11 1/2 NPTF	steel		4.34	110.2	3.83	97.3	3-1/2"	4.77	-	5
2"	V16M16-B	2" - 11 1/2 NPTF	brass		4.34	110.2	3.83	97.3	3-1/2"	4.77	-	5
2"	V16M16-SS	2" - 11 1/2 NPTF	316 stainless		4.34	110.2	3.83	97.3	3-1/2"	4.79	-	5

V-Series Hydraulic Couplings

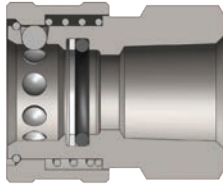


Body Size	V-Series Snap-Tite H/IH Interchange Valved Coupler (JIC Male Threads)											
	Part Detail				Length		Maximum OD		Hex Inch	Weight Lb	Package Qty	
	Part Number	Threads	Material		Inch	mm	Inch	mm			Bag	Box
1/4"	2VJM2	7/16" - 20 JIC	steel		2.12	53.8	0.99	25.1	7/8"	0.25	5	50
3/8"	3VJM3	9/16" - 18 JIC	steel		2.32	58.9	1.18	30.0	1"	0.30	5	50
1/2"	4VJM4	3/4" - 16 JIC	steel		2.54	64.5	1.36	34.5	1-3/16"	0.51	5	25
3/4"	6VJM6	1-1/16" - 12 JIC	steel		3.07	78.0	1.67	42.4	1-1/2"	0.98	5	20
1"	8VJM8	1-5/16" - 12 JIC	steel		3.32	84.3	2.06	52.3	1-7/8"	1.49	-	10
1-1/4"	10VJM10	1-5/8" - 12 JIC	steel		3.59	91.2	2.19	55.6	2"	1.98	-	10



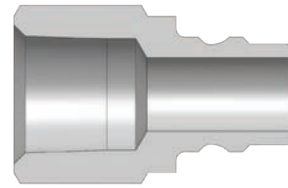
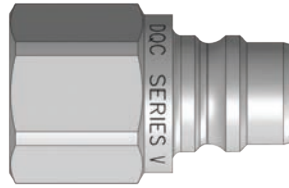
Body Size	V-Series Snap-Tite H/IH Interchange Valved Nipple (JIC Male Threads)											
	Part Detail				Length		Maximum OD		Hex Inch	Weight Lb	Package Qty	
	Part Number	Threads	Material		Inch	mm	Inch	mm			Bag	Box
1/4"	V2JM2	7/16" - 20 JIC	steel		2.06	52.3	0.97	24.6	7/8"	0.18	5	50
3/8"	V3JM3	9/16" - 18 JIC	steel		2.25	57.2	1.1	27.9	1"	0.25	5	50
1/2"	V4JM4	3/4" - 16 JIC	steel		2.40	61.0	1.31	33.3	1-3/16"	0.38	5	25
3/4"	V6JM6	1-1/16" - 12 JIC	steel		2.91	73.9	1.65	41.9	1-1/2"	0.72	5	20
1"	V8JM8	1-5/16" - 12 JIC	steel		3.22	81.8	2.06	52.3	1-7/8"	1.36	-	10
1-1/4"	V10JM10	1-5/8" - 12 JIC	steel		3.46	87.9	2.19	55.6	2"	1.46	-	10

V-Series Hydraulic Couplings



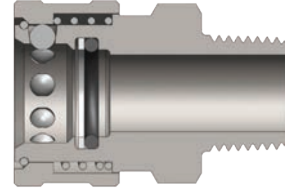
Body Size	V-Series Snap-Tite H/H Interchange Unvalved Coupler (Female Threads)											
	Part Detail				Length		Maximum OD		Hex Inch	Weight Lb	Package Qty	
	Part Number	Threads	Material		Inch	mm	Inch	mm			Bag	Box
1/4"	2VF2-E	1/4" - 18 NPTF	steel		1.36	34.5	0.99	25.1	7/8"	0.18	5	50
1/4"	2VF2-B-E	1/4" - 18 NPTF	brass		1.36	34.5	0.99	25.1	7/8"	0.18	5	50
1/4"	2VF2-SS-E	1/4" - 18 NPTF	316 stainless		1.36	34.5	0.99	25.1	7/8"	0.18	5	50
1/4"	2VBF2-E	1/4" - 19 BSPP	steel		1.36	34.5	0.99	25.1	7/8"	0.18	5	50
1/4"	2VBF2-B-E	1/4" - 19 BSPP	brass		1.36	34.5	0.99	25.1	7/8"	0.17	5	50
1/4"	2VBF2-SS-E	1/4" - 19 BSPP	316 stainless		1.36	34.5	0.99	25.1	7/8"	0.18	5	50
3/8"	3VF3-E	3/8" - 18 NPTF	steel		1.50	38.1	1.18	30.0	7/8"	0.28	5	50
3/8"	3VF3-B-E	3/8" - 18 NPTF	brass		1.50	38.1	1.18	30.0	7/8"	0.27	5	50
3/8"	3VF3-SS-E	3/8" - 18 NPTF	316 stainless		1.50	38.1	1.18	30.0	7/8"	0.29	5	50
3/8"	3VBF3-E	3/8" - 19 BSPP	steel		1.50	38.1	1.18	30.0	7/8"	0.27	5	50
3/8"	3VBF3-B-E	3/8" - 19 BSPP	brass		1.50	38.1	1.18	30.0	7/8"	0.26	5	50
3/8"	3VBF3-SS-E	3/8" - 19 BSPP	316 stainless		1.50	38.1	1.18	30.0	7/8"	0.29	5	50
1/2"	4VF4-E	1/2" - 14 NPTF	steel		1.64	41.7	1.37	34.8	1-3/16"	0.39	5	25
1/2"	4VF4-B-E	1/2" - 14 NPTF	brass		1.64	41.7	1.37	34.8	1-3/16"	0.39	5	25
1/2"	4VF4-SS-E	1/2" - 14 NPTF	316 stainless		1.64	41.7	1.37	34.8	1-3/16"	0.38	5	25
1/2"	4VBF4-E	1/2" - 14 BSPP	steel		1.64	41.7	1.37	34.8	1-3/16"	0.39	5	25
1/2"	4VBF4-B-E	1/2" - 14 BSPP	brass		1.64	41.7	1.37	34.8	1-3/16"	0.40	5	25
1/2"	4VBF4-SS-E	1/2" - 14 BSPP	316 stainless		1.64	41.7	1.37	34.8	1-3/16"	0.40	5	25
3/4"	6VF6-E	3/4" - 14 NPTF	steel		1.96	49.8	1.67	42.4	1-1/2"	0.64	5	20
3/4"	6VF6-B-E	3/4" - 14 NPTF	brass		1.96	49.8	1.67	42.4	1-1/2"	0.62	5	20
3/4"	6VF6-SS-E	3/4" - 14 NPTF	316 stainless		1.96	49.8	1.67	42.4	1-1/2"	0.61	5	20
3/4"	6VBF6-E	3/4" - 14 BSPP	steel		1.96	49.8	1.67	42.4	1-1/2"	0.64	5	20
3/4"	6VBF6-B-E	3/4" - 14 BSPP	brass		1.96	49.8	1.67	42.4	1-1/2"	0.63	5	20
3/4"	6VBF6-SS-E	3/4" - 14 BSPP	316 stainless		1.96	49.8	1.67	42.4	1-1/2"	0.64	5	20
1"	8VF8-E	1" - 11 1/2 NPTF	steel		2.10	53.3	1.99	50.5	1-13/16"	1.05	-	10
1"	8VF8-B-E	1" - 11 1/2 NPTF	brass		2.10	53.3	1.99	50.5	1-13/16"	1.02	-	10
1"	8VF8-SS-E	1" - 11 1/2 NPTF	316 stainless		2.10	53.3	1.99	50.5	1-13/16"	1.02	-	10
1"	8VBF8-E	1" - 11 BSPP	steel		2.10	53.3	1.99	50.5	1-13/16"	1.04	-	10
1"	8VBF8-B-E	1" - 11 BSPP	brass		2.10	53.3	1.99	50.5	1-13/16"	1.03	-	10
1"	8VBF8-SS-E	1" - 11 BSPP	316 stainless		2.10	53.3	1.99	50.5	1-13/16"	1.04	-	10
1-1/4"	10VF10-E	1-1/4" - 11 1/2 NPTF	steel		2.28	57.9	2.19	55.6	2"	1.08	-	10
1-1/4"	10VF10-B-E	1-1/4" - 11 1/2 NPTF	brass		2.28	57.9	2.19	55.6	2"	1.10	-	10
1-1/4"	10VF10-SS-E	1-1/4" - 11 1/2 NPTF	316 stainless		2.28	57.9	2.19	55.6	2"	1.10	-	10
1-1/4"	10VBF10-E	1-1/4" - 11 BSPP	steel		2.28	57.9	2.19	55.6	2"	1.10	-	10
1-1/4"	10VBF10-B-E	1-1/4" - 11 BSPP	brass		2.28	57.9	2.19	55.6	2"	1.09	-	10
1-1/4"	10VBF10-SS-E	1-1/4" - 11 BSPP	316 stainless		2.28	57.9	2.19	55.6	2"	1.10	-	10
1-1/2"	12VF12-E	1-1/2" - 11 1/2 NPTF	steel		2.57	65.3	2.74	69.6	2-1/2"	1.78	-	5
1-1/2"	12VF12-B-E	1-1/2" - 11 1/2 NPTF	brass		2.57	65.3	2.74	69.6	2-1/2"	1.78	-	5
1-1/2"	12VF12-SS-E	1-1/2" - 11 1/2 NPTF	316 stainless		2.57	65.3	2.74	69.6	2-1/2"	1.78	-	5
2"	16VF16-E	2" - 11 1/2 NPTF	steel		2.48	63.0	3.56	90.4	3-1/4"	3.12	-	5
2"	16VF16-B-E	2" - 11 1/2 NPTF	brass		2.48	63.0	3.56	90.4	3-1/4"	3.13	-	5
2"	16VF16-SS-E	2" - 11 1/2 NPTF	316 stainless		2.48	63.0	3.56	90.4	3-1/4"	3.13	-	5

V-Series Hydraulic Couplings



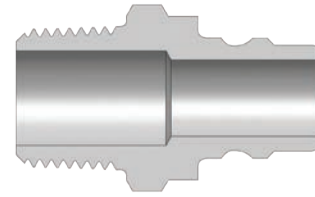
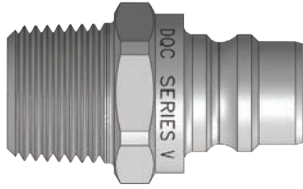
Body Size	V-Series Snap-Tite H/H Interchange Unvalved Nipple (Female Threads)											
	Part Detail			Length		Maximum OD		Hex Inch	Weight Lb	Package Qty		
	Part Number	Threads	Material	Inch	mm	Inch	mm			Bag	Box	
1/4"	V2F2-E	1/4" - 18 NPTF	steel	1.27	32.3	0.69	17.5	5/8"	0.05	5	50	
1/4"	V2F2-B-E	1/4" - 18 NPTF	brass	1.27	32.3	0.69	17.5	5/8"	0.06	5	50	
1/4"	V2F2-SS-E	1/4" - 18 NPTF	316 stainless	1.27	32.3	0.69	17.5	5/8"	0.06	5	50	
1/4"	V2BF2-E	1/4" - 19 BSPP	steel	1.27	32.3	0.69	17.5	5/8"	0.06	5	50	
1/4"	V2BF2-B-E	1/4" - 19 BSPP	brass	1.27	32.3	0.69	17.5	5/8"	0.06	5	50	
1/4"	V2BF2-SS-E	1/4" - 19 BSPP	316 stainless	1.27	32.3	0.69	17.5	5/8"	0.05	5	50	
3/8"	V3F3-E	3/8" - 18 NPTF	steel	1.41	35.8	0.90	22.9	13/16"	0.08	5	50	
3/8"	V3F3-B-E	3/8" - 18 NPTF	brass	1.41	35.8	0.90	22.9	13/16"	0.08	5	50	
3/8"	V3F3-SS-E	3/8" - 18 NPTF	316 stainless	1.41	35.8	0.90	22.9	13/16"	0.08	5	50	
3/8"	V3BF3-E	3/8" - 19 BSPP	steel	1.41	35.8	0.90	22.9	13/16"	0.07	5	50	
3/8"	V3BF3-B-E	3/8" - 19 BSPP	brass	1.41	35.8	0.90	22.9	13/16"	0.08	5	50	
3/8"	V3BF3-SS-E	3/8" - 19 BSPP	316 stainless	1.41	35.8	0.90	22.9	13/16"	0.07	5	50	
1/2"	V4F4-E	1/2" - 14 NPTF	steel	1.72	43.7	1.10	27.9	1"	0.18	5	25	
1/2"	V4F4-B-E	1/2" - 14 NPTF	brass	1.72	43.7	1.10	27.9	1"	0.18	5	25	
1/2"	V4F4-SS-E	1/2" - 14 NPTF	316 stainless	1.72	43.7	1.10	27.9	1"	0.18	5	25	
1/2"	V4BF4-E	1/2" - 14 BSPP	steel	1.72	43.7	1.10	27.9	1"	0.17	5	25	
1/2"	V4BF4-B-E	1/2" - 14 BSPP	brass	1.72	43.7	1.10	27.9	1"	0.17	5	25	
1/2"	V4BF4-SS-E	1/2" - 14 BSPP	316 stainless	1.72	43.7	1.10	27.9	1"	0.16	5	25	
3/4"	V6F6-E	3/4" - 14 NPTF	steel	1.86	47.2	1.31	33.3	1-3/16"	0.22	5	20	
3/4"	V6F6-B-E	3/4" - 14 NPTF	brass	1.86	47.2	1.31	33.3	1-3/16"	0.22	5	20	
3/4"	V6F6-SS-E	3/4" - 14 NPTF	316 stainless	1.86	47.2	1.31	33.3	1-3/16"	0.22	5	20	
3/4"	V6BF6-E	3/4" - 14 BSPP	steel	1.86	47.2	1.31	33.3	1-3/16"	0.23	5	20	
3/4"	V6BF6-B-E	3/4" - 14 BSPP	brass	1.86	47.2	1.31	33.3	1-3/16"	0.22	5	20	
3/4"	V6BF6-SS-E	3/4" - 14 BSPP	316 stainless	1.86	47.2	1.31	33.3	1-3/16"	0.22	5	20	
1"	V8F8-E	1" - 11 1/2 NPTF	steel	2.08	52.8	1.65	41.9	1-1/2"	0.38	-	10	
1"	V8F8-B-E	1" - 11 1/2 NPTF	brass	2.08	52.8	1.65	41.9	1-1/2"	0.38	-	10	
1"	V8F8-SS-E	1" - 11 1/2 NPTF	316 stainless	2.08	52.8	1.65	41.9	1-1/2"	0.38	-	10	
1"	V8BF8-E	1" - 11 BSPP	steel	2.08	52.8	1.65	41.9	1-1/2"	0.38	-	10	
1"	V8BF8-B-E	1" - 11 BSPP	brass	2.08	52.8	1.65	41.9	1-1/2"	0.38	-	10	
1"	V8BF8-SS-E	1" - 11 BSPP	316 stainless	2.08	52.8	1.65	41.9	1-1/2"	0.38	-	10	
1-1/4"	V10F10-E	1-1/4" - 11 1/2 NPTF	steel	2.22	56.4	2.06	52.3	1-7/8"	0.57	-	10	
1-1/4"	V10F10-B-E	1-1/4" - 11 1/2 NPTF	brass	2.22	56.4	2.06	52.3	1-7/8"	0.56	-	10	
1-1/4"	V10F10-SS-E	1-1/4" - 11 1/2 NPTF	316 stainless	2.22	56.4	2.06	52.3	1-7/8"	0.56	-	10	
1-1/4"	V10BF10-E	1-1/4" - 11 BSPP	steel	2.22	56.4	2.06	52.3	1-7/8"	0.57	-	10	
1-1/4"	V10BF10-B-E	1-1/4" - 11 BSPP	brass	2.22	56.4	2.06	52.3	1-7/8"	0.55	-	10	
1-1/4"	V10BF10-SS-E	1-1/4" - 11 BSPP	316 stainless	2.22	56.4	2.06	52.3	1-7/8"	0.55	-	10	
1-1/2"	V12F12-E	1-1/2" - 11 1/2 NPTF	steel	2.44	62.0	2.33	59.2	2-1/8"	0.84	-	5	
1-1/2"	V12F12-B-E	1-1/2" - 11 1/2 NPTF	brass	2.44	62.0	2.33	59.2	2-1/8"	0.84	-	5	
1-1/2"	V12F12-SS-E	1-1/2" - 11 1/2 NPTF	316 stainless	2.44	62.0	2.33	59.2	2-1/8"	0.83	-	5	
2"	V16F16-E	2" - 11 1/2 NPTF	steel	2.60	66.0	3.01	76.5	2-3/4"	1.34	-	5	
2"	V16F16-B-E	2" - 11 1/2 NPTF	brass	2.60	66.0	3.01	76.5	2-3/4"	1.34	-	5	
2"	V16F16-SS-E	2" - 11 1/2 NPTF	316 stainless	2.60	66.0	3.01	76.5	2-3/4"	1.35	-	5	

V-Series Hydraulic Couplings



Body Size	V-Series Snap-Tite H/IH Interchange Unvalved Coupler (Male Threads)											
	Part Detail			Length		Maximum OD		Hex Inch	Weight Lb	Package Qty		
	Part Number	Threads	Material	Inch	mm	Inch	mm			Bag	Box	
1/4"	2VM2-E	1/4" - 18 NPTF	steel	1.82	46.2	0.99	25.1	5/8"	0.19	5	50	
1/4"	2VM2-B-E	1/4" - 18 NPTF	brass	1.82	46.2	0.99	25.1	5/8"	0.19	5	50	
1/4"	2VM2-SS-E	1/4" - 18 NPTF	316 stainless	1.82	46.2	0.99	25.1	5/8"	0.19	5	50	
3/8"	3VM3-E	3/8" - 18 NPTF	steel	1.76	44.7	1.18	30.0	13-16"	0.28	5	50	
3/8"	3VM3-B-E	3/8" - 18 NPTF	brass	1.76	44.7	1.18	30.0	13/16"	0.28	5	50	
3/8"	3VM3-SS-E	3/8" - 18 NPTF	316 stainless	1.76	44.7	1.18	30.0	13/16"	0.29	5	50	
1/2"	4VM4-E	1/2" - 14 NPTF	steel	2.03	51.6	1.37	34.8	1"	0.38	5	25	
1/2"	4VM4-B-E	1/2" - 14 NPTF	brass	2.03	51.6	1.37	34.8	1"	0.36	5	25	
1/2"	4VM4-SS-E	1/2" - 14 NPTF	316 stainless	2.03	51.6	1.37	34.8	1"	0.38	5	25	
3/4"	6VM6-E	3/4" - 14 NPTF	steel	2.29	58.2	1.67	42.4	1-3/16"	0.62	5	20	
3/4"	6VM6-B-E	3/4" - 14 NPTF	brass	2.29	58.2	1.67	42.4	1-3/16"	0.62	5	20	
3/4"	6VM6-SS-E	3/4" - 14 NPTF	316 stainless	2.29	58.2	1.67	42.4	1-3/16"	0.60	5	20	
1"	8VM8-E	1" - 11 1/2 NPTF	steel	2.39	60.7	1.99	50.5	1-1/2"	0.88	-	10	
1"	8VM8-B-E	1" - 11 1/2 NPTF	brass	2.39	60.7	1.99	50.5	1-1/2"	0.90	-	10	
1"	8VM8-SS-E	1" - 11 1/2 NPTF	316 stainless	2.39	60.7	1.99	50.5	1-1/2"	0.89	-	10	
1-1/4"	10VM10-E	1-1/4" - 11 1/2 NPTF	steel	2.78	70.6	2.19	55.6	1-7/8"	1.20	-	10	
1-1/4"	10VM10-SS-E	1-1/4" - 11 1/2 NPTF	316 stainless	2.78	70.6	2.19	55.6	1-7/8"	1.20	-	10	
1-1/2"	12VM12-E	1-1/2" - 11 1/2 NPTF	steel	3.08	78.2	2.74	69.6	2-1/8"	2.08	-	5	
1-1/2"	12VM12-SS-E	1-1/2" - 11 1/2 NPTF	316 stainless	3.08	78.2	2.74	69.6	2-1/8"	2.08	-	5	
2"	16VM16-E	2" - 11 1/2 NPTF	steel	3.10	78.7	3.56	90.4	2-1/2"	3.73	-	5	
2"	16VM16-SS-E	2" - 11 1/2 NPTF	316 stainless	3.10	78.7	3.56	90.4	2-1/2"	3.73	-	5	

V-Series Hydraulic Couplings

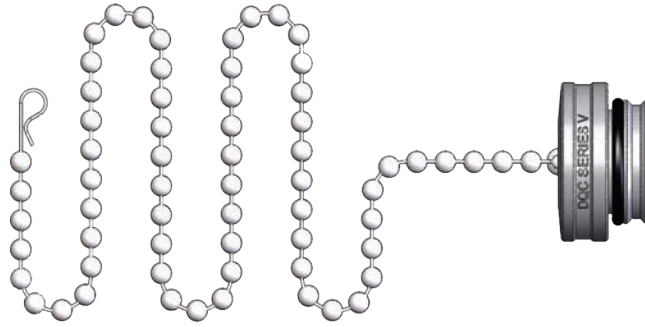


Body Size	V-Series Snap-Tite H/IH Interchange Unvalved Nipple (Male Threads)											
	Part Detail				Length		Maximum OD		Hex Inch	Weight Lb	Package Qty	
	Part Number	Threads	Material		Inch	mm	Inch	mm			Bag	Box
1/4"	V2M2-E	1/4" - 18 NPTF	steel		1.52	38.6	0.69	17.5	5/8"	0.16	5	50
1/4"	V2M2-B-E	1/4" - 18 NPTF	brass		1.52	38.6	0.69	17.5	5/8"	0.16	5	50
1/4"	V2M2-SS-E	1/4" - 18 NPTF	316 stainless		1.52	38.6	0.69	17.5	5/8"	0.16	5	50
3/8"	V3M3-E	3/8" - 18 NPTF	steel		1.72	43.7	0.90	22.9	13/16"	0.11	5	50
3/8"	V3M3-B-E	3/8" - 18 NPTF	brass		1.72	43.7	0.90	22.9	13/16"	0.11	5	50
3/8"	V3M3-SS-E	3/8" - 18 NPTF	316 stainless		1.72	43.7	0.90	22.9	13/16"	0.11	5	50
1/2"	V4M4-E	1/2" - 14 NPTF	steel		1.80	45.7	1.10	27.9	1"	0.15	5	25
1/2"	V4M4-B-E	1/2" - 14 NPTF	brass		1.80	45.7	1.10	27.9	1"	0.15	5	25
1/2"	V4M4-SS-E	1/2" - 14 NPTF	316 stainless		1.80	45.7	1.10	27.9	1"	0.15	5	25
3/4"	V6M6-E	3/4" - 14 NPTF	steel		2.19	55.6	1.31	33.3	1-3/16"	0.30	5	20
3/4"	V6M6-B-E	3/4" - 14 NPTF	brass		2.19	55.6	1.31	33.3	1-3/16"	0.28	5	20
3/4"	V6M6-SS-E	3/4" - 14 NPTF	316 stainless		2.19	55.6	1.31	33.3	1-3/16"	0.28	5	20
1"	V8M8-E	1" - 11 1/2 NPTF	steel		2.31	58.7	1.65	41.9	1-1/2"	0.40	-	10
1"	V8M8-B-E	1" - 11 1/2 NPTF	brass		2.31	58.7	1.65	41.9	1-1/2"	0.40	-	10
1"	V8M8-SS-E	1" - 11 1/2 NPTF	316 stainless		2.31	58.7	1.65	41.9	1-1/2"	0.40	-	10
1-1/4"	V10M10-E	1-1/4" - 11 1/2 NPTF	steel		2.14	54.4	2.06	52.3	1-7/8"	0.83	-	10
1-1/4"	V10M10-SS-E	1-1/4" - 11 1/2 NPTF	316 stainless		2.14	54.4	2.06	52.3	1-7/8"	0.83	-	10
1-1/2"	V12M12-E	1-1/2" - 11 1/2 NPTF	steel		2.34	59.4	2.33	59.2	2-1/8"	1.08	-	5
1-1/2"	V12M12-SS-E	1-1/2" - 11 1/2 NPTF	316 stainless		2.34	59.4	2.33	59.2	2-1/8"	1.07	-	5
2"	V16M16-E	2" - 11 1/2 NPTF	steel		3.06	77.7	2.74	69.6	2-1/2"	1.44	-	5
2"	V16M16-SS-E	2" - 11 1/2 NPTF	316 stainless		3.06	77.7	2.74	69.6	2-1/2"	1.44	-	5

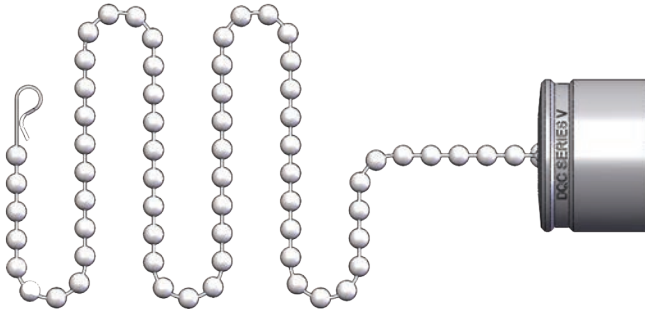


Body Size	V-Series Dust Caps and Dust Plugs					
	Part Detail			List Price	Package Qty	
	Coupler Dust Plug	Nipple Dust Cap	Material		Bag	Box
1/4"	1HDP	V2DC	Nitrile		10	50
3/8"	3VDP-V3DC	3VDP-V3DC	Nitrile		10	50
1/2"	3KDP-K3DC	3KDP-K3DC	Nitrile		10	50
3/4"	6VDP-V6DC	6VDP-V6DC	Nitrile		5	25
1"	8VDP-V8DC	8VDP-V8DC	Nitrile		5	25

V-Series Hydraulic Couplings



Body Size	V-Series Coupler Rigid Dust Plug						
	Part Detail			Weight Lb	Package Qty		
	Part Number	Lanyard	Body		Bag	Box	
1/4"	2VDP-A	SS Bead Chain	aluminum	0.02	5	50	
3/8"	3VDP-A	SS Bead Chain	aluminum	0.02	5	50	
1/2"	4VDP-A	SS Bead Chain	aluminum	0.03	5	25	
3/4"	6VDP-A	SS Bead Chain	aluminum	0.09	5	20	
1"	8VDP-A	SS Bead Chain	aluminum	0.14	-	10	
1-1/4"	10VDP-A	SS Bead Chain	aluminum	0.29	-	10	
1-1/2"	12VDP-A	SS Bead Chain	aluminum	0.31	-	10	
2"	16VDP-A	SS Bead Chain	aluminum	0.49	-	10	



Body Size	V-Series Nipple Rigid Dust Cap						
	Part Detail			Weight Lb	Package Qty		
	Part Number	Lanyard	Body		Bag	Box	
1/4"	V2DC-A	SS Bead Chain	aluminum	0.03	5	50	
3/8"	V3DC-A	SS Bead Chain	aluminum	0.07	5	50	
1/2"	V4DC-A	SS Bead Chain	aluminum	0.13	5	25	
3/4"	V6DC-A	SS Bead Chain	aluminum	0.19	5	20	
1"	V8DC-A	SS Bead Chain	aluminum	0.26	-	10	
1-1/4"	V10DC-A	SS Bead Chain	aluminum	0.25	-	10	
1-1/2"	V12DC-A	SS Bead Chain	aluminum	0.37	-	10	
2"	V16DC-A	SS Bead Chain	aluminum	0.52	-	10	

V-Series Hydraulic Couplings

V-Series Snap-Tite H/H Interchange Coupler Seal Kits							
Body Size	<i>Part Detail</i>				<i>Seal Kit Contents</i>	<i>Package Qty</i>	
	<i>Part Number</i>	<i>Coupler Style</i>	<i>Seal Material</i>			<i>Bag</i>	<i>Box</i>
1/4"	2V-SKIT	all	Nitrile		Body/Adapter O-Rings and PTFE Back-up	25	200
1/4"	F-2V-SKIT	all	Viton®		Body/Adapter O-Rings and PTFE Back-up	25	200
1/4"	P-2V-SKIT	all	EPDM		Body/Adapter O-Rings and PTFE Back-up	25	200
3/8"	3V-SKIT	all	Nitrile		Body/Adapter O-Rings and PTFE Back-up	25	200
3/8"	F-3V-SKIT	all	Viton®		Body/Adapter O-Rings and PTFE Back-up	25	200
3/8"	P-3V-SKIT	all	EPDM		Body/Adapter O-Rings and PTFE Back-up	25	200
1/2"	4V-SKIT	all	Nitrile		Body/Adapter O-Rings and PTFE Back-up	25	200
1/2"	F-4V-SKIT	all	Viton®		Body/Adapter O-Rings and PTFE Back-up	25	200
1/2"	P-4V-SKIT	all	EPDM		Body/Adapter O-Rings and PTFE Back-up	25	200
3/4"	6V-SKIT	all	Nitrile		Body/Adapter O-Rings and PTFE Back-up	25	200
3/4"	F-6V-SKIT	all	Viton®		Body/Adapter O-Rings and PTFE Back-up	25	200
3/4"	P-6V-SKIT	all	EPDM		Body/Adapter O-Rings and PTFE Back-up	25	200
1"	8V-SKIT	all	Nitrile		Body/Adapter O-Rings and PTFE Back-up	25	200
1"	F-8V-SKIT	all	Viton®		Body/Adapter O-Rings and PTFE Back-up	25	200
1"	P-8V-SKIT	all	EPDM		Body/Adapter O-Rings and PTFE Back-up	25	200
1-1/4"	10V-SKIT	all	Nitrile		Body/Adapter/Valve O-Rings and Back-up	10	50
1-1/4"	F-10V-SKIT	all	Viton®		Body/Adapter/Valve O-Rings and Back-up	10	50
1-1/4"	P-10V-SKIT	all	EPDM		Body/Adapter/Valve O-Rings and Back-up	10	50
1-1/2"	12V-SKIT	all	Nitrile		Body/Adapter/Valve O-Rings and Back-up	10	50
1-1/2"	F-12V-SKIT	all	Viton®		Body/Adapter/Valve O-Rings and Back-up	10	50
1-1/2"	P-12V-SKIT	all	EPDM		Body/Adapter/Valve O-Rings and Back-up	10	50
2"	16V-SKIT	all	Nitrile		Body/Adapter/Valve O-Rings and Back-up	10	50
2"	F-16V-SKIT	all	Viton®		Body/Adapter/Valve O-Rings and Back-up	10	50
2"	P-16V-SKIT	all	EPDM		Body/Adapter/Valve O-Rings and Back-up	10	50

V-Series Hydraulic Couplings

V-Series Snap-Tite H/IH Interchange Coupler Repair Kits							
Body Size	Part Detail			Repair Kit Contents (for one coupler)	Package Qty		
	Part Number	Coupler Style	Seal Material		Bag	Box	
1/4"	2V-RKIT	steel	Nitrile	Steel Valve Assembly and Adapter O-Ring	1	25	
1/4"	2V-BRKIT	brass	Nitrile	Brass Valve Assembly and Adapter O-Ring	1	25	
1/4"	2V-SSRKIT	316 stainless	Nitrile	316 SS Valve Assembly and Adapter O-Ring	1	25	
3/8"	3V-RKIT	steel	Nitrile	Steel Valve Assembly and Adapter O-Ring	1	25	
3/8"	3V-BRKIT	brass	Nitrile	Brass Valve Assembly and Adapter O-Ring	1	25	
3/8"	3V-SSRKIT	316 stainless	Nitrile	316 SS Valve Assembly and Adapter O-Ring	1	25	
1/2"	4V-RKIT	steel	Nitrile	Steel Valve Assembly and Adapter O-Ring	1	25	
1/2"	4V-BRKIT	brass	Nitrile	Brass Valve Assembly and Adapter O-Ring	1	25	
1/2"	4V-SSRKIT	316 stainless	Nitrile	316 SS Valve Assembly and Adapter O-Ring	1	25	
3/4"	6V-RKIT	steel	Nitrile	Steel Valve Assembly and Adapter O-Ring	1	25	
3/4"	6V-BRKIT	brass	Nitrile	Brass Valve Assembly and Adapter O-Ring	1	25	
3/4"	6V-SSRKIT	316 stainless	Nitrile	316 SS Valve Assembly and Adapter O-Ring	1	25	
1"	8V-RKIT	steel	Nitrile	Steel Valve Assembly and Adapter O-Ring	1	25	
1"	8V-BRKIT	brass	Nitrile	Brass Valve Assembly and Adapter O-Ring	1	25	
1"	8V-SSRKIT	316 stainless	Nitrile	316 SS Valve Assembly and Adapter O-Ring	1	25	
1-1/4"	140030-10	steel	Nitrile	Steel Valve Assembly and Adapter O-Ring	1	25	
1-1/4"	140032-10	316 stainless	Nitrile	316 SS Valve Assembly and Adapter O-Ring	1	25	
1-1/2"	140030-12	steel	Nitrile	Steel Valve Assembly and Adapter O-Ring	1	25	
1-1/2"	140032-12	316 stainless	Nitrile	316 SS Valve Assembly and Adapter O-Ring	1	25	
2"	140030-16	steel	Nitrile	Steel Valve Assembly and Adapter O-Ring	1	25	
2"	140032-16	316 stainless	Nitrile	316 SS Valve Assembly and Adapter O-Ring	1	25	

V-Series Snap-Tite H/IH Interchange Nipple Repair Kits							
Body Size	Part Detail			Repair Kit Contents (for one nipple)	Package Qty		
	Part Number	Coupler Style	Seal Material		Bag	Box	
1/4"	V2-RKIT	steel	Nitrile	Steel Valve Assembly and Adapter O-Ring	1	25	
1/4"	V2-BRKIT	brass	Nitrile	Brass Valve Assembly and Adapter O-Ring	1	25	
1/4"	V2-SSRKIT	316 stainless	Nitrile	316 SS Valve Assembly and Adapter O-Ring	1	25	
3/8"	V3-RKIT	steel	Nitrile	Steel Valve Assembly and Adapter O-Ring	1	25	
3/8"	V3-BRKIT	brass	Nitrile	Brass Valve Assembly and Adapter O-Ring	1	25	
3/8"	V3-SSRKIT	316 stainless	Nitrile	316 SS Valve Assembly and Adapter O-Ring	1	25	
1/2"	V4-RKIT	steel	Nitrile	Steel Valve Assembly and Adapter O-Ring	1	25	
1/2"	V4-BRKIT	brass	Nitrile	Brass Valve Assembly and Adapter O-Ring	1	25	
1/2"	V4-SSRKIT	316 stainless	Nitrile	316 SS Valve Assembly and Adapter O-Ring	1	25	
3/4"	V6-RKIT	steel	Nitrile	Steel Valve Assembly and Adapter O-Ring	1	25	
3/4"	V6-BRKIT	brass	Nitrile	Brass Valve Assembly and Adapter O-Ring	1	25	
3/4"	V6-SSRKIT	316 stainless	Nitrile	316 SS Valve Assembly and Adapter O-Ring	1	25	
1"	V8-RKIT	steel	Nitrile	Steel Valve Assembly and Adapter O-Ring	1	25	
1"	V8-BRKIT	brass	Nitrile	Brass Valve Assembly and Adapter O-Ring	1	25	
1"	V8-SSRKIT	316 stainless	Nitrile	316 SS Valve Assembly and Adapter O-Ring	1	25	
1-1/4"	140030-10	steel	Nitrile	Steel Valve Assembly and Adapter O-Ring	1	25	
1-1/4"	140032-10	316 stainless	Nitrile	316 SS Valve Assembly and Adapter O-Ring	1	25	
1-1/2"	140030-12	steel	Nitrile	Steel Valve Assembly and Adapter O-Ring	1	25	
1-1/2"	140032-12	316 stainless	Nitrile	316 SS Valve Assembly and Adapter O-Ring	1	25	
2"	140030-16	steel	Nitrile	Steel Valve Assembly and Adapter O-Ring	1	25	
2"	140032-16	316 stainless	Nitrile	316 SS Valve Assembly and Adapter O-Ring	1	25	