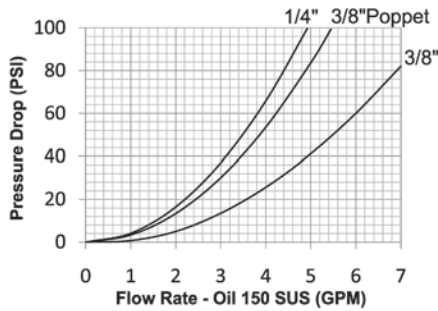


# T-Series Hydraulic Couplings

## Interchange Data:

- High Pressure Screw-Together Interchange
- Parker/Pioneer 3000-Series, Enerpac C604, Stucchi IVHP
- Hansen WS56000, Snap-Tite 76-Series, DNP PVM



## Materials:

- Machined components are manufactured using solid steel or 316 stainless steel bar stock.
- Chrome steel ball valve is mechanically seated to improve low pressure sealing performance.
- Steel nipples are machined from solid high strength steel bar stock.
- Steel componentry is plated using ROHS Compliant Trivalent Chrome.

## Seal Components:

- Urethane seal is standard in ball valve couplers and provides resistance to extrusion when subjected to high pressure - temperature range -40°F to +180°F (-40°C to +82°C).
- Nitrile seals are standard in poppet valve couplings, providing a temperature range of -40°F to +250°F (-40°C to +121°C).

## Rated Pressure Chart:

Body Size	T-Series High Pressure Enerpac Interchange (Connected)															
	Steel Ball Coupler/Plug				316 SS Ball Coupler/Plug				Steel Poppet Coupler/Plug				316 SS Poppet Coupler/Plug			
	Max. Working		Burst		Max. Working		Burst		Max. Working		Burst		Max. Working		Burst	
	PSI	Bar	PSI	Bar	PSI	Bar	PSI	Bar	PSI	Bar	PSI	Bar	PSI	Bar	PSI	Bar
1/4"	10,000	700	34,300	2,350	-	-	-	-	-	-	-	-	-	-	-	-
3/8"	10,000	700	30,000	2,050	10,000	700	30,900	2,100	10,000	700	36,800	2,500	10,000	700	36,500	2,500

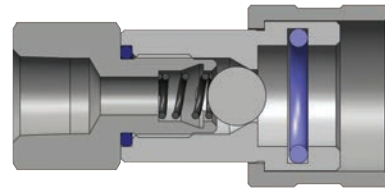
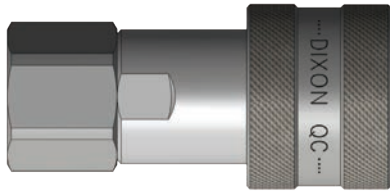
## Technical Specifications:

Body Size	Interchange Standards				Functional Parameters				
	U.S. Military	U.S. Government	International Standards	ANSI/NFPA Standards	Valve Style	Air Inclusion	Fluid Loss	Vacuum Inch HG	Flow ΔP = 60 PSI
1/4"	-	-	-	-	Ball	0.97	0.56	N/R	3.8 GPM
3/8"	-	-	-	-	Ball	2.04	0.98	N/R	4.2 GPM
3/8"	-	-	-	-	Poppet	1.56	0.77	N/R	6 GPM

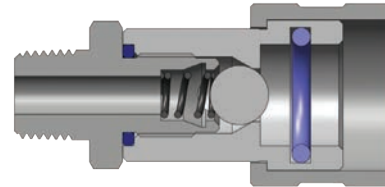
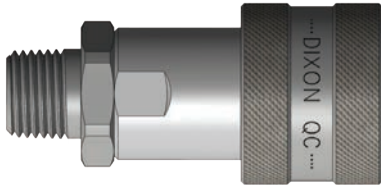
## List Price Seal Option Adders:

Body Size	Seal Options				Kalrez® Seal Options						Valve Options				Treatments	
	Viton®		Mil-Nitrile		4079		6375		7075		Unvalved		316 SS		Oxy-Clean	
	Pre	Add \$	Pre	Add \$	Pre	Add \$	Pre	Add \$	Pre	Add \$	Suf	Add \$	Suf	Add \$	Suf	Add \$
1/4"	F-	\$0.00	M-	\$0.00	K4-	POR	K6-	POR	K7-	POR	-E	-\$3.00	SSV	N/A	-C1	\$12.00
3/8"	F-	0.00	M-	0.00	K4-	POR	K6-	POR	K7-	POR	-E	-4.40	SSV	N/A	-C1	12.00

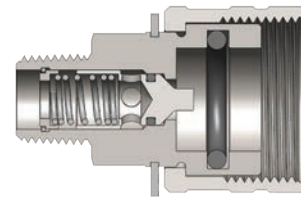
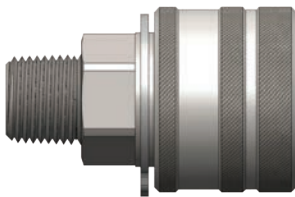
## T-Series Hydraulic Couplings



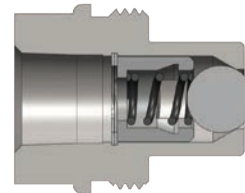
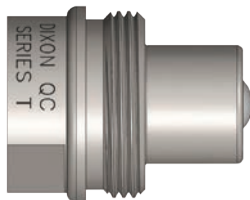
Body Size	T-Series High Pressure Ball Interchange Coupler (Female Threads)											
	Part Detail				Length		Maximum OD		Hex Inch	Weight Lb	Package Qty	
	Part Number	Threads	Material		Inch	mm	Inch	mm			Bag	Box
3/8"	3TF3	3/8" - 18 NPTF	steel		2.83	71.9	1.39	35.3	1"	0.49	5	25



Body Size	T-Series High Pressure Ball Interchange Coupler (Male Threads)											
	Part Detail				Length		Maximum OD		Hex Inch	Weight Lb	Package Qty	
	Part Number	Threads	Material		Inch	mm	Inch	mm			Bag	Box
1/4"	2TM2	1/4" - 18 NPTF	steel		2.36	59.9	1.14	29.0	13/16"	0.25	5	50
3/8"	3TM3	3/8" - 18 NPTF	steel		2.58	65.6	1.39	35.3	1"	0.49	5	25
3/8"	3TM3-SS	3/8" - 18 NPT	316 stainless		2.83	71.9	1.39	35.3	1"	0.49	5	25

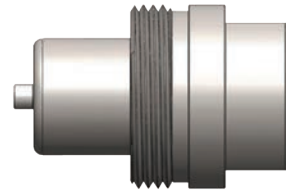
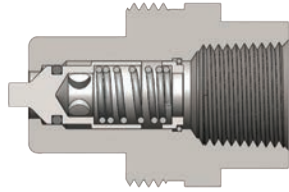


Body Size	T-Series High Pressure Poppet Interchange Coupler (Male Threads)											
	Part Detail				Length		Maximum OD		Hex Inch	Weight Lb	Package Qty	
	Part Number	Threads	Material		Inch	mm	Inch	mm			Bag	Box
3/8"	3TM3-PV	3/8" - 18 NPT	steel		2.78	70.7	1.36	34.5	1"	0.49	5	25
3/8"	3TM3-SS-PV	3/8" - 18 NPT	316 stainless		2.78	70.7	1.36	34.5	1"	0.49	5	25



Body Size	T-Series High Pressure Ball Interchange Nipple (Female Threads)											
	Part Detail				Length		Maximum OD		Hex Inch	Weight Lb	Package Qty	
	Part Number	Threads	Material		Inch	mm	Inch	mm			Bag	Box
1/4"	T2F2	1/4" - 18 NPTF	steel		1.30	33.0	1.12	28.5	3/4"	0.14	5	50
3/8"	T3F3	3/8" - 18 NPTF	steel		1.56	39.6	1.24	31.5	15/16"	0.23	5	25
3/8"	T3F3-SS	3/8" - 18 NPT	316 stainless		1.56	39.6	1.24	31.5	15/16"	0.23	5	25

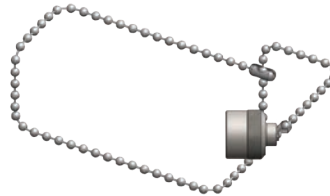
## T-Series Hydraulic Couplings



Body Size	T-Series High Pressure Poppet Interchange Nipple (Female Threads)											
	Part Detail				Length		Maximum OD		Hex Inch	Weight Lb	Package Qty	
	Part Number	Threads	Material		Inch	mm	Inch	mm			Bag	Box
3/8"	T3F3-PV	3/8" - 18 NPT	steel		1.53	38.9	1.19	30.226	15/16"	0.23	5	25
3/8"	T3F3-SS-PV	3/8" - 18 NPT	316 stainless		1.53	38.9	1.19	30.226	15/16"	0.23	5	25



Body Size	T-Series Coupler Rigid Dust Plug						
	Part Detail				Weight Lb	Package Qty	
	Part Number	Lanyard	Body			Bag	Box
1/4"	2TDP	rubber	steel		0.10	5	50
3/8"	3TDP	rubber	steel		0.16	5	25



Body Size	T-Series Nipple Rigid Dust Cap						
	Part Detail				Weight Lb	Package Qty	
	Part Number	Lanyard	Body			Bag	Box
1/4"	T2DC	SS bead chain	steel		0.12	5	50
3/8"	T3DC	SS bead chain	steel		0.19	5	25

Body Size	T-Series High Pressure Enerpac Interchange Coupler Seal Kits							
	Part Detail				Price	Seal Kit Contents	Package Qty	
	Part Number	Coupler Style	Seal Material				Bag	Box
1/4"	2T-SKIT	ball valve	Urethane			Body Seal	25	200
3/8"	3T-SKIT	ball valve	Urethane			Body Seal	25	200