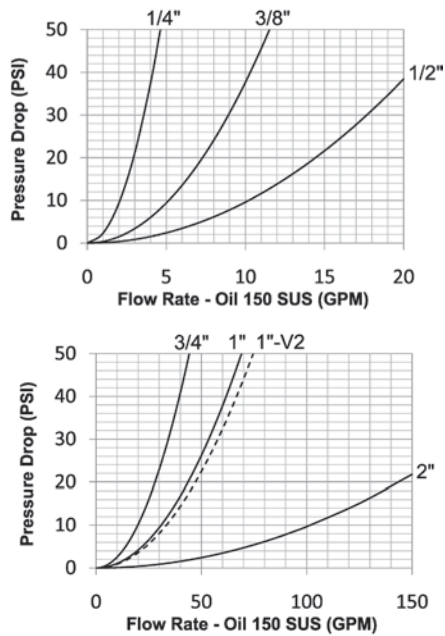


# ST-Series Hydraulic Couplings

## Interchange Data:

- Interchangeable with Snap-Tite 71-Series



## Materials:

- Machined components are manufactured using solid steel or 316 stainless bar stock.
- Stainless steel balls, retaining rings, and springs maximize corrosion resistance and extend service life.
- Steel componentry is plated using ROHS Compliant Trivalent Chrome.
- Steel coupler sleeves are hardened to resist deformation and maximize service life.
- Steel nipples are hardened to provide heavy duty performance.

## Seal Components:

- Nitrile (Buna-N) seals are standard, providing a temperature range of -40°F to +250°F (-40°C to +121°C).
- All couplers and nipples incorporate PTFE anti-extrusion rings to protect the seal components from dynamic impulse damage.

## Rated Pressure Chart:

Body Size	ST-Series Snap-Tite 71-Series Interchange							
	Steel Coupler/Plug Coupled				316 Stainless Coupler/Plug Coupled			
	Maximum Working		Burst		Maximum Working		Burst	
	PSI	Bar	PSI	Bar	PSI	Bar	PSI	Bar
1/4"	10,000	700	27,300	1,800	5,000	345	28,000	1,900
3/8"	10,000	700	27,300	1,800	5,000	345	28,000	1,900
1/2"	10,000	700	22,500	1,500	5,000	345	25,000	1,700
3/4"	7,500	500	20,200	1,400	5,000	345	22,800	1,550
1"	7,500	500	19,400	1,300	4,000	275	18,500	1,250
1"-V2	8,500	585	25,900	1,750	-	-	-	-
2"	5,000	345	16,000	1,100	3,000	200	10,000	700

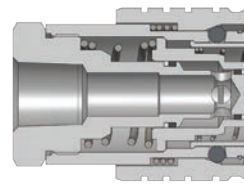
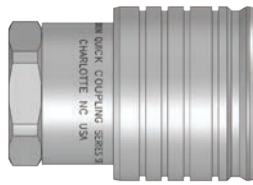
## Technical Specifications:

Body Size	Interchange Standards				Functional Parameters				
	U.S. Military	U.S. Government	International Standards	ANSI/NFPA Standards	Locking Ball Quantity	Air Inclusion	Fluid Loss	Vacuum Inch HG	Flow $\Delta P = 22$ PSI
1/4"	-	-	-	-	10	0.01cc	0.02cc	N/R	3.1 GPM
3/8"	-	-	-	-	10	0.02cc	0.02cc	N/R	7.7 GPM
1/2"	-	-	-	-	12	0.03cc	0.03cc	N/R	15 GPM
3/4"	-	-	-	-	12	0.04cc	0.06cc	N/R	30 GPM
1"	-	-	-	-	12	0.06cc	0.07cc	N/R	45 GPM
1"-V2	-	-	-	-	12	0.09cc	0.10cc	N/R	50 GPM
2"	-	-	-	-	15	3.14cc	5.25cc	N/R	150 GPM

# ST-Series Hydraulic Couplings

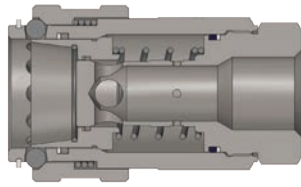
## List Price Option Adders:

Body Size	Standard Seal Options								Kalrez® Seal Options						Sleeve		Treatments	
	Viton®		EPDM		Mil-Nitrile		Fuel Nitrile		4079		6375		7075		Locking		Oxy-Clean	
	Pre	Add \$	Pre	Add \$	Pre	Add \$	Pre	Add \$	Pre	Add \$	Pre	Add \$	Pre	Add \$	Suf	Add \$	Suf	Add \$
1/4"	F-	\$0.00	P-		M-		JF-			POR	K6-	POR	K7-	POR	-LS		-C1	
3/8"	F-	0.00	P-		M-		JF-		K4-	POR	K6-	POR	K7-	POR	-LS		-C1	
1/2"	F-	0.00	P-		M-		JF-		K4-	POR	K6-	POR	K7-	POR	-LS		-C1	
3/4"	F-	0.00	P-		M-		JF-		K4-	POR	K6-	POR	K7-	POR	-LS		-C1	
1"	F-	0.00	P-		M-		JF-		K4-	POR	K6-	POR	K7-	POR	-LS		-C1	
1"-V2	F-	0.00	P-		M-		JF-		K4-	POR	K6-	POR	K7-	POR	-LS		-C1	
2"	F-	0.00	P-		M-		JF-		K4-	POR	K6-	POR	K7-	POR	-LS		-C1	



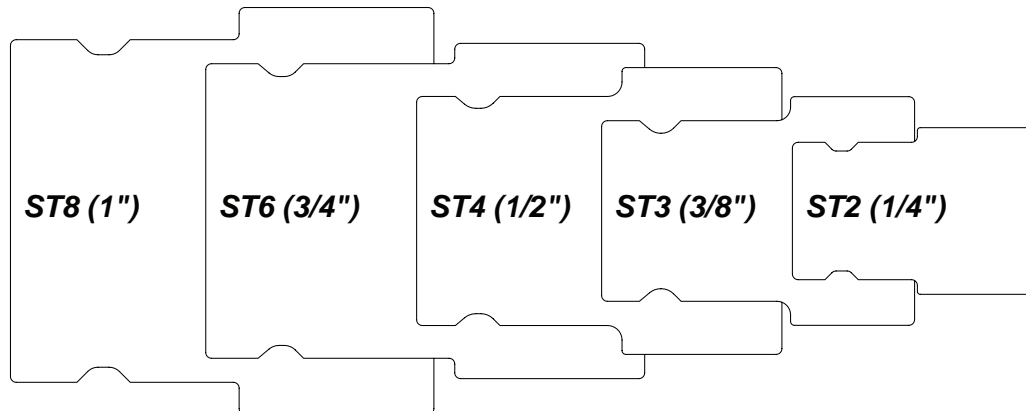
Body Size	ST-Series Snap-Tite 71-Series Interchange Coupler (Female Threads)											
	Part Detail				Length		Maximum OD		Hex Inch	Weight Lb	Package Qty	
	Part Number	Threads	Material		Inch	mm	Inch	mm			Bag	Box
1/4"	2STF2	1/4" - 18 NPTF	steel		1.96	49.8	1.23	31.2	15/16"	0.25	5	25
1/4"	2STF2-SS	1/4" - 18 NPTF	316 stainless		1.96	49.8	1.23	31.2	15/16"	0.26	5	25
1/4"	2STBF2	1/4" - 19 BSPP	steel		1.96	49.8	1.23	31.2	15/16"	0.25	5	25
1/4"	2STBF2-SS	1/4" - 19 BSPP	316 stainless		1.96	49.8	1.23	31.2	15/16"	0.26	5	25
3/8"	3STF2	1/4" - 18 NPTF	steel		2.36	59.9	1.6	40.6	1-3/16"	0.38	5	25
3/8"	3STF3	3/8" - 18 NPTF	steel		2.36	59.9	1.6	40.6	1-3/16"	0.37	5	25
3/8"	3STF3-SS	3/8" - 18 NPTF	316 stainless		2.36	59.9	1.6	40.6	1-3/16"	0.38	5	25
3/8"	3STBF3	3/8" - 19 BSPP	steel		2.36	59.9	1.6	40.6	1-3/16"	0.37	5	25
3/8"	3STBF3-SS	3/8" - 19 BSPP	316 stainless		2.36	59.9	1.6	40.6	1-3/16"	0.38	5	25
3/8"	3STF4	1/2" - 14 NPTF	steel		2.36	59.9	1.6	40.6	1-3/16"	0.36	5	25
3/8"	3STF4-SS	1/2" - 14 NPTF	316 stainless		2.36	59.9	1.6	40.6	1-3/16"	0.37	5	25
3/8"	3STBF4	1/2" - 14 BSPP	steel		2.36	59.9	1.6	40.6	1-3/16"	0.36	5	25
3/8"	3STBF4-SS	1/2" - 14 BSPP	316 stainless		2.36	59.9	1.6	40.6	1-3/16"	0.37	5	25
1/2"	4STF4	1/2" - 14 NPTF	steel		2.77	70.4	1.98	50.3	1-1/2"	0.47	-	20
1/2"	4STF4-SS	1/2" - 14 NPTF	316 stainless		2.77	70.4	1.98	50.3	1-1/2"	0.49	-	20
1/2"	4STBF4	1/2" - 14 BSPP	steel		2.77	70.4	1.98	50.3	1-1/2"	0.47	-	20
1/2"	4STBF4-SS	1/2" - 14 BSPP	316 stainless		2.77	70.4	1.98	50.3	1-1/2"	0.49	-	20
1/2"	4STOF4	3/4" - 16 ORB	steel		2.77	70.4	1.98	50.3	1-1/2"	0.49	-	20
3/4"	6STF6	3/4" - 14 NPTF	steel		3.03	77.0	2.35	59.7	1-3/4"	1.98	-	10
3/4"	6STF6-SS	3/4" - 14 NPTF	316 stainless		3.03	77.0	2.35	59.7	1-3/4"	2.05	-	10
3/4"	6STBF6	3/4" - 14 BSPP	steel		3.03	77.0	2.351	59.7	1-3/4"	1.98	-	10
3/4"	6STBF6-SS	3/4" - 14 BSPP	316 stainless		3.03	77.0	2.35	59.7	1-3/4"	2.05	-	10
3/4"	6STOF6	1-1/16" - 12 ORB	steel		3.03	77.0	2.35	59.7	1-3/4"	1.89	-	10
1"	8STF8	1" - 11 1/2 NPTF	steel		3.33	84.6	2.73	69.3	2"	2.78	-	10
1"	8STF8-SS	1" - 11 1/2 NPTF	316 stainless		3.33	84.6	1.55	39.3	2"	2.83	-	10
1"	8STBF8	1" - 11 BSPP	steel		3.33	84.6	2.73	69.3	2"	2.78	-	10
1"	8STBF8-SS	1" - 11 BSPP	316 stainless		3.33	84.6	2.73	69.3	2"	2.83	-	10
1"	8STOF8	1-5/16" - 12 ORB	steel		3.33	84.6	2.73	69.3	2"	2.71	-	10
1"	8STF10	1-1/4" - 11 1/2 NPTF	steel		3.67	93.2	2.73	69.3	2"	2.84	-	10
1"	8STF10-SS	1-1/4" - 11 1/2 NPTF	316 stainless		3.67	93.2	2.73	69.3	2"	2.90	-	10
1"	8STBF10	1-1/4" - 11 BSPP	steel		3.67	93.2	2.73	69.3	2"	2.84	-	10
1"	8STBF10-SS	1-1/4" - 11 BSPP	316 stainless		3.67	93.2	2.73	69.3	2"	2.90	-	10
1"	8STOF10	1-5/8" - 12 ORB	steel		3.67	93.2	2.73	69.3	2"	2.79	-	10

## ST-Series Hydraulic Couplings

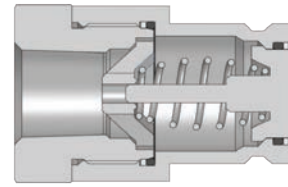
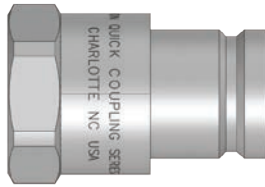


Body Size	ST-Series Snap-Tite 71-Series 'Old Style' Interchange Coupler (Female Threads)											
	Part Detail				Length		Maximum OD		Hex Inch	Weight Lb	Package Qty	
	Part Number	Threads	Material		Inch	mm	Inch	mm			Bag	Box
1"	8STF8-V2	1" - 11 1/2 NPTF	steel		4.55	115.6	2.74	69.6	2"	2.83	-	10
1"	8STBF8-V2	1" - 11 BSPP	steel		4.55	115.6	2.74	69.6	2"	2.84	-	10
1"	8STF10-V2	1-1/4" - 11 1/2 NPTF	steel		4.90	124.5	2.74	69.6	2"	2.87	-	10
2"	16STF12	1-1/2" - 11 1/2 NPTF	steel		6.20	157.5	4.47	113.5	3.78"	9.07	-	1
2"	16STBF12	1-1/2" - 11 BSPP	steel		6.20	157.5	4.47	113.5	3.78"	9.07	-	1
2"	16STOF12	1-7/8" - 12 ORB	steel		6.20	157.5	4.47	113.5	3.78"	8.96	-	1
2"	16STF16	2" - 11 1/2 NPTF	steel		6.20	157.5	4.47	113.5	3.78"	8.74	-	1
2"	16STF16-SS	2" - 11 1/2 NPTF	316 stainless		6.20	157.5	4.47	113.5	3.78"	8.74	-	1
2"	16STBF16	2" - 11 BSPP	steel		6.20	157.5	4.47	113.5	3.78"	8.74	-	1
2"	16STOF16	2-1/2" - 12 ORB	steel		6.20	157.5	4.47	113.5	3.78"	8.63	-	1

### ST Series Profiles

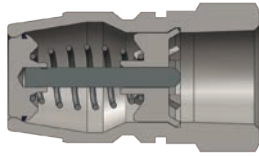


## ST-Series Hydraulic Couplings

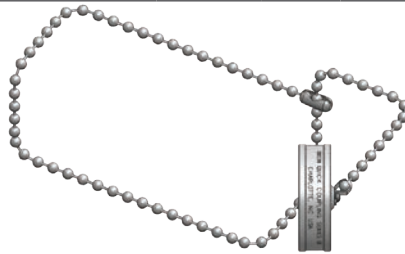


Body Size	ST-Series Snap-Tite 71-Series Interchange Nipple (Female Threads)											
	Part Detail				Length		Maximum OD		Hex Inch	Weight Lb	Package Qty	
	Part Number	Threads	Material		Inch	mm	Inch	mm			Bag	Box
1/4"	ST2F2	1/4" - 18 NPTF	steel		1.84	46.7	0.90	22.9	13/16"	0.16	5	25
1/4"	ST2F2-SS	1/4" - 18 NPTF	316 stainless		1.84	46.7	0.90	22.9	13/16"	0.16	5	25
1/4"	ST2BF2	1/4" - 19 BSPP	steel		1.84	46.7	0.90	22.9	13/16"	0.16	5	25
1/4"	ST2BF2-SS	1/4" - 19 BSPP	316 stainless		1.84	46.7	0.90	22.9	13/16"	0.16	5	25
3/8"	ST3F2	1/4" - 18 NPTF	steel		2.32	58.9	1.48	37.6	1"	0.29	5	25
3/8"	ST3F3	3/8" - 18 NPTF	steel		2.32	58.9	1.48	37.6	1"	0.26	5	25
3/8"	ST3F3-SS	3/8" - 18 NPTF	316 stainless		2.32	58.9	1.48	37.6	1"	0.26	5	25
3/8"	ST3BF3	3/8" - 19 BSPP	steel		2.32	58.9	1.48	37.6	1"	0.26	5	25
3/8"	ST3BF3-SS	3/8" - 19 BSPP	316 stainless		2.32	58.9	1.48	37.6	1"	0.26	5	25
3/8"	ST3F4	1/2" - 14 NPTF	steel		2.32	58.9	1.48	37.6	1"	0.26	5	25
3/8"	ST3F4-SS	1/2" - 14 NPTF	316 stainless		2.32	58.9	1.48	37.6	1"	0.26	5	25
3/8"	ST3BF4	1/2" - 14 BSPP	steel		2.32	58.9	1.48	37.6	1"	0.26	5	25
3/8"	ST3BF4-SS	1/2" - 14 BSPP	316 stainless		2.32	58.9	1.48	37.6	1"	0.26	5	25
1/2"	ST4F4	1/2" - 14 NPTF	steel		2.37	60.2	1.65	41.9	1-1/2"	0.42	-	20
1/2"	ST4F4-SS	1/2" - 14 NPTF	316 stainless		2.37	60.2	1.65	41.9	1-1/2"	0.42	-	20
1/2"	ST4BF4	1/2" - 14 BSPP	steel		2.37	60.2	1.65	41.9	1-1/2"	0.42	-	20
1/2"	ST4BF4-SS	1/2" - 14 BSPP	316 stainless		2.37	60.2	1.65	41.9	1-1/2"	0.42	-	20
1/2"	ST4OF4	3/4" - 16 ORB	steel		2.37	60.2	1.65	41.9	1-1/2"	0.42	-	20
3/4"	ST6F6	3/4" - 14 NPTF	steel		2.96	75.2	1.92	48.8	1-3/4"	1.09	-	10
3/4"	ST6F6-SS	3/4" - 14 NPTF	316 stainless		2.96	75.2	1.92	48.8	1-3/4"	1.14	-	10
3/4"	ST6BF6	3/4" - 14 BSPP	steel		2.96	75.2	1.92	48.8	1-3/4"	1.09	-	10
3/4"	ST6BF6-SS	3/4" - 14 BSPP	316 stainless		2.96	75.2	1.92	48.8	1-3/4"	1.14	-	10
3/4"	ST6OF6	1-1/16" - 12 ORB	steel		2.96	75.2	1.92	48.8	1-3/4"	1.01	-	10
1"	ST8F8	1" - 11 1/2 NPTF	steel		3.22	81.8	2.10	53.3	1-7/8"	1.48	-	10
1"	ST8F8-SS	1" - 11 1/2 NPTF	316 stainless		3.22	81.8	2.10	53.3	1-7/8"	1.56	-	10
1"	ST8BF8	1" - 11 BSPP	steel		3.22	81.8	2.10	53.3	1-7/8"	1.48	-	10
1"	ST8BF8-SS	1" - 11 BSPP	316 stainless		3.22	81.8	2.10	53.3	1-7/8"	1.56	-	10
1"	ST8OF8	1-5/16" - 12 ORB	steel		3.22	81.8	2.10	53.3	1-7/8"	1.37	-	10
1"	ST8F10	1-1/4" - 11 1/2 NPTF	steel		3.48	88.4	2.20	55.9	2"	1.63	-	10
1"	ST8F10-SS	1-1/4" - 11 1/2 NPTF	316 stainless		3.48	88.4	2.20	55.9	2"	1.69	-	10
1"	ST8BF10	1-1/4" - 11 BSPP	steel		3.48	88.4	2.20	55.9	2"	1.63	-	10
1"	ST8BF10-SS	1-1/4" - 11 BSPP	316 stainless		3.48	88.4	2.20	55.9	2"	1.69	-	10
1"	ST8OF10	1-5/8" - 12 ORB	steel		3.48	88.4	2.20	55.9	2"	1.54	-	10

## ST-Series Hydraulic Couplings



Body Size	ST-Series Snap-Tite 71-Series 'Old Style' Interchange Nipple (Female Threads)											
	Part Detail				Length		Maximum OD		Hex Inch	Weight Lb	Package Qty	
	Part Number	Threads	Material		Inch	mm	Inch	mm			Bag	Box
1"	ST8F8-V2	1" - 11 1/2 NPTF	steel		3.26	82.8	1.92	48.8	1-3/4"	1.53	-	10
1"	ST8BF8-V2	1" - 11 BSPP	steel		3.26	82.8	1.92	48.8	1-3/4"	1.48	-	10
1"	ST8F10-V2	1-1/4" - 11 1/2 NPTF	steel		3.5	88.9	1.98	50.3	2"	1.48	-	10
2"	ST16F12	1-1/2" - 11 1/2 NPTF	steel		4.50	114.3	3.48	88.4	3-1/4"	4.32	-	1
2"	ST16BF12	1-1/2" - 11 BSPP	steel		4.50	114.3	3.48	88.4	3-1/4"	4.32	-	1
2"	ST16OF12	1-7/8" - 12 ORB	steel		4.50	114.3	3.48	88.4	3-1/4"	4.21	-	1
2"	ST16F16	2" - 11 1/2 NPTF	steel		4.50	114.3	3.48	88.4	3-1/4"	4.16	-	1
2"	ST16F16-SS	2" - 11 1/2 NPTF	316 stainless		4.50	114.3	3.48	88.4	3-1/4"	4.16	-	1
2"	ST16BF16	2" - 11 BSPP	steel		4.50	114.3	3.48	88.4	3-1/4"	4.16	-	1
2"	ST16OF16	2-1/2" - 12 ORB	steel		4.50	114.3	3.48	88.4	3-1/4"	4.05	-	1

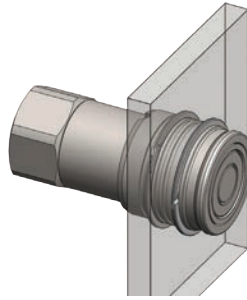


Body Size	ST-Series Coupler Dust Plug						
	Part Detail				Weight Lb	Package Qty	
	Part Number	Lanyard	Body			Bag	Box
1/4"	2STDP-A	SS Bead Chain	aluminum		0.15	5	25
3/8"	3STDP-A	SS Bead Chain	aluminum		0.18	5	25
1/2"	4STDP-A	SS Bead Chain	aluminum		0.23	5	25
3/4"	6STDP-A	SS Bead Chain	aluminum		0.36	-	10
1"	8STDP-A	SS Bead Chain	aluminum		0.39	-	10
1"-V2	8STDP-A-V2	SS Bead Chain	aluminum		0.48	-	10
2"	16STDP-A	SS Bead Chain	aluminum		0.94	-	1



Body Size	ST-Series Nipple Dust Plug						
	Part Detail				Weight Lb	Package Qty	
	Part Number	Lanyard	Body			Bag	Box
1/4"	ST2DC-A	SS Bead Chain	aluminum		0.16	5	25
3/8"	ST3DC-A	SS Bead Chain	aluminum		0.19	5	25
1/2"	ST4DC-A	SS Bead Chain	aluminum		0.22	5	25
3/4"	ST6DC-A	SS Bead Chain	aluminum		0.26	-	10
1"	ST8DC-A	SS Bead Chain	aluminum		0.28	-	10
1"-V2	ST8DC-A-V2	SS Bead Chain	aluminum		0.46	-	10
2"	ST16DC-A	SS Bead Chain	aluminum		0.76	-	1

## ST-Series Hydraulic Couplings



Body Size	ST-Series Snap-Tite 71-Series Interchange Coupler Bulkhead Kits						
	Part Detail				Bulkhead Kit Contents	Package Qty	
	Part Number	Mounting Hole ID	Ring Material			Bag	Box
1/4"	2ST-BMK	1.250"	steel		Two 360° Retaining Rings	1	25
3/8"	3ST-BMK	1.625"	steel		Two 360° Retaining Rings	1	25
1/2"	4ST-BMK	2.000"	steel		Two 360° Retaining Rings	1	25
3/4"	6ST-BMK	2.375"	steel		Two 360° Retaining Rings	1	25

Body Size	ST-Series Snap-Tite 71-Series Interchange Coupler Seal Kits						
	Part Detail				Seal Kit Contents	Package Qty	
	Part Number	Coupler Style	Seal Material			Bag	Box
1/4"	2ST-SKIT	all	Nitrile		Two Seals and Anti-Extrusion Rings	25	200
3/8"	3ST-SKIT	all	Nitrile		Two Seals and Anti-Extrusion Rings	25	200
1/2"	4ST-SKIT	all	Nitrile		Two Seals and Anti-Extrusion Rings	25	200
3/4"	6ST-SKIT	all	Nitrile		Two Seals and Anti-Extrusion Rings	25	200
1"	8ST-SKIT	all	Nitrile		Two Seals and Anti-Extrusion Rings	25	200
1"	8ST-SKIT-V2	all	Nitrile		Three Seals and Two Anti-Extrusion Rings	25	200
2"	16ST-SKIT	all	Nitrile		Three Seals and Two Anti-Extrusion Rings	10	100

Body Size	ST-Series Snap-Tite 71-Series Interchange Nipple Seal Kits						
	Part Detail				Seal Kit Contents	Package Qty	
	Part Number	Coupler Style	Seal Material			Bag	Box
1/4"	ST2-SKIT	all	Nitrile		Valve O-Ring/Back-up and Adapter O-Ring	25	200
3/8"	ST3-SKIT	all	Nitrile		Valve O-Ring/Back-up and Adapter O-Ring	25	200
1/2"	ST4-SKIT	all	Nitrile		Valve O-Ring/Back-up and Adapter O-Ring	25	200
3/4"	ST6-SKIT	all	Nitrile		Valve O-Ring/Back-up and Adapter O-Ring	25	200
1"	ST8-SKIT	all	Nitrile		Valve O-Ring/Back-up and Adapter O-Ring	25	200
2"	ST16-SKIT	all	Nitrile		Main Valve Seal	25	200