

R154 HOSE FITTINGS

SMOOTHBORE HOSE FITTINGS

HIGH PERFORMANCE

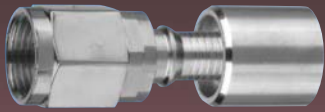
R154 HOSE FITTINGS

R154 hose fittings also utilize the exclusive Titeflex progressive swaging method of attachment, with positive braid lock.

MATERIALS:

All JIC wetted surfaces are type 300 stainless steel.

R154 JIC-FEMALE SWIVEL (37° SEAT)



STAINLESS STEEL PART NUMBER	SIZE IN.	THREAD	NOMINAL ID IN.
Y40004-42	1/4	7/16 – 20	.146
Y40006-42	3/8	9/16 – 18	.271
Y40008-42	1/2	3/4 – 16	.365

WARNING: These products can be used to convey hazardous fluids, steam, and other dangerous materials which can cause personal injury or property damage if released through misuse, misapplication, or damaged. The user is responsible to analyze each application prior to specifying any product from this catalog. Due to the wide variety of operating conditions and applications, the user, through personal analysis and testing, is solely responsible for final product selection and meeting all performance, safety, and warning requirements. Careful selection, proper assembly and use of hose fittings and accessories is essential for the safe and warranted operation of the hose assembly.