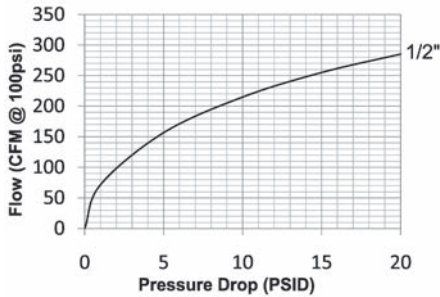


P-Series Pneumatic Couplings

Interchange Data:

- Thor Finger-Lock Interchange
- Interchanges with Thor PHC-Series, National Series 'A', and Dixon Dual-Lock.



Materials:

- Machined components are manufactured using solid steel, brass, or 303 stainless steel bar stock.
- Phosphor Bronze retaining ring and spring maximize corrosion resistance and extend service life.
- Steel componentry is plated using ROHS Compliant Trivalent Chrome.

Seal Components:

- Nitrile (Buna-N) seals are standard, temperature range -40°F to +250°F (-40°C to +121°C).

Rated Pressure Chart:

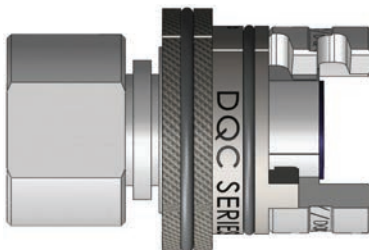
Body Size	P-Series Thor Interchange (Connected)											
	Steel Coupler/Plug				Brass Coupler/Plug				303 Stainless Steel Coupler/Plug			
	Max. Working		Burst		Max. Working		Burst		Max. Working		Burst	
	PSI	Bar	PSI	Bar	PSI	Bar	PSI	Bar	PSI	Bar	PSI	Bar
1/2"	300	20	2,600	180	300	20	3,500	240	300	20	4,500	310

Technical Specifications:

Body Size	Interchange Standards				Functional Parameters				
	U.S. Military	U.S. Government	International Standards	ANSI/NFPA Standards	Locking Mechanism	Air Inclusion	Fluid Loss	Vacuum Rating	Flow $\Delta P = 15$ PSI
1/2"	-	-	-	-	Latch Fingers	N/A	N/A	N/R	255 CFM

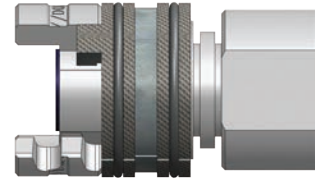
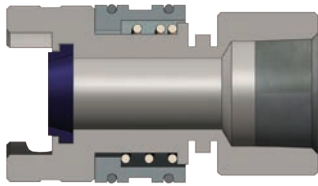
List Price Option Adders:

Body Size	Seals		Sleeve Options				Staked Ferrule Option					
	Viton®		Flanged		Lock Clip		1/2" Barb		3/4" Barb		3/4" Stainless Barb	
	Pre	Add \$	Suf	Add \$	Part Number	List \$	Suf	Add \$	Suf	Add \$	Suf	Add \$
1/2"	F-		-FS		4P-CLIP		-WF43		-WF63		-WFS63	

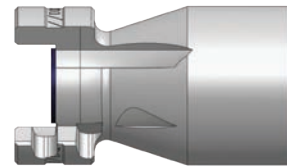
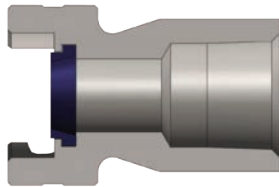


P Series Coupler with -FS Flanged Sleeve Option

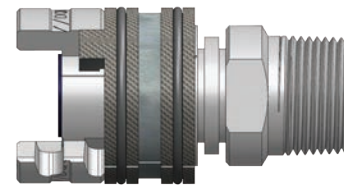
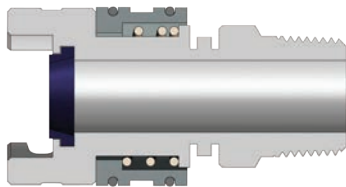
P-Series Pneumatic Couplings



Body Size	P-Series Thor Interchange Coupler (Female Threads)											
	Part Detail			Length		Maximum OD		Wrench Flats	Weight Lb	Package Qty		
	Part Number	Threads	Material	Inch	mm	Inch	mm			Bag	Box	
1/2"	4PF4	1/2" - 14 NPTF	steel	2.75	69.9	1.55	39.4	1-1/4"	0.64	-	25	
1/2"	4PF6	3/4" - 14 NPTF	steel	2.75	69.9	1.55	39.4	1-1/4"	0.55	-	25	
1/2"	4PF6-B	3/4" - 14 NPTF	brass	2.75	69.9	1.55	39.4	1-1/4"	0.58	-	25	
1/2"	4PF6-S	3/4" - 14 NPTF	303 stainless	2.75	69.9	1.55	39.4	1-1/4"	0.57	-	25	

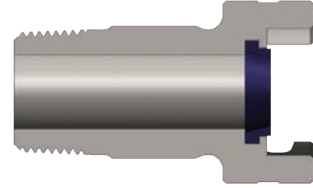
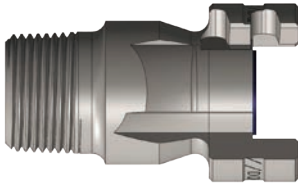


Body Size	P-Series Thor Interchange Nipple (Female Threads)											
	Part Detail			Length		Maximum OD		Wrench Flats	Weight Lb	Package Qty		
	Part Number	Threads	Material	Inch	mm	Inch	mm			Bag	Box	
1/2"	P4F3	3/8"-18 NPTF	steel	1.79	45.5	1.55	39.4	7/8"	0.49	-	25	
1/2"	P4F4	1/2"-14 NPTF	steel	2.25	57.2	1.55	39.4	1-5/16"	0.75	-	25	
1/2"	P4F4-B	1/2"-14 NPTF	brass	2.25	57.2	1.55	39.4	1-5/16"	0.83	-	25	
1/2"	P4F6	3/4"-14 NPTF	steel	2.34	59.4	1.55	39.4	1-5/16"	0.66	-	25	
1/2"	P4F6-9	3/4"-14 NPTF	steel/Tefcoat	2.34	59.4	1.55	39.4	1-5/16"	0.66	-	25	
1/2"	P4F6-B	3/4"-14 NPTF	brass	2.34	59.4	1.55	39.4	1-5/16"	0.74	-	25	
1/2"	P4F6-S	3/4"-14 NPTF	303 stainless	2.34	59.4	1.55	39.4	1-5/16"	0.69	-	25	
1/2"	P4F8	1"-11 1/2 NPTF	steel	2.76	70.1	1.55	39.4	1-7/16"	0.72	-	25	
1/2"	P4F8-B	1"-11 1/2 NPTF	brass	2.76	70.1	1.55	39.4	1-7/16"	0.77	-	25	

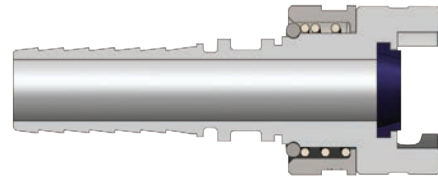
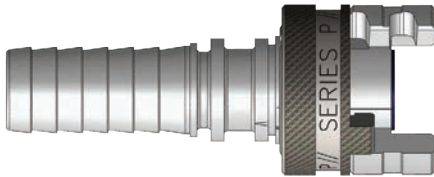


Body Size	P-Series Thor Interchange Coupler (Male Threads)											
	Part Detail			Length		Maximum OD		Wrench Flats	Weight Lb	Package Qty		
	Part Number	Threads	Material	Inch	mm	Inch	mm			Bag	Box	
1/2"	4PM3	3/8" - 18 NPTF	steel	2.93	74.4	1.55	39.4	7/8"	0.48	-	25	
1/2"	4PM4	1/2" - 14 NPTF	steel	2.98	75.7	1.55	39.4	7/8"	0.48	-	25	
1/2"	4PM6	3/4" - 14 NPTF	steel	2.98	75.7	1.55	39.4	1-1/16"	0.51	-	25	
1/2"	4PM6-9	3/4" - 14 NPTF	steel/Tefcoat	2.98	75.7	1.55	39.4	1-1/16"	0.51	-	25	
1/2"	4PM6-S	3/4" - 14 NPTF	303 stainless	2.98	75.7	1.55	39.4	1-1/16"	0.50	-	25	
1/2"	4PM8	1" - 11 1/2 NPTF	steel	3.11	79.0	1.55	39.4	1-3/8"	0.56	-	25	

P-Series Pneumatic Couplings



Body Size	P-Series Thor Interchange Nipple (Male Threads)											
	Part Detail				Length		Maximum OD		Wrench Flats	Weight Lb	Package Qty	
	Part Number	Threads	Material		Inch	mm	Inch	mm			Bag	Box
1/2"	P4M3	3/8" - 18 NPTF	steel		2.00	50.8	1.55	39.4	7/8"	0.29	-	25
1/2"	P4M4	1/2" - 14 NPTF	steel		2.25	57.2	1.55	39.4	15/16"	0.32	-	25
1/2"	P4M4-B	1/2" - 14 NPTF	brass		2.25	57.2	1.55	39.4	15/16"	0.35	-	25
1/2"	P4M6	3/4" - 14 NPTF	steel		2.55	64.8	1.55	39.4	1-1/8"	0.44	-	25
1/2"	P4M6-9	3/4" - 14 NPTF	steel/Tefcoat		2.55	64.8	1.55	39.4	1-1/8"	0.44	-	25
1/2"	P4M6-B	3/4" - 14 NPTF	brass		2.55	64.8	1.55	39.4	1-1/8"	0.48	-	25
1/2"	P4M6-S	3/4" - 14 NPTF	303 stainless		2.55	64.8	1.55	39.4	1-1/8"	0.46	-	25
1/2"	P4M8	1" - 11 1/2 NPTF	steel		3.25	82.6	1.55	39.4	1-3/8"	0.62	-	25
1/2"	P4M8-B	1" - 11 1/2 NPTF	brass		3.25	82.6	1.55	39.4	1-3/8"	0.66	-	25



Body Size	P-Series Thor Interchange Coupler (Hose Barb)											
	Part Detail				Length		Maximum OD		Hex Inch	Weight Lb	Package Qty	
	Part Number	Hose ID	Material		Inch	mm	Inch	mm			Bag	Box
1/2"	4PS3	3/8"	steel		3.53	89.7	1.55	39.4	-	0.48	-	25
1/2"	4PS4	1/2"	steel		3.95	100.3	1.55	39.4	-	0.52	-	25
1/2"	4PS4-B	1/2"	brass		3.95	100.3	1.55	39.4	-	0.57	-	25
1/2"	4PS6	3/4"	steel		3.95	100.3	1.55	39.4	-	0.55	-	25
1/2"	4PS6-9	3/4"	steel/Tefcoat		3.95	100.3	1.55	39.4	-	0.55	-	25
1/2"	4PS6-B	3/4"	brass		3.95	100.3	1.55	39.4	-	0.58	-	25
1/2"	4PS6-S	3/4"	303 stainless		3.95	100.3	1.55	39.4	-	0.59	-	25
1/2"	4PS8	1"	steel		6.06	153.9	1.55	39.4	-	0.94	-	25
1/2"	4PS8-B	1"	brass		6.06	153.9	1.55	39.4	-	0.98	-	25

Body Size	P-Series Thor Interchange Replacement Seals											
	Part Detail				Seal Kit Contents					Package Qty		
	Part Number	Coupler Style	Material							Bag	Box	
1/2"	4P-SKIT	all	Nitrile		Sealing Gasket					25	500	
1/2"	F-4P-SKIT	all	Viton®		Sealing Gasket					25	500	