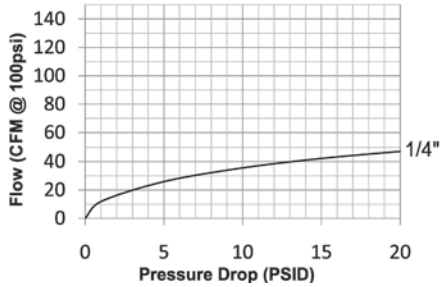


NK-Series Pneumatic Couplings

Interchange Data:

- Japanese Industrial Interchange Pneumatic Coupling
- Nitto Kohki Hi-Cupla 200, Rectus Series 13, and CEJN Series 315



Materials:

- Machined components are manufactured using solid steel bar stock.
- Stainless steel balls, retaining rings, and springs maximize corrosion resistance and extend service life.
- Steel componentry is plated using chrome-over-nickel plating.

Seal Components:

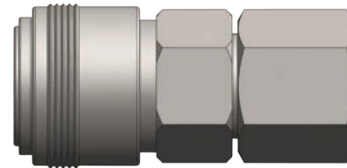
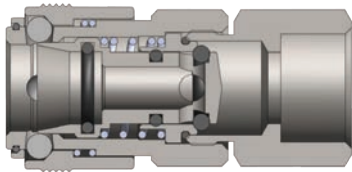
- Nitrile (Buna-N) seals are standard, providing a temperature range of -40°F to +250°F (-40°C to +121°C).

Rated Pressure Chart:

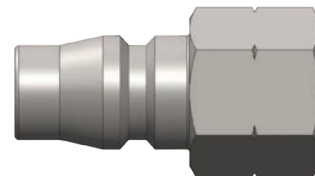
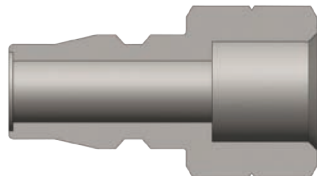
Body Size	NK-Series Japanese Industrial Interchange (Connected)			
	Coupler/Plug			
	Maximum Working		Burst	
	PSI	Bar	PSI	Bar
1/4"	300	20	13,500	931

Technical Specifications:

Body Size	Interchange Standards				Functional Parameters				
	U.S. Military	U.S. Government	International Standards	ANSI/NFPA Standards	Locking Ball Quantity	Air Inclusion	Fluid Loss	Vacuum Rating	Flow $\Delta P = 15$ PSI
1/4"	-	-	-	-	4	N/A	N/A	N/R	42 CFM

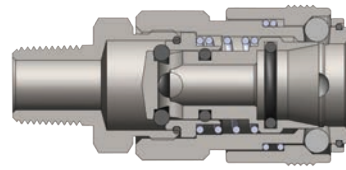
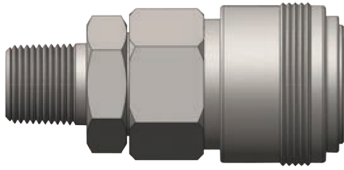


Body Size	NK-Series Japanese Industrial Interchange Coupler (Female Threads)										
	Part Detail			Length	Maximum OD		Hex Inch	Weight Lb	Package Qty		
	Part Number	Threads	Material		Inch	mm			Bag	Box	
1/4"	2NKF2	1/4" - 18 NPT	steel	1.97	50.0	1.02	26.0	3/4"	0.28	10	100
1/4"	2NKBF2	1/4" - 19 BSPP	steel	1.97	50.0	1.02	26.0	3/4"	0.28	10	100

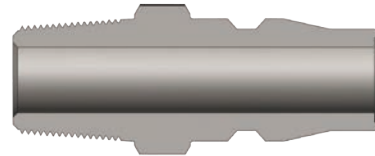
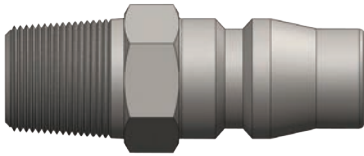


Body Size	NK-Series Japanese Industrial Interchange Nipple (Female Threads)										
	Part Detail			Length	Maximum OD		Hex Inch	Weight Lb	Package Qty		
	Part Number	Threads	Material		Inch	mm			Bag	Box	
1/4"	NK2F2	1/4" - 18 NPT	steel	1.39	35.2	0.52	13.1	5/8"	0.05	10	100
1/4"	NK2BF2	1/4" - 19 BSPP	steel	1.39	35.2	0.52	13.1	5/8"	0.05	10	100

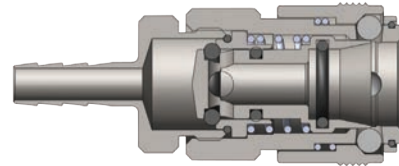
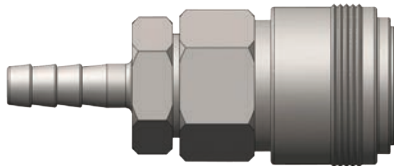
NK-Series Pneumatic Couplings



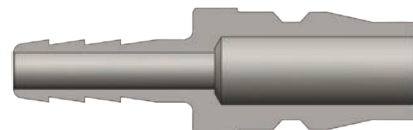
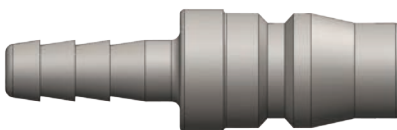
Body Size	NK-Series Japanese Industrial Interchange Coupler (Male Threads)											
	Part Detail				Length		Maximum OD		Hex Inch	Weight Lb	Package Qty	
	Part Number	Threads	Material		Inch	mm	Inch	mm			Bag	Box
1/4"	2NKM2	1/4" - 18 NPT	steel		2.12	54.0	1.02	26.0	3/4"	0.28	10	100
1/4"	2NKBM2	1/4" - 19 BSPT	steel		2.12	54.0	1.02	26.0	3/4"	0.29	10	100



Body Size	NK-Series Japanese Industrial Interchange Nipple (Male Threads)											
	Part Detail				Length		Maximum OD		Hex Inch	Weight Lb	Package Qty	
	Part Number	Threads	Material		Inch	mm	Inch	mm			Bag	Box
1/4"	NK2M2	1/4" - 18 NPT	steel		1.54	39.2	0.52	13.1	5/8"	0.05	10	100
1/4"	NK2BM2	1/4" - 19 BSPT	steel		1.54	39.2	0.52	13.1	5/8"	0.05	10	100



Body Size	NK-Series Japanese Industrial Interchange Coupler (Hose Barb)											
	Part Detail				Length		Maximum OD		Hex Inch	Weight Lb	Package Qty	
	Part Number	Hose ID	Material		Inch	mm	Inch	mm			Bag	Box
1/4"	2NKS2	1/4"	steel		2.40	61.0	1.02	26.0	3/4"	0.31	10	100



Body Size	NK-Series Japanese Industrial Interchange Nipple (Hose Barb)											
	Part Detail				Length		Maximum OD		Hex Inch	Weight Lb	Package Qty	
	Part Number	Hose ID	Material		Inch	mm	Inch	mm			Bag	Box
1/4"	NK2S2	1/4"	steel		1.78	45.2	0.44	11.3	-	0.05	10	100