

M-Series Pneumatic Couplings

Interchange Data:

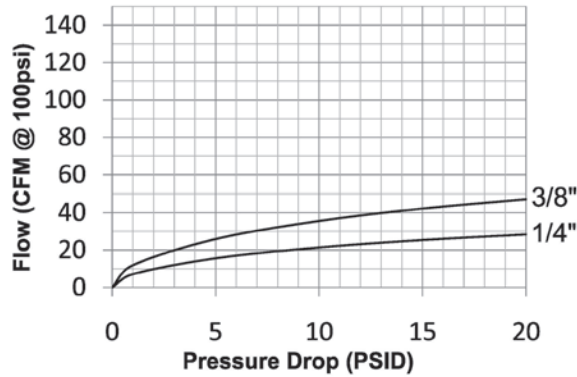
- ARO 210 (1/4") and ARO 310 (3/8") Interchange
- Automatic Couplings Interchange with ARO 210/310 and Hansen Series 210/310
- Manual Couplings Interchange with Parker 50-Series and Amflow Type 'B'

Materials:

- Machined components are manufactured using solid steel or brass bar stock.
- Stainless steel balls, retaining rings, pins and springs maximize corrosion resistance and extend service life.
- Steel componentry is plated using ROHS Compliant Trivalent Chrome.
- Automatic couplers constructed of steel.
- Manual couplers constructed of brass.

Seal Components:

- Nitrile (Buna-N) seals are standard providing a temperature range of -40°F to +250°F (-40°C to +121°C).

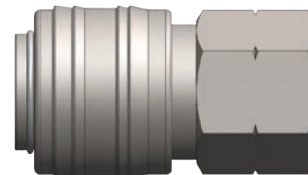
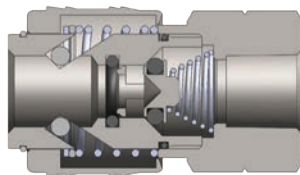


Rated Pressure Chart:

| Body Size | M-Series ARO Interchange (Connected) | | | | | | | | | | | | | | | |
|-----------|--------------------------------------|-----|-------|-----|-------------------------|-----|-------|-----|---------------------------|-----|--------|-----|---------------------------|-----|--------|-----|
| | Auto Coupler/Steel Plug | | | | Auto Coupler/Brass Plug | | | | Manual Coupler/Steel Plug | | | | Manual Coupler/Brass Plug | | | |
| | Max. Working | | Burst | | Max. Working | | Burst | | Max. Working | | Burst | | Max. Working | | Burst | |
| | PSI | Bar | PSI | Bar | PSI | Bar | PSI | Bar | PSI | Bar | PSI | Bar | PSI | Bar | PSI | Bar |
| 1/4" | 300 | 20 | 2,600 | 179 | 300 | 20 | 5,000 | 345 | 300 | 20 | 12,400 | 855 | 300 | 20 | 12,700 | 876 |
| 3/8" | 300 | 20 | 3,300 | 228 | - | - | - | - | - | - | - | - | - | - | - | - |

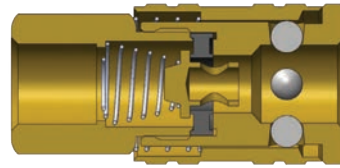
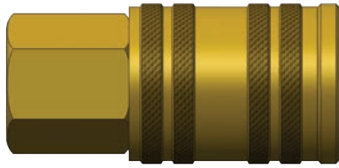
Technical Specifications:

| Body Size | Interchange Standards | | | | Functional Parameters | | | | |
|-----------|-----------------------|-----------------|-------------------------|---------------------|-----------------------|---------------|------------|---------------|--------------------------|
| | U.S. Military | U.S. Government | International Standards | ANSI/NFPA Standards | Locking Mechanism | Air Inclusion | Fluid Loss | Vacuum Rating | Flow $\Delta P = 15$ PSI |
| 1/4" | - | - | - | - | Manual - 4 Ball | N/A | N/A | N/R | 25 CFM |
| 1/4" | - | - | - | - | Auto - Pins | N/A | N/A | N/R | 22 CFM |
| 3/8" | - | - | - | - | Auto - Pins | N/A | N/A | N/R | 42 CFM |

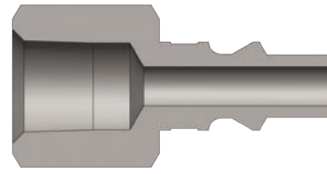


| Body Size | M-Series Automatic ARO Interchange Coupler (Female Threads) | | | | | | | | | | | |
|-----------|---|---------------|----------|--|--------|------|------------|------|----------|-----------|-------------|-----|
| | Part Detail | | | | Length | | Maximum OD | | Hex Inch | Weight Lb | Package Qty | |
| | Part Number | Threads | Material | | Inch | mm | Inch | mm | | | Bag | Box |
| 1/4" | 2MF2-PL | 1/4" - 18 NPT | steel | | 1.72 | 43.6 | 1.06 | 27.0 | 13/16" | 0.28 | 10 | 100 |
| 1/4" | 2MF3-PL | 3/8" - 18 NPT | steel | | 1.72 | 43.6 | 1.06 | 27.0 | 13/16" | 0.28 | 10 | 100 |
| 3/8" | 3MF3-PL | 3/8" - 18 NPT | steel | | 1.93 | 49.0 | 1.26 | 32.0 | 1-1/16" | 0.43 | 10 | 50 |

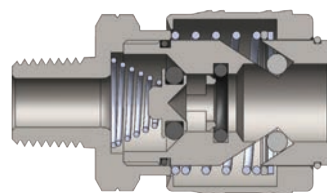
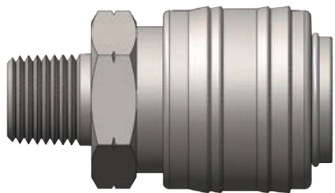
M-Series Pneumatic Couplings



| Body Size | M-Series Manual ARO Interchange Coupler (Female Threads) | | | | | | | | | | | |
|-----------|--|---------------|----------|--|--------|------|------------|------|----------|-----------|-------------|-----|
| | Part Detail | | | | Length | | Maximum OD | | Hex Inch | Weight Lb | Package Qty | |
| | Part Number | Threads | Material | | Inch | mm | Inch | mm | | | Bag | Box |
| 1/4" | 2MF2-B | 1/4" - 18 NPT | brass | | 1.97 | 50.0 | 0.87 | 22.0 | 3/4" | 0.20 | 10 | 100 |
| 1/4" | 2MF3-B | 3/8" - 18 NPT | brass | | 2.05 | 52.0 | 0.87 | 22.0 | 13/16" | 0.20 | 10 | 100 |



| Body Size | M-Series ARO Interchange Nipple (Female Threads) | | | | | | | | | | | |
|-----------|--|----------------|----------|--|--------|------|------------|------|----------|-----------|-------------|-----|
| | Part Detail | | | | Length | | Maximum OD | | Hex Inch | Weight Lb | Package Qty | |
| | Part Number | Threads | Material | | Inch | mm | Inch | mm | | | Bag | Box |
| 1/4" | M2F2 | 1/4" - 18 NPTF | steel | | 1.57 | 39.9 | 0.79 | 20.1 | 11/16" | 0.04 | 10 | 100 |
| 1/4" | M2F2-B | 1/4" - 18 NPTF | brass | | 1.57 | 39.9 | 0.79 | 20.1 | 11/16" | 0.04 | 10 | 100 |
| 1/4" | M2F3 | 3/8" - 18 NPTF | steel | | 1.57 | 39.9 | 1.01 | 25.7 | 7/8" | 0.06 | 10 | 100 |
| 3/8" | M3F3 | 3/8" - 18 NPTF | steel | | 1.82 | 46.2 | 1.01 | 25.7 | 7/8" | 0.10 | 10 | 50 |

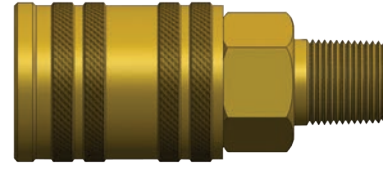
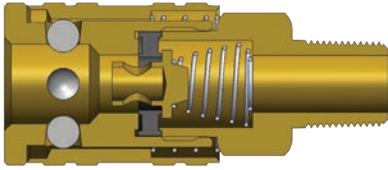


| Body Size | M-Series Automatic ARO Interchange Coupler (Male Threads) | | | | | | | | | | | |
|-----------|---|---------------|----------|--|--------|------|------------|------|----------|-----------|-------------|-----|
| | Part Detail | | | | Length | | Maximum OD | | Hex Inch | Weight Lb | Package Qty | |
| | Part Number | Threads | Material | | Inch | mm | Inch | mm | | | Bag | Box |
| 1/4" | 2MM2-PL | 1/4" - 18 NPT | steel | | 1.70 | 43.2 | 1.06 | 27.0 | 13/16" | 0.28 | 10 | 100 |
| 1/4" | 2MM3-PL | 3/8" - 18 NPT | steel | | 1.80 | 45.6 | 1.06 | 27.0 | 13/16" | 0.28 | 10 | 100 |
| 3/8" | 3MM3-PL | 3/8" - 18 NPT | steel | | 1.89 | 48.0 | 1.26 | 32.0 | 1-1/16" | 0.43 | 10 | 50 |

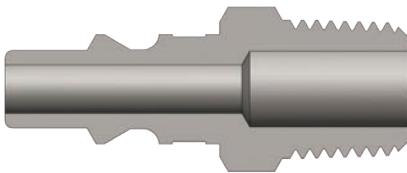
M Series Profile



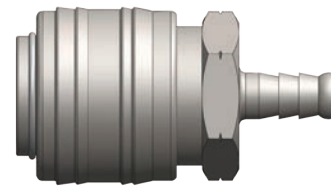
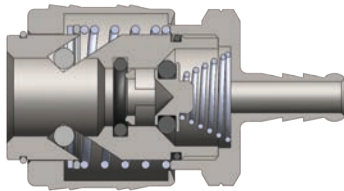
M-Series Pneumatic Couplings



| Body Size | M-Series Manual ARO Interchange Coupler (Male Threads) | | | | | | | | | | | |
|-----------|--|---------------|----------|--------|------|------------|------|----------|-----------|-------------|-----|--|
| | Part Detail | | | Length | | Maximum OD | | Hex Inch | Weight Lb | Package Qty | | |
| | Part Number | Threads | Material | Inch | mm | Inch | mm | | | Bag | Box | |
| 1/4" | 2MM2-B | 1/4" - 18 NPT | brass | 2.13 | 54.0 | 0.87 | 22.0 | 3/4" | 0.19 | 10 | 100 | |
| 1/4" | 2MM3-B | 3/8" - 18 NPT | brass | 2.13 | 54.0 | 0.87 | 22.0 | 13/16" | 0.20 | 10 | 100 | |

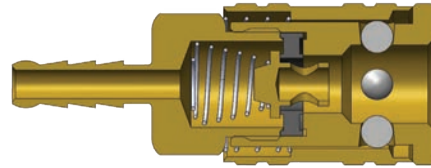
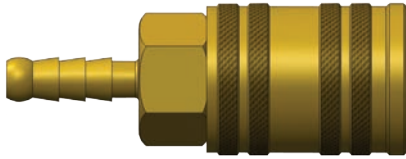


| Body Size | M-Series ARO Interchange Nipple (Male Threads) | | | | | | | | | | | |
|-----------|--|----------------|----------|--------|------|------------|------|----------|-----------|-------------|-----|--|
| | Part Detail | | | Length | | Maximum OD | | Hex Inch | Weight Lb | Package Qty | | |
| | Part Number | Threads | Material | Inch | mm | Inch | mm | | | Bag | Box | |
| 1/4" | M2M1 | 1/8" - 27 NPTF | steel | 1.48 | 37.6 | 0.58 | 14.7 | 1/2" | 0.04 | 10 | 100 | |
| 1/4" | M2M2 | 1/4" - 18 NPTF | steel | 1.60 | 40.6 | 0.65 | 16.5 | 9/16" | 0.05 | 10 | 100 | |
| 1/4" | M2M2-B | 1/4" - 18 NPTF | brass | 1.60 | 40.6 | 0.65 | 16.5 | 9/16" | 0.05 | 10 | 100 | |
| 1/4" | M2M3 | 3/8" - 18 NPTF | steel | 1.80 | 45.7 | 0.79 | 20.1 | 11/16" | 0.06 | 10 | 100 | |
| 3/8" | M3M3 | 3/8" - 18 NPTF | steel | 1.91 | 48.5 | 0.79 | 20.1 | 11/16" | 0.10 | 10 | 50 | |

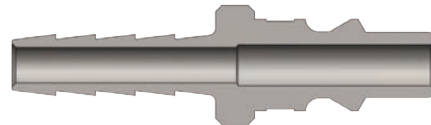
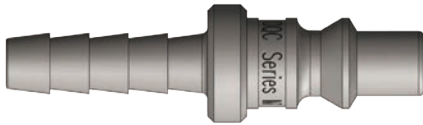


| Body Size | M-Series Automatic ARO Interchange Coupler (Standard Hose Barb) | | | | | | | | | | | |
|-----------|---|---------|----------|--------|------|------------|------|----------|-----------|-------------|-----|--|
| | Part Detail | | | Length | | Maximum OD | | Hex Inch | Weight Lb | Package Qty | | |
| | Part Number | Hose ID | Material | Inch | mm | Inch | mm | | | Bag | Box | |
| 1/4" | 2MS2-PL | 1/4" | steel | 1.91 | 48.6 | 1.06 | 27.0 | 13/16" | 0.28 | 10 | 100 | |
| 1/4" | 2MS2.5-PL | 5/16" | steel | 2.33 | 59.1 | 1.06 | 27.0 | 13/16" | 0.28 | 10 | 100 | |
| 1/4" | 2MS3-PL | 3/8" | steel | 2.50 | 63.6 | 1.06 | 27.0 | 13/16" | 0.30 | 10 | 100 | |
| 3/8" | 3MS3-PL | 3/8" | steel | 2.60 | 66.0 | 1.26 | 32.0 | 1-1/16" | 0.43 | 10 | 50 | |

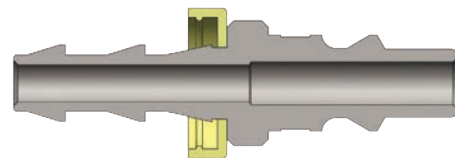
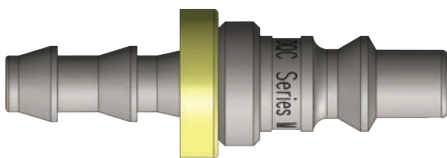
M-Series Pneumatic Couplings



| Body Size | M-Series Manual ARO Interchange Coupler (Standard Hose Barb) | | | | | | | | | | | |
|-----------|--|---------|----------|--|--------|------|------------|------|----------|-----------|-------------|-----|
| | Part Detail | | | | Length | | Maximum OD | | Hex Inch | Weight Lb | Package Qty | |
| | Part Number | Hose ID | Material | | Inch | mm | Inch | mm | | | Bag | Box |
| 1/4" | 2MS2-B | 1/4" | brass | | 2.36 | 60.0 | 0.87 | 22.0 | 3/4" | 0.20 | 10 | 100 |
| 1/4" | 2MS3-B | 3/8" | brass | | 2.76 | 70.0 | 0.87 | 22.0 | 13/16" | 0.20 | 10 | 100 |



| Body Size | M-Series ARO Interchange Nipple (Standard Hose Barb) | | | | | | | | | | | |
|-----------|--|---------|----------|--|--------|------|------------|------|----------|-----------|-------------|-----|
| | Part Detail | | | | Length | | Maximum OD | | Hex Inch | Weight Lb | Package Qty | |
| | Part Number | Hose ID | Material | | Inch | mm | Inch | mm | | | Bag | Box |
| 1/4" | M2S2 | 1/4" | steel | | 2.00 | 50.8 | 0.56 | 14.2 | - | 0.03 | 10 | 100 |
| 1/4" | M2S3 | 3/8" | steel | | 2.00 | 50.8 | 0.56 | 14.2 | - | 0.05 | 10 | 100 |
| 3/8" | M3S3 | 3/8" | steel | | 2.25 | 57.2 | 0.88 | 22.4 | - | 0.09 | 10 | 50 |



| Body Size | M-Series ARO Interchange Nipple (Push-Loc Barb) | | | | | | | | | | | |
|-----------|---|---------|----------|--|--------|------|------------|------|----------|-----------|-------------|-----|
| | Part Detail | | | | Length | | Maximum OD | | Hex Inch | Weight Lb | Package Qty | |
| | Part Number | Hose ID | Material | | Inch | mm | Inch | mm | | | Bag | Box |
| 1/4" | M2B2 | 1/4" | steel | | 2.09 | 53.1 | 0.69 | 17.5 | - | 0.03 | 10 | 100 |



Warning! It is important to be safe when installing quick disconnect couplings into a pneumatic circuit. Never install a pneumatic coupling directly into an air tool, use a piece of hose that is at least 18" long, between the tool and the coupling, to prevent damage to the coupling. To protect the operator, safety devices, such as a safety check valve and safety cable should be installed in case there is a hose or coupling failure.