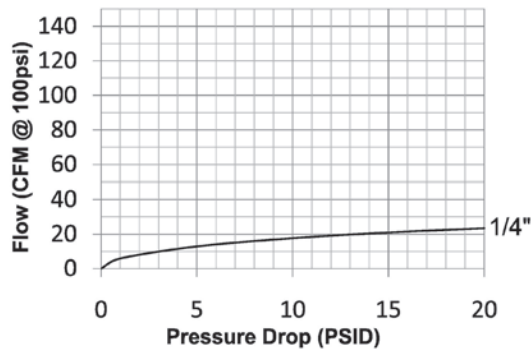


L-Series Pneumatic Couplings

Interchange Data:

- Lincoln Long-Nose Automotive Interchange
- Parker 70-Series, Tomco Series-1110, Coilhose Type-17



Materials:

- Machined components are manufactured using solid brass or steel bar stock.
- Stainless steel balls, retaining rings, and springs maximize corrosion resistance and extend service life.
- Steel componentry is plated using ROHS Compliant Trivalent Chrome.

Seal Components:

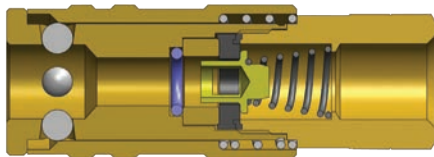
- Nitrile (Buna-N) seals are standard, providing a temperature range of -40°F to +250°F (-40°C to +121°C).

Rated Pressure Chart:

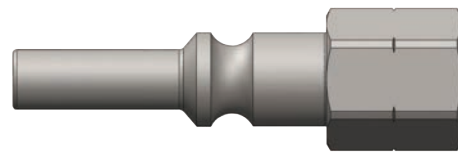
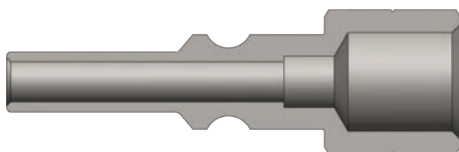
Body Size	L-Series Lincoln Interchange (Connected)			
	Brass Coupler/Steel Plug			
	Maximum Working		Burst	
	PSI	Bar	PSI	Bar
1/4"	300	21	5,000	345

Technical Specifications:

Body Size	Interchange Standards				Functional Parameters				
	U.S. Military	U.S. Government	International Standards	ANSI/NFPA Standards	Locking Ball Quantity	Air Inclusion	Fluid Loss	Vacuum Rating	Flow $\Delta P = 15 \text{ PSI}$
1/4"	-	-	-	-	4	N/A	N/A	N/R	21 CFM

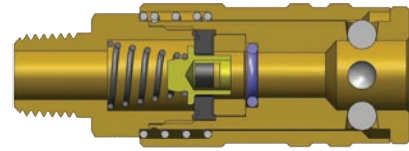


Body Size	L-Series Lincoln Interchange Coupler (Female Threads)										
	Part Detail			Length	Maximum OD		Hex Inch	Weight Lb	Package Qty		
	Part Number	Threads	Material		Inch	mm			Bag	Box	
1/4"	2LF2-B	1/4" - 18 NPT	brass	2.40	61.0	0.90	22.9	3/4"	0.26	10	100

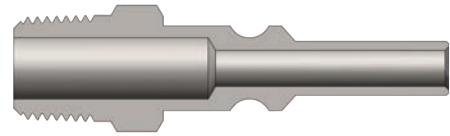
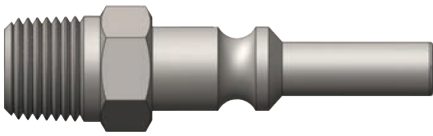


Body Size	L-Series Lincoln Interchange Nipple (Female Threads)										
	Part Detail			Length	Maximum OD		Hex Inch	Weight Lb	Package Qty		
	Part Number	Threads	Material		Inch	mm			Bag	Box	
1/4"	L2F2	1/4" - 18 NPT	steel	2.10	53.3	0.72	18.3	5/8"	0.05	10	100

L-Series Pneumatic Couplings



Body Size	L-Series Lincoln Interchange Coupler (Male Threads)											
	Part Detail				Length		Maximum OD		Hex Inch	Weight Lb	Package Qty	
	Part Number	Threads	Material		Inch	mm	Inch	mm			Bag	Box
1/4"	2LM2-B	1/4"-18 NPT	brass		2.62	66.5	0.90	22.9	3/4"	0.24	10	100



Body Size	L-Series Lincoln Interchange Nipple (Male Threads)											
	Part Detail				Length		Maximum OD		Hex Inch	Weight Lb	Package Qty	
	Part Number	Threads	Material		Inch	mm	Inch	mm			Bag	Box
1/4"	L2M2	1/4" - 18 NPT	steel		2.25	57.2	0.65	16.5	9/16"	0.06	10	100

L Series Profile



Warning! It is important to be safe when installing quick disconnect couplings into a pneumatic circuit. Never install a pneumatic coupling directly into an air tool, use a piece of hose that is at least 18" long, between the tool and the coupling, to prevent damage to the coupling. To protect the operator, safety devices, such as a safety check valve and safety cable should be installed in case there is a hose or coupling failure.