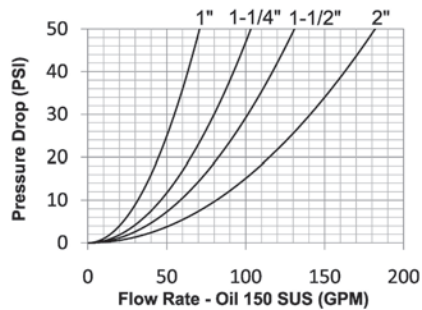
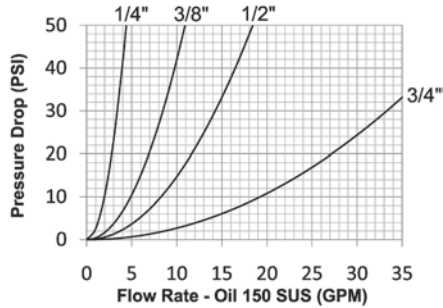


K-Series Hydraulic Couplings

Interchange Data:

- Interchangeable to ISO7241 Series 'A'
- Parker 6600-Series, Aeroquip/Eaton FD56 (5600)
- Faster ANV, Hansen HA15000, Safeway S56-Series



Materials:

- Machined components are manufactured using solid steel bar stock.
- Stainless steel balls, retaining rings, and springs maximize corrosion resistance and extend service life.
- Steel componentry is plated using ROHS Compliant Trivalent Chrome.
- Steel coupler sleeves are hardened to resist deformation and maximize service life.
- Steel nipples are hardened to provide heavy duty performance and resist brinelling.

Seal Components:

- Nitrile (Buna-N) seals are standard, providing a temperature range of -40°F to +250°F (-40°C to +121°C).
- Couplers have a PTFE Anti-Extrusion ring.
- Valve seals are crimped in place to maintain integrity during excessive flow conditions and pressurized connection.

Rated Pressure Chart:

Body Size	K-Series ISO-A Interchange (Connected)			
	Steel Coupler/Plug			
	Maximum Working		Burst	
	PSI	Bar	PSI	Bar
1/4"	5,000	345	18,270	1,200
3/8"	4,000	275	18,270	1,200
1/2"	4,000	275	16,500	1,100
3/4"	4,000	275	14,800	1,000
1"	4,000	275	12,400	850
1-1/4"	3,000	200	12,600	850
1-1/2"	3,000	200	12,600	850
2"	1,450	100	5,800	400

Technical Specifications:

Body Size	Interchange Standards				Functional Parameters				
	U.S. Military	U.S. Government	International Standards	ANSI/NFPA Standards	Locking Ball Quantity	Air Inclusion	Fluid Loss	Vacuum Inch HG	Flow ΔP = 22 PSI
1/4"	-	-	ISO7241 'A'	B93.113M-A	6	0.6cc	0.3cc	26.5	2.9 GPM
3/8"	-	-	ISO7241 'A'	B93.113M-A	9	2.6cc	1.8cc	26.5	7 GPM
1/2"	-	-	ISO7241 'A'	B93.113M-A	9	3.8cc	2.9cc	26.5	12 GPM
3/4"	-	-	ISO7241 'A'	B93.113M-A	12	10.8cc	9.7cc	26.5	28 GPM
1"	-	-	ISO7241 'A'	B93.113M-A	15	15.9cc	15.3cc	26.5	50 GPM
1-1/4"	-	-	ISO7241 'A'	B93.113M-A	16	31.7cc	29.1cc	26.5	70 GPM
1-1/2"	-	-	ISO7241 'A'	B93.113M-A	16	56.4cc	52.2cc	26.5	90 GPM
2"	-	-	ISO7241 'A'	B93.113M-A	15	N/A	N/A	26.5	120 GPM

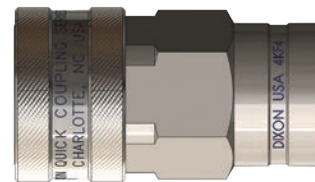
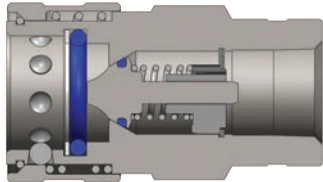
K-Series Hydraulic Couplings

List Price Seal Option Adders:

Body Size	Standard Seal Options												Kalrez® Seal Options					
	Viton®		EPDM		FDA Viton®		Mil-Nitrile		Fuel Nitrile		Silicone		4079		6375		7075	
	Pre	Add \$	Pre	Add \$	Pre	Add \$	Pre	Add \$	Pre	Add \$	Pre	Add \$	Pre	Add \$	Pre	Add \$	Pre	Add \$
1/4"	F-	\$0.00	P-		D-		M-		JF-		S-		K4-	POR	K6-	POR	K7-	POR
3/8"	F-	.00	P-		D-		M-		JF-		S-		K4-	POR	K6-	POR	K7-	POR
1/2"	F-	.00	P-		D-		M-		JF-		S-		K4-	POR	K6-	POR	K7-	POR
3/4"	F-	.00	P-		D-		M-		JF-		S-		K4-	POR	K6-	POR	K7-	POR
1"	F-	.00	P-		D-		M-		JF-		S-		K4-	POR	K6-	POR	K7-	POR
1-1/4"	F-	N/A	P-	N/A	D-	N/A	M-	N/A	JF-	N/A	S-	N/A	K4-	N/A	K6-	N/A	K7-	N/A
1-1/2"	F-	N/A	P-	N/A	D-	N/A	M-	N/A	JF-	N/A	S-	N/A	K4-	N/A	K6-	N/A	K7-	N/A
2"	F-	N/A	P-	N/A	D-	N/A	M-	N/A	JF-	N/A	S-	N/A	K4-	N/A	K6-	N/A	K7-	N/A

List Price Option Adders:

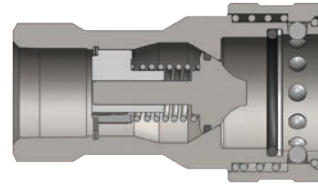
Body Size	Valve Options												Sleeve		Treatments	
	Unvalved		Actuator		Steel		Brass		303 SS		316 SS		Locking		Oxy-Clean	
	Suf	Add \$	Suf	Add \$	Suf	Add \$	Suf	Add \$	Suf	Add \$	Suf	Add \$	Suf	Add \$	Suf	Add \$
1/4"	-E	-\$1.50	-VA	N/A	-ZV	Std.	-BV	\$0.00	-SV	N/A	SSV	N/A	-LS	\$4.80	-C1	\$12.00
3/8"	-E	-2.30	-VA	\$4.30	-ZV	Std.	-BV	.00	-SV	\$2.45	SSV	\$2.70	-LS	4.80	-C1	12.00
1/2"	-E	-4.60	-VA	6.20	-ZV	Std.	-BV	.00	-SV	4.30	SSV	4.80	-LS	4.80	-C1	14.00
3/4"	-E	-5.80	-VA	8.00	-ZV	Std.	-BV	.00	-SV	5.65	SSV	6.00	-LS	6.00	-C1	14.00
1"	-E	-8.50	-VA	12.00	-ZV	Std.	-BV	.00	-SV	7.50	SSV	8.80	-LS	9.80	-C1	16.00
1-1/4"	-E	N/A	-VA	N/A	-ZV	Std.	-BV	N/A	-SV	N/A	SSV	N/A	-LS	N/A	-C1	N/A
1-1/2"	-E	N/A	-VA	N/A	-ZV	Std.	-BV	N/A	-SV	N/A	SSV	N/A	-LS	N/A	-C1	N/A
2"	-E	N/A	-VA	N/A	-ZV	Std.	-BV	N/A	-SV	N/A	SSV	N/A	-LS	N/A	-C1	N/A



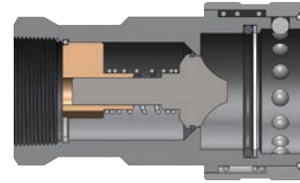
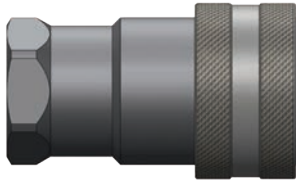
K-Series ISO-A Interchange Coupler (Female Threads)

Body Size	Part Detail				Length		Maximum OD		Hex Inch	Weight Lb	Package Qty	
	Part Number	Threads	Material		Inch	mm	Inch	mm			Bag	Box
1/4"	2KF1	1/8" - 27 NPTF	steel	1.76	44.7	1	25.4	3/4"	0.27	10	50	
1/4"	2KF2	1/4" - 18 NPTF	steel	1.76	44.7	1	25.4	3/4"	0.26	10	50	
1/4"	2KBF2	1/4" - 19 BSPP	steel	1.76	44.7	1	25.4	3/4"	0.26	10	50	
1/4"	2KOF2	7/16" - 20 ORB	steel	1.76	44.7	1	25.4	3/4"	0.25	10	50	
3/8"	3KF3	3/8" - 18 NPTF	steel	2.23	56.6	1.23	31.2	1"	0.39	10	50	
3/8"	3KBF3	3/8" - 19 BSPP	steel	2.23	56.6	1.23	31.2	1"	0.38	10	50	
3/8"	3KOF3	9/16" - 18 ORB	steel	2.23	56.6	1.23	31.2	1"	0.39	10	50	
1/2"	4KF4	1/2" - 14 NPTF	steel	2.62	66.5	1.49	37.8	1-1/4"	0.67	5	25	
1/2"	4KBF4	1/2" - 14 BSPP	steel	2.62	66.5	1.49	37.8	1-1/4"	0.67	5	25	
1/2"	4KOF4	3/4" - 16 ORB	steel	2.62	66.5	1.49	37.8	1-1/4"	0.69	5	25	
1/2"	4KOF5	7/8" - 14 ORB	steel	2.62	66.5	1.49	37.8	1-1/4"	0.66	5	25	
1/2"	4KF6	3/4" - 14 NPTF	steel	2.62	66.5	1.49	37.8	1-1/4"	0.71	5	25	
1/2"	4KBF6	3/4" - 14 BSPP	steel	2.62	66.5	1.49	37.8	1-1/4"	0.71	5	25	

K-Series Hydraulic Couplings

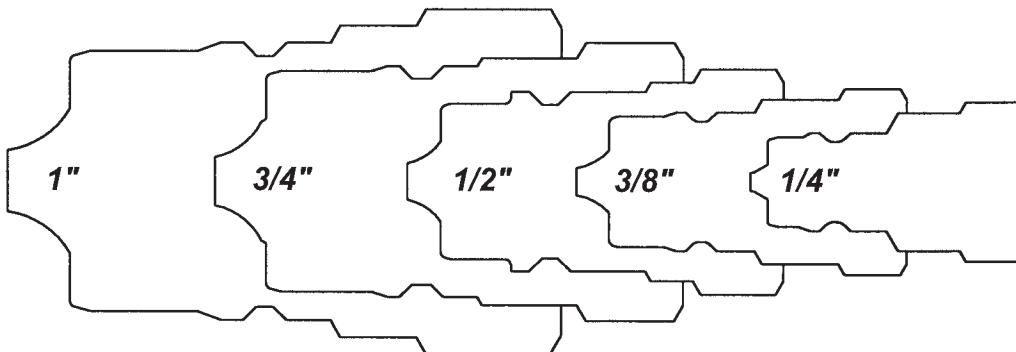


Body Size	K-Series ISO-A Interchange Coupler (Female Threads)											
	Part Detail				Length		Maximum OD		Hex Inch	Weight Lb	Package Qty	
	Part Number	Threads	Material		Inch	mm	Inch	mm			Bag	Box
3/4"	6KF6	3/4" - 14 NPTF	steel		3.23	82.0	1.86	47.2	1-5/16"	1.90	-	10
3/4"	6KBF6	3/4" - 14 BSPP	steel		3.23	82.0	1.86	47.2	1-5/16"	1.90	-	10
3/4"	6KOF6	1-1/16" - 12 ORB	steel		3.23	82.0	1.86	47.2	1-5/16"	1.90	-	10
1"	8KF8	1" - 11 1/2 NPTF	steel		3.88	98.6	2.10	53.3	1-5/8"	2.14	-	10
1"	8KBF8	1" - 11 BSPP	steel		3.88	98.6	2.10	53.3	1-5/8"	2.14	-	10
1"	8KOF8	1-5/16" - 12 ORB	steel		3.88	98.6	2.10	53.3	1-5/8"	2.14	-	10

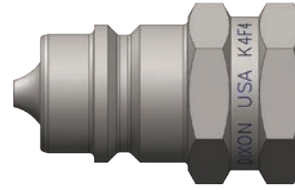
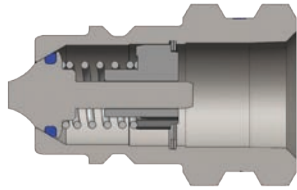


Body Size	K-Series ISO-A Interchange Coupler (Female Threads)											
	Part Detail				Length		Maximum OD		Hex Inch	Weight Lb	Package Qty	
	Part Number	Threads	Material		Inch	mm	Inch	mm			Bag	Box
1-1/4"	10KF10	1-1/4" - 11 1/2 NPT	steel		4.61	117.0	2.76	70.0	2"	2.93	-	10
1-1/4"	10KBF10	1-1/4" - 11 BSPP	steel		4.61	117.0	2.76	70.0	2"	2.93	-	10
1-1/2"	12KF12	1-1/2" - 11 1/2 NPT	steel		5.24	133.0	3.33	84.5	2-3/8"	4.78	-	1
1-1/2"	12KBF12	1-1/2" - 11 BSPP	steel		5.24	133.0	3.33	84.5	2-3/8"	4.78	-	1
2"	16KF16	2" - 11 1/2 NPT	steel		6.50	165.0	3.94	100.0	3"	8.49	-	1
2"	16KBF16	2" - 11 BSPP	steel		6.50	165.0	3.94	100.0	3"	8.49	-	1

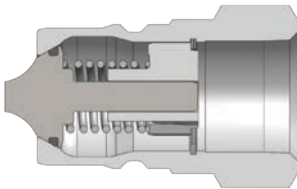
K Profiles



K-Series Hydraulic Couplings



Body Size	K-Series ISO-A Interchange Nipple (Female Threads)											
	Part Detail				Length		Maximum OD		Hex Inch	Weight Lb	Package Qty	
	Part Number	Threads	Material		Inch	mm	Inch	mm			Bag	Box
1/4"	K2F1	1/8" - 27 NPTF	steel		1.22	31.0	0.87	22.1	3/4"	0.08	10	50
1/4"	K2F2	1/4" - 18 NPTF	steel		1.22	31.0	0.87	22.1	3/4"	0.07	10	50
1/4"	K2BF2	1/4" - 19 BSPP	steel		1.22	31.0	0.87	22.1	3/4"	0.07	10	50
1/4"	K2OF2	7/16" - 20 ORB	steel		1.22	31.0	0.87	22.1	3/4"	0.08	10	50
3/8"	K3F3	3/8" - 18 NPTF	steel		1.70	43.2	0.97	24.6	7/8"	0.11	10	50
3/8"	K3BF3	3/8" - 19 BSPP	steel		1.70	43.2	0.97	24.6	7/8"	0.11	10	50
3/8"	K3OF3	9/16" - 18 ORB	steel		1.70	43.2	0.97	24.6	7/8"	0.13	10	50
1/2"	K4F4	1/2" - 14 NPTF	steel		1.77	45.0	1.23	31.2	1-1/16"	0.21	5	25
1/2"	K4BF4	1/2" - 14 BSPP	steel		1.77	45.0	1.23	31.2	1-1/16"	0.21	5	25
1/2"	K4OF4	3/4" - 16 ORB	steel		1.77	45.0	1.23	31.2	1-1/16"	0.22	5	25
1/2"	K4OF5	7/8" - 14 ORB	steel		1.77	45.0	1.23	31.2	1-1/16"	0.21	5	25
1/2"	K4F6	3/4" - 14 NPTF	steel		1.77	45.0	1.37	34.8	1-3/16"	0.33	5	25
1/2"	K4BF6	3/4" - 14 BSPP	steel		1.77	45.0	1.37	34.8	1-3/16"	0.33	5	25



Body Size	K-Series ISO-A Interchange Nipple (Female Threads)											
	Part Detail				Length		Maximum OD		Hex Inch	Weight Lb	Package Qty	
	Part Number	Threads	Material		Inch	mm	Inch	mm			Bag	Box
3/4"	K6F6	3/4" - 14 NPTF	steel		2.43	61.7	1.44	36.6	1-5/16"	0.49	-	10
3/4"	K6BF6	3/4" - 14 BSPP	steel		2.43	61.7	1.44	36.6	1-5/16"	0.49	-	10
3/4"	K6OF6	1-1/16" - 12 ORB	steel		2.43	61.7	1.44	36.6	1-5/16"	0.47	-	10
1"	K8F8	1" - 11 1/2 NPTF	steel		2.87	72.9	1.79	45.5	1-5/8"	0.75	-	10
1"	K8BF8	1" - 11 BSPP	steel		2.87	72.9	1.79	45.5	1-5/8"	0.75	-	10
1"	K8OF8	1-5/16" - 12 ORB	steel		2.87	72.9	1.79	45.5	1-5/8"	0.72	-	10
1-1/4"	K10F10	1-1/4" - 11 1/2 NPT	steel		2.95	75.0	2.31	58.7	2"	1.26	-	10
1-1/4"	K10BF10	1-1/4" - 11 BSPP	steel		2.95	75.0	2.31	58.7	2"	1.26	-	10
1-1/2"	K12F12	1-1/2" - 11 1/2 NPT	steel		3.29	83.5	2.74	69.6	2-3/8"	2.05	-	1
1-1/2"	K12BF12	1-1/2" - 11 BSPP	steel		3.29	83.5	2.74	69.6	2-3/8"	2.05	-	1
2"	K16F16	2" - 11 1/2 NPT	steel		4.13	105.0	3.46	87.9	3"	3.64	-	1
2"	K16BF16	2" - 11 BSPP	steel		4.13	105.0	3.46	87.9	3"	3.64	-	1

K-Series Hydraulic Couplings



Body Size	K-Series ISO-A Interchange Dust Caps and Dust Plugs					
	Part Detail				Package Qty	
	Coupler Dust Plug	Nipple Dust Cap	Material		Bag	Box
1/4"	2KDP-K2DC	2KDP-K2DC	Nitrile		10	50
3/8"	3KDP-K3DC	3KDP-K3DC	Nitrile		10	50
1/2"	See Below	See Below				
3/4"	6KDP-K6DC	6KDP-K6DC	Nitrile		5	25
1"	8KDP-K8DC	8KDP-K8DC	Nitrile		5	25



Body Size	K-Series ISO-A Interchange Color Coded Dust Plug					
	Part Detail				Package Qty	
	Part Number	Color	Material		Bag	Box
1/2"	4KDP	Black	Nitrile		10	50
1/2"	4K-R-DP	Red	Nitrile		10	50
1/2"	4K-O-DP	Orange	Nitrile		10	50
1/2"	4K-Y-DP	Yellow	Nitrile		10	50
1/2"	4K-G-DP	Green	Nitrile		10	50
1/2"	4K-B-DP	Blue	Nitrile		10	50



Body Size	K-Series ISO-A Interchange Color Coded Dust Cap					
	Part Detail				Package Qty	
	Part Number	Color	Material		Bag	Box
1/2"	K4DC	Black	Nitrile		10	50
1/2"	K4-R-DC	Red	Nitrile		10	50
1/2"	K4-O-DC	Orange	Nitrile		10	50
1/2"	K4-Y-DC	Yellow	Nitrile		10	50
1/2"	K4-G-DC	Green	Nitrile		10	50
1/2"	K4-B-DC	Blue	Nitrile		10	50

Body Size	K-Series ISO-A Coupler Seal Kits						
	Part Detail			Seal Kit Contents	Package Qty		
	Part Number	Coupler Style	Seal Material		Bag	Box	
1/4"	2K-SKIT	all	Nitrile	O-Ring and PTFE Anti-Extrusion Ring	25	200	
3/8"	3K-SKIT	all	Nitrile	O-Ring and PTFE Anti-Extrusion Ring	25	200	
1/2"	4K-SKIT	all	Nitrile	O-Ring and PTFE Anti-Extrusion Ring	25	200	
3/4"	6K-SKIT	all	Nitrile	O-Ring and PTFE Anti-Extrusion Ring	25	200	
1"	8K-SKIT	all	Nitrile	O-Ring and PTFE Anti-Extrusion Ring	25	200	
1-1/4"	10K-SKIT	all	Nitrile	O-Ring and PTFE Anti-Extrusion Ring	10	50	
1-1/2"	12K-SKIT	all	Nitrile	O-Ring and PTFE Anti-Extrusion Ring	10	50	
2"	16K-SKIT	all	Nitrile	O-Ring and PTFE Anti-Extrusion Ring	10	50	