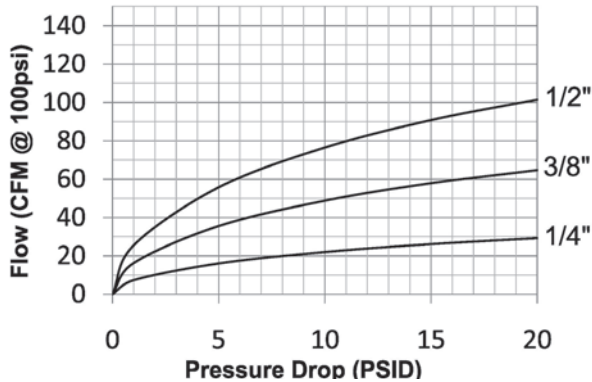


J-Series Pneumatic Couplings

Interchange Data:

- Truflate Automotive interchange style
- Parker 10-Series
- Rectus 55KM
- Tomco A2100/PT400



Materials:

- Machined components are manufactured using solid steel or brass bar stock.
- Stainless steel balls, retaining rings, and springs maximize corrosion resistance and extend service life.
- Steel componentry is plated using ROHS Compliant Trivalent Chrome.
- 1/4" couplers constructed of brass with steel sleeve and steel tubular valve as standard
- 3/8" and 1/2" couplers constructed of steel as standard with steel tubular valves.

Seal Components:

- Nitrile (Buna-N) seals are standard providing a temperature range of -40°F to +250°F (-40°C to +121°C).

Rated Pressure Chart:

Body Size	J-Series Truflate Interchange (Connected)															
	Brass Coupler/Steel Plug				Brass Coupler/Plug				Steel Coupler/Plug				303 Stainless Coupler/Plug			
	Max. Working		Burst		Max. Working		Burst		Max. Working		Burst		Max. Working		Burst	
	PSI	Bar	PSI	Bar	PSI	Bar	PSI	Bar	PSI	Bar	PSI	Bar	PSI	Bar	PSI	Bar
1/4"	500	35	11,500	793	300	20	10,500	724	-	-	-	-	-	-	-	-
3/8"	-	-	-	-	-	-	-	-	500	35	18,000	1,241	-	-	-	-
1/2"	-	-	-	-	-	-	-	-	500	35	10,000	690	-	-	-	-

Technical Specifications:

Body Size	Interchange Standards				Functional Parameters					
	U.S. Military	U.S. Government	International Standards	ANSI/NFPA Standards	Locking Ball Quantity	Air Inclusion	Fluid Loss	Vacuum Rating	Flow ΔP = 15 PSI	
1/4"	-	-	-	-	6	N/A	N/A	N/R	26 CFM	
3/8"	-	-	-	-	6	N/A	N/A	N/R	58 CFM	
1/2"	-	-	-	-	6	N/A	N/A	N/A	91 CFM	

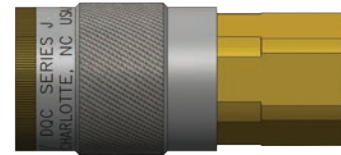
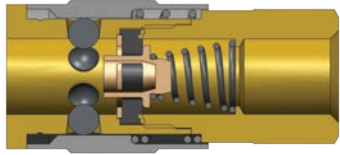
List Price Seal Option Adders:

Body Size	Seal Options				Valve Options					Sleeve Options						Treatments				
	Viton®		EPDM		Unvalved		Brass		303 SS	Flanged		Sleeve-Lock		Brass		303 SS		Oxy-Clean		
	Pre	Add \$	Pre	Add \$	Suf	Add \$	Suf	Add \$	Suf	Add \$	Suf	Add \$	Suf	Add \$	Suf	Add \$	Suf	Add \$	Suf	Add \$
1/4"	F-		P-		-E		-BV		-SV		-FS	N/A	-LS		-BS		-XS		-C1	
3/8"	F-		P-	N/A	-E		-BV		-SV		-FS	N/A	-LS		-BS	N/A	-XS		-C1	
1/2"	F-		P-	N/A	-E		-BV		-SV		-FS	N/A	-LS		-BS	N/A	-XS		-C1	
3/4"	F-		P-	N/A	-E		-BV	N/A	-SV	N/A	-FS	N/A	-LS		-BS	std.	-XS	N/A	-C1	

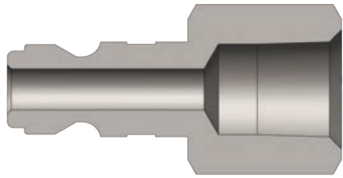


Operating pressure for couplings utilizing hose barb end connections may be dramatically reduced to that of the hose rating and/or hose end connection combination. Consult hose manufacturer's catalog for hose end connection ratings. If in doubt, test under controlled conditions for suitability to application. Dixon Quick Coupling cannot assume liability for misapplication of production resulting in equipment down-time, lost production, and/or personal injury including death.

J-Series Pneumatic Couplings

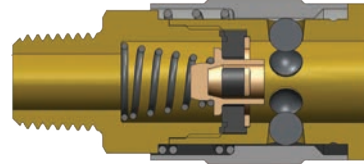
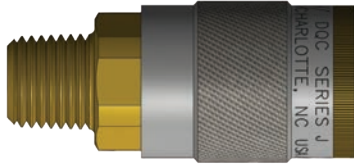


Body Size	J-Series Truflate Interchange Coupler (Female Threads)											
	Part Detail			Length		Maximum OD		Hex Inch	Weight Lb	Package Qty		
	Part Number	Threads	Material	Inch	mm	Inch	mm			Bag	Box	
1/4"	2JF1-B	1/8" - 27 NPTF	brass	1.83	46.5	0.88	22.4	3/4"	0.19	10	100	
1/4"	2JF2-B	1/4" - 18 NPTF	brass	2.04	51.8	0.88	22.4	3/4"	0.19	10	100	
1/4"	2JF3-B	3/8" - 18 NPTF	brass	2.14	54.4	0.88	22.4	13/16"	0.20	10	100	
3/8"	3JF2	1/4" - 18 NPTF	steel	2.25	57.2	1.06	26.9	7/8"	0.30	10	50	
3/8"	3JF3	3/8" - 18 NPTF	steel	2.48	63.0	1.06	26.9	7/8"	0.29	10	50	
3/8"	3JF4	1/2" - 14 NPTF	steel	2.61	66.3	1.06	26.9	1"	0.46	10	50	
1/2"	4FF3	3/8" - 18 NPTF	steel	2.85	72.5	1.24	31.4	1"	0.46	5	30	
1/2"	4FF4	1/2" - 14 NPTF	steel	3.06	77.8	1.24	31.4	1"	0.56	5	30	
1/2"	4FF6	3/4" - 14 NPTF	steel	3.15	79.9	1.24	31.4	1-3/16"	0.63	5	30	

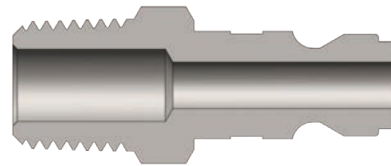


Body Size	J-Series Truflate Interchange Nipple (Female Threads)											
	Part Detail			Length		Maximum OD		Hex Inch	Weight Lb	Package Qty		
	Part Number	Threads	Material	Inch	mm	Inch	mm			Bag	Box	
1/4"	J2F1	1/8" - 27 NPTF	steel	1.34	34.0	0.65	16.5	9/16"	0.05	10	100	
1/4"	J2F2	1/4" - 18 NPTF	steel	1.56	39.6	0.79	20.1	11/16"	0.05	10	100	
1/4"	J2F2-B	1/4" - 18 NPTF	brass	1.56	39.6	0.79	20.1	11/16"	0.05	10	100	
1/4"	J2F3	3/8" - 18 NPTF	steel	1.56	39.6	1.01	25.7	7/8"	0.07	10	100	
3/8"	J3F2	1/4" - 18 NPTF	steel	1.75	44.5	0.79	20.1	11/16"	0.07	10	50	
3/8"	J3F3	3/8" - 18 NPTF	steel	1.75	44.5	1.01	25.7	7/8"	0.10	10	50	
3/8"	J3F4	1/2" - 14 NPTF	steel	1.91	48.5	1.16	29.5	1"	0.12	10	50	
1/2"	J4F3	3/8" - 18 NPTF	steel	2.11	53.6	1.01	25.7	7/8"	0.13	10	50	
1/2"	J4F4	1/2" - 14 NPTF	steel	2.26	57.4	1.16	29.5	1"	0.18	10	50	
1/2"	J4F6	3/4" - 14 NPTF	steel	2.31	58.7	1.37	34.8	1-3/16"	0.26	10	50	

J-Series Pneumatic Couplings

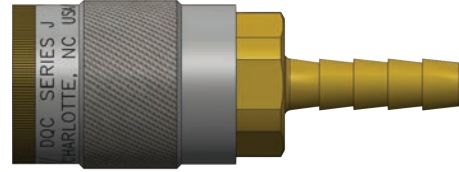
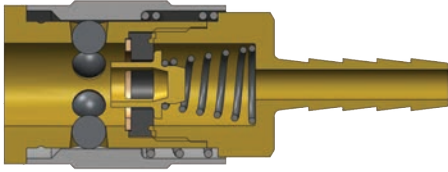


Body Size	J-Series Truflate Interchange Coupler (Male Threads)											
	Part Detail				Length		Maximum OD		Hex Inch	Weight Lb	Package Qty	
	Part Number	Threads	Material		Inch	mm	Inch	mm			Bag	Box
1/4"	2JM1-B	1/8" - 27 NPTF	brass		1.88	47.8	0.88	22.4	3/4"	0.17	10	100
1/4"	2JM2-B	1/4" - 18 NPTF	brass		2.047	52.0	0.88	22.4	3/4"	0.18	10	100
1/4"	2JM3-B	3/8" - 18 NPTF	brass		2.08	52.8	0.88	22.4	3/4"	0.19	10	100
3/8"	3JM2	1/4" - 18 NPTF	steel		2.45	62.2	1.06	26.9	7/8"	0.26	10	50
3/8"	3JM3	3/8" - 18 NPTF	steel		2.46	62.5	1.06	26.9	7/8"	0.27	10	50
3/8"	3JM4	1/2" - 14 NPTF	steel		2.55	64.8	1.06	26.9	7/8"	0.28	10	50
1/2"	4FM3	3/8" - 18 NPTF	steel		2.97	75.4	1.19	30.2	1"	0.42	5	30
1/2"	4FM4	1/2" - 14 NPTF	steel		3.07	78.0	1.19	30.2	1"	0.45	5	30
1/2"	4FM6	3/4" - 14 NPTF	steel		3.12	79.2	1.19	30.2	1-1/16"	0.50	5	30

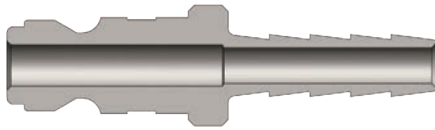


Body Size	J-Series Truflate Interchange Nipple (Male Threads)											
	Part Detail				Length		Maximum OD		Hex Inch	Weight Lb	Package Qty	
	Part Number	Threads	Material		Inch	mm	Inch	mm			Bag	Box
1/4"	J2M1	1/8" - 27 NPTF	steel		1.47	37.3	0.58	14.7	1/2"	0.04	10	100
1/4"	J2M2	1/4" - 18 NPTF	steel		1.59	40.4	0.65	16.5	9/16"	0.05	10	100
1/4"	J2M2-B	1/4" - 18 NPTF	brass		1.59	40.4	0.65	16.5	9/16"	0.06	10	100
1/4"	J2M3	3/8" - 18 NPTF	steel		1.65	41.9	0.79	20.1	11/16"	0.05	10	100
3/8"	J3M2	1/4" - 18 NPTF	steel		1.78	45.2	0.79	20.1	11/16"	0.08	10	50
3/8"	J3M3	3/8" - 18 NPTF	steel		1.84	46.7	0.79	20.1	11/16"	0.09	10	50
3/8"	J3M4	1/2" - 14 NPTF	steel		2	50.8	1.01	25.7	7/8"	0.12	10	50
1/2"	J4M3	3/8" - 18 NPTF	steel		2.2	55.9	0.79	20.1	11/16"	0.13	10	50
1/2"	J4M4	1/2" - 14 NPTF	steel		2.35	59.7	1.01	25.7	7/8"	0.17	10	50
1/2"	J4M6	3/4" - 14 NPTF	steel		2.51	63.8	1.23	31.2	1-1/16"	0.24	10	50

J-Series Pneumatic Couplings

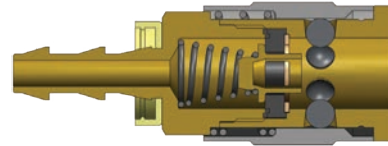
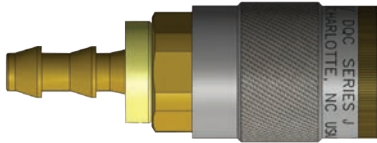


Body Size	J-Series Truflate Interchange Coupler (Standard Hose Barb)											
	Part Detail				Length		Maximum OD		Hex Inch	Weight Lb	Package Qty	
	Part Number	Hose ID	Material		Inch	mm	Inch	mm			Bag	Box
1/4"	2JS2-B	1/4"	brass		2.53	64.3	0.88	22.4	3/4"	0.18	10	100
1/4"	2JS3-B	3/8"	brass		2.53	64.3	0.88	22.4	3/4"	0.18	10	100
3/8"	3JS2	1/4"	steel		2.86	72.6	1.06	26.9	7/8"	0.27	10	50
3/8"	3JS3	3/8"	steel		2.86	72.6	1.06	26.9	7/8"	0.26	10	50
3/8"	3JS4	1/2"	steel		2.86	72.6	1.06	26.9	7/8"	0.27	10	50
1/2"	4FS3	3/8"	steel		3.49	88.6	1.19	30.2	1"	0.41	5	30
1/2"	4FS4	1/2"	steel		3.49	88.6	1.19	30.2	1"	0.43	5	30
1/2"	4FS6	3/4"	steel		3.49	88.6	1.19	30.2	1"	0.48	5	30

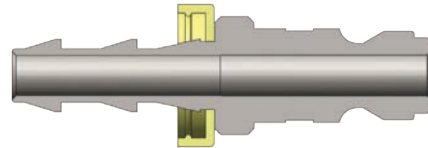
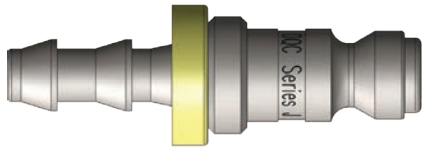


Body Size	J-Series Truflate Interchange Nipple (Standard Hose Barb)											
	Part Detail				Length		Maximum OD		Hex Inch	Weight Lb	Package Qty	
	Part Number	Hose ID	Material		Inch	mm	Inch	mm			Bag	Box
1/4"	J2S2	1/4"	steel		1.99	50.5	0.56	14.2	-	0.04	10	100
1/4"	J2S3	3/8"	steel		1.99	50.5	0.56	14.2	-	0.05	10	100
3/8"	J3S2	1/4"	steel		2.18	55.4	0.75	19.1	-	0.08	10	50
3/8"	J3S3	3/8"	steel		2.18	55.4	0.75	19.1	-	0.07	10	50
3/8"	J3S4	1/2"	steel		2.18	55.4	0.75	19.1	-	0.10	10	50
1/2"	J4S3	3/8"	steel		2.54	64.5	0.75	19.1	-	0.08	10	50
1/2"	J4S4	1/2"	steel		2.54	64.5	0.75	19.1	-	0.11	10	50
1/2"	J4S6	3/4"	steel		2.54	64.5	0.94	23.9	-	0.18	10	50

J-Series Pneumatic Couplings



Body Size	J-Series Truflate Interchange Coupler (Push-Loc Barb)											
	Part Detail				Length		Maximum OD		Hex Inch	Weight Lb	Package Qty	
	Part Number	Hose ID	Material		Inch	mm	Inch	mm			Bag	Box
1/4"	2JB2-B	1/4"	brass		2.37	60.2	0.88	22.4	3/4"	0.19	10	100
1/4"	2JB3-B	3/8"	brass		2.49	63.2	0.88	22.4	3/4"	0.18	10	100
3/8"	3JB2	1/4"	steel		2.8	71.1	1.06	26.9	7/8"	0.25	10	50
3/8"	3JB3	3/8"	steel		2.8	71.1	1.06	26.9	7/8"	0.27	10	50
3/8"	3JB4	1/2"	steel		2.8	71.1	1.06	26.9	7/8"	0.28	10	50
1/2"	4FB3	3/8"	steel		3.4	86.4	1.19	30.2	1"	0.40	5	30
1/2"	4FB4	1/2"	steel		3.4	86.4	1.19	30.2	1"	0.43	5	30



Body Size	J-Series Truflate Interchange Nipple (Push-Loc Barb)											
	Part Detail				Length		Maximum OD		Hex Inch	Weight Lb	Package Qty	
	Part Number	Hose ID	Material		Inch	mm	Inch	mm			Bag	Box
1/4"	J2B2	1/4"	steel		2.09	53.1	0.69	17.5	-	0.04	10	100
1/4"	J2B3	3/8"	steel		2.09	53.1	0.86	21.8	-	0.05	10	100
3/8"	J3B3	3/8"	steel		2.21	56.1	0.75	19.1	-	0.08	10	50
1/2"	J4B4	1/2"	steel		2.67	67.8	0.75	19.1	-	0.11	10	50

J Series Profile

