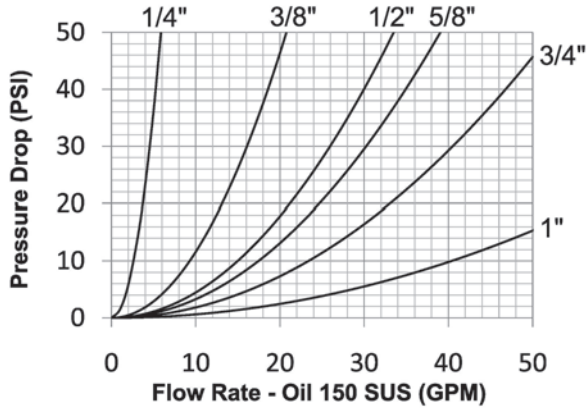


# HT-Series Hydraulic Couplings

## Interchange Data:

- Interchangeable to ISO16028
- Parker FEM-Series, Snap-Tite 74-Series, Hansen FF, Aeroquip/Eaton FD89, Stucchi FIRG/Series 'A', FASTER FFN/FFI/2FFN/2FFI, Safeway FF49-Series



## Materials:

- Machined components are manufactured using solid steel or 316 stainless steel bar stock.
- Stainless steel balls, retaining rings, and springs maximize corrosion resistance and extend service life.
- Steel componentry is plated using ROHS Compliant Trivalent Chrome.
- Steel coupler sleeves are hardened to resist deformation and maximize service life.
- Steel nipples are hardened to provide resistance to brinelling during impulse service.

## Seal Components:

- 1/4" to 3/4" nipples have molded Polyurethane valve seals, with a temperature range of -65°F to +212°F (-54°C to +100°C).
- 1" nipples have Nitrile-Energized PTFE valve seals, with a temperature range of -40°F to +250°F (-40°C to +121°C).
- Couplers have a polyurethane valve stem O-Ring, with a temperature range of -65°F to +212°F (-54°C to +100°C).
- Ancillary coupler and nipple seals are Nitrile (Buna-N), temperature range of -40°F to +250°F (-40°C to +121°C).
- PTFE Anti-Extrusion ring protects main coupling valve seal from dynamic impulse pressure damage.

## Rated Pressure Chart:

Body Size	HT-Series ISO16028 Flushface															
	Steel Coupler/Plug Coupled				316SS Coupler/Plug Coupled				Steel Coupler Uncoupled				Steel Plug Uncoupled			
	Max. Working		Burst		Max. Working		Burst		Max. Working		Burst		Max. Working		Burst	
	PSI	Bar	PSI	Bar	PSI	Bar	PSI	Bar	PSI	Bar	PSI	Bar	PSI	Bar	PSI	Bar
1/4"	4575	316	18,300	1262	-	-	-	-	4575	316	18,300	1262	4575	316	18,300	1262
3/8"	4375	302	17,500	1207	3500	241	17,500	1207	4375	302	17,500	1207	4375	302	17,500	1207
1/2"	4250	293	17,000	1172	3400	234	17,000	1172	4250	293	17,000	1172	4250	293	17,000	1172
5/8"	3650	252	14,600	1007	2920	201	14,600	1007	3650	252	14,600	1007	3650	252	14,600	1007
3/4"	3650	252	14,600	1007	2920	201	14,600	1007	3650	252	14,600	1007	3650	252	14,600	1007
1"	3650	252	14,600	1007	2920	201	14,600	1007	3650	252	14,600	1007	3650	252	14,600	1007

## Technical Specifications:

Body Size	Interchange Standards				Functional Parameters				
	U.S. Military	U.S. Government	International Standards	ANSI/NFPA Standards	Locking Ball Quantity	Air Inclusion	Fluid Loss	Vacuum Inch HG	Flow $\Delta P = 15$ PSI
1/4"	-	-	ISO16028	-	12	0.020cc	0.015cc	N/R	3.2 GPM
3/8"	-	-	ISO16028	T3.20.15	12	0.020cc	0.015cc	N/R	11 GPM
1/2"	-	-	ISO16028	-	12	0.070cc	0.020cc	N/R	18 GPM
5/8"	-	-	ISO16028	-	12	0.070cc	0.030cc	N/R	21 GPM
3/4"	-	-	ISO16028	-	12	0.100cc	0.150cc	N/R	28 GPM
1"	-	-	ISO16028	-	12	0.150cc	0.200cc	N/R	50 GPM

## List Price Seal Option Adders:

Body Size	Standard Seal Options										Kalrez® Seal Options					Treatments			
	Viton®		EPDM		FDA Viton®		Mil-Nitrile		Fuel Nitrile		Silicone		4079		6375		7075		Oxy-Clean
	Pre	Add\$	Pre	Add\$	Pre	Add\$	Pre	Add\$	Pre	Add\$	Pre	Add\$	Pre	Add\$	Pre	Add\$	Suf	Add\$	
1/4"	F-		P-	0	D-	POR	M-	POR	JF-	POR	S-	POR	K4-	POR	K6-	POR	K7-	POR	-C1
3/8"	F-		P-		D-	POR	M-	POR	JF-	POR	S-	POR	K4-	POR	K6-	POR	K7-	POR	-C1
1/2"	F-		P-		D-	POR	M-	POR	JF-	POR	S-	POR	K4-	POR	K6-	POR	K7-	POR	-C1
5/8"	F-		P-		D-	POR	M-	POR	JF-	POR	S-	POR	K4-	POR	K6-	POR	K7-	POR	-C1
3/4"	F-		P-		D-	POR	M-	POR	JF-	POR	S-	POR	K4-	POR	K6-	POR	K7-	POR	-C1
1"	F-		P-		D-	POR	M-	POR	JF-	POR	S-	POR	K4-	POR	K6-	POR	K7-	POR	-C1

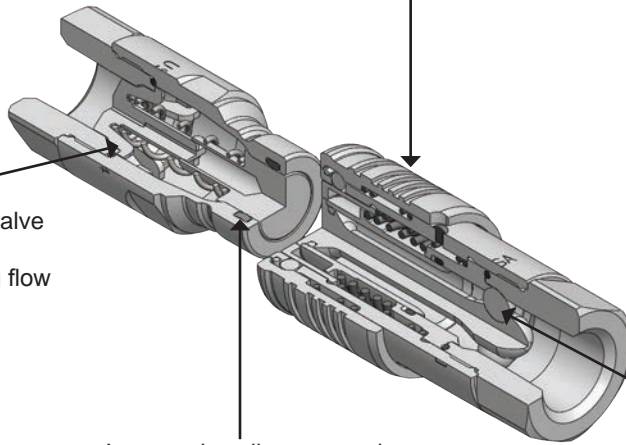
# HT-Series Hydraulic Couplings

**Compact Profile!**

Bulkhead mountable sleeve for breakaway, multi-plate, or Blindmate installations.

**High Flow Performance!**

High strength laser-cut valve guide maximizes valve stability while minimizing flow restriction.



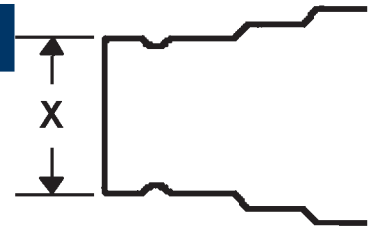
DORS (dual opposing retention spheres) retention system prevents valve stem ejection during surge flow and pressure spike conditions.

Improved sealing system incorporates a high performance molded polyurethane or O-ring energized PTFE valve seal.

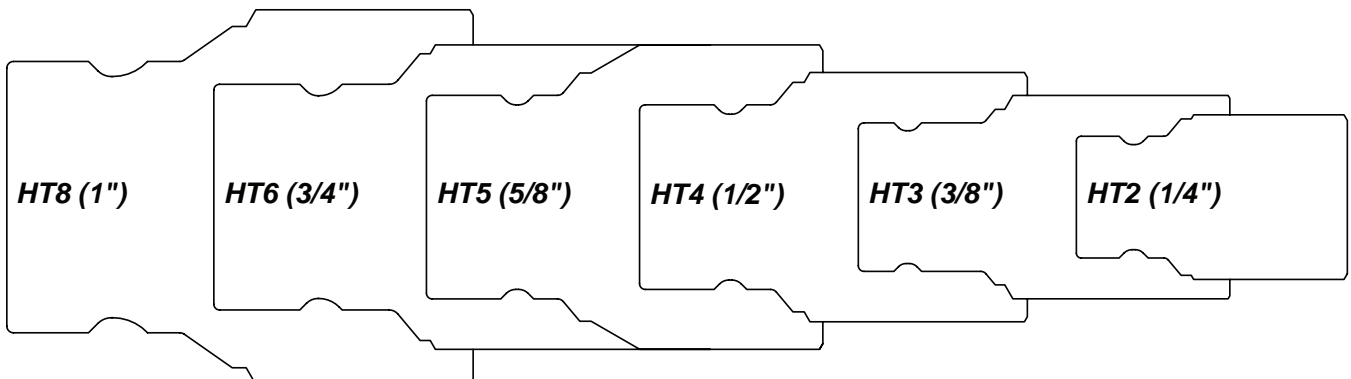
**Easily Rebuildable Coupler & Nipple!**

## Using the Nipple Profile Dimensions to Select Proper Size

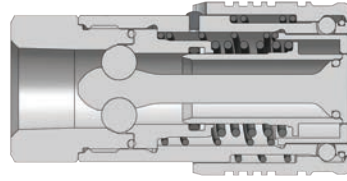
ISO16028 Body Size	Minimum Dimension 'X' Measurement	Maximum Dimension 'X' Measurement
1/4"	0.634" (16.10 mm)	0.638" (16.20 mm)
3/8"	0.774" (19.66 mm)	0.779" (19.79 mm)
1/2"	0.963" (24.45 mm)	0.968" (24.58 mm)
5/8"	1.061" (26.95 mm)	1.066" (27.08 mm)
3/4"	1.176" (29.87 mm)	1.181" (30.00 mm)
1"	1.415" (35.94mm)	1.420" (36.07 mm)



## Using the Profile Layover to Select Proper Size

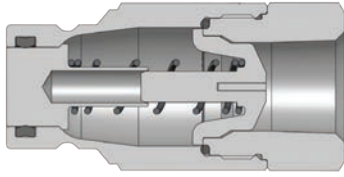


# HT-Series Hydraulic Couplings



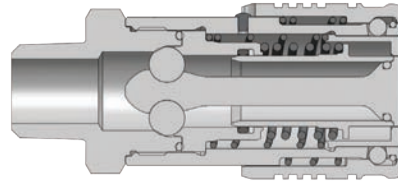
Body Size	HT-Series ISO16028 Flushface Interchange Coupler (Female Threads)											
	Part Detail				Length		Maximum OD		Hex Inch	Weight Lb	Package Qty	
	Part Number	Threads	Material		Inch	mm	Inch	mm			Bag	Box
1/4"	2HTF2	1/4" - 18 NPTF	steel		1.98	50.3	1.11	28.3	7/8"	0.23	-	25
1/4"	2HTBF2	1/4" - 19 BSPP	steel		1.98	50.3	1.11	28.3	7/8"	0.23	-	25
3/8"	3HTF3	3/8" - 18 NPTF	steel		2.50	63.5	1.24	31.5	1"	0.44	-	25
3/8"	3HTF3-SS	3/8" - 18 NPTF	316 stainless		2.50	63.5	1.24	31.5	1"	0.44	-	25
3/8"	3HTBF3	3/8" - 19 BSPP	steel		2.50	63.5	1.24	31.5	1"	0.44	-	25
3/8"	3HTBF3-SS	3/8" - 19 BSPP	316 stainless		2.50	63.5	1.24	31.5	1"	0.44	-	25
3/8"	3HTOF3	9/16" - 18 ORB	steel		2.50	63.5	1.24	31.5	1"	0.49	-	25
3/8"	3HTF4	1/2" - 14 NPTF	steel		2.72	69.1	1.24	31.5	1-1/8"	0.48	-	25
3/8"	3HTF4-SS	1/2" - 14 NPTF	316 stainless		2.72	69.1	1.24	31.5	1-1/8"	0.48	-	25
3/8"	3HTBF4	1/2" - 14 BSPP	steel		2.72	69.1	1.24	3.5	1-1/8"	0.48	-	25
3/8"	3HTBF4-SS	1/2" - 14 BSPP	316 stainless		2.72	69.1	1.24	31.5	1-1/8"	0.48	-	25
3/8"	3HTOF4	3/4" - 16 ORB	steel		2.72	69.1	1.24	31.5	1-1/8"	0.53	-	25
1/2"	4HTF4	1/2" - 14 NPTF	steel		3.02	76.7	1.54	39.1	1-3/16"	0.86	-	20
1/2"	4HTF4-SS	1/2" - 14 NPTF	316 stainless		3.02	76.7	1.54	39.1	1-3/16"	0.86	-	20
1/2"	4HTBF4	1/2" - 14 BSPP	steel		3.02	76.7	1.54	39.1	1-3/16"	0.86	-	20
1/2"	4HTBF4-SS	1/2" - 14 BSPP	316 stainless		3.02	76.7	1.54	39.1	1-3/16"	0.86	-	20
1/2"	4HTOF4	3/4" - 16 ORB	steel		3.02	76.7	1.54	39.1	1-3/16"	0.86	-	20
1/2"	4HTOF5	7/8" - 14 ORB	steel		3.12	79.2	1.54	39.1	1-5/16"	0.92	-	20
1/2"	4HTF6	3/4" - 14 NPTF	steel		3.22	81.8	1.54	39.1	1-5/16"	0.98	-	20
1/2"	4HTF6-SS	3/4" - 14 NPTF	316 stainless		3.22	81.8	1.54	39.1	1-5/16"	0.98	-	20
1/2"	4HTBF6	3/4" - 14 BSPP	steel		3.22	81.8	1.54	39.1	1-5/16"	0.98	-	20
1/2"	4HTBF6-SS	3/4" - 14 BSPP	316 stainless		3.22	81.8	1.54	39.1	1-5/16"	0.98	-	20
1/2"	4HTOF6	1-1/16" - 12 ORB	steel		3.42	86.9	1.54	39.1	1-5/16"	0.96	-	20
5/8"	5HTOF5	7/8" - 14 ORB	steel		3.32	84.3	1.67	42.4	1-1/2"	1.58	-	10
5/8"	5HTF6	3/4" - 14 NPTF	steel		3.32	84.3	1.67	42.4	1-1/2"	1.51	-	10
5/8"	5HTF6-SS	3/4" - 14 NPTF	316 stainless		3.32	84.3	1.67	42.4	1-1/2"	1.51	-	10
5/8"	5HTBF6	3/4" - 14 BSPP	steel		3.32	84.3	1.67	42.4	1-1/2"	1.51	-	10
5/8"	5HTBF6-SS	3/4" - 14 BSPP	316 stainless		3.32	84.3	1.67	42.4	1-1/2"	1.51	-	10
5/8"	5HTOF6	1-1/16" - 12 ORB	steel		3.32	84.3	1.67	42.4	1-1/2"	1.49	-	10
3/4"	6HTOF5	7/8" - 14 ORB	steel		3.70	94.0	1.85	47.0	1-1/2"	1.82	-	10
3/4"	6HTF6	3/4" - 14 NPTF	steel		3.70	94.0	1.85	47.0	1-1/2"	1.82	-	10
3/4"	6HTF6-SS	3/4" - 14 NPTF	316 stainless		3.70	94.0	1.85	47.0	1-1/2"	1.82	-	10
3/4"	6HTBF6	3/4" - 14 BSPP	steel		3.70	94.0	1.85	47.0	1-1/2"	1.82	-	10
3/4"	6HTBF6-SS	3/4" - 14 BSPP	316 stainless		3.70	94.0	1.85	47.0	1-1/2"	1.82	-	10
3/4"	6HTOF6	1-1/16" - 12 ORB	steel		3.70	94.0	1.85	47.0	1-1/2"	1.91	-	10
3/4"	6HTF8	1" - 11 1/2 NPTF	steel		3.82	97.0	1.92	48.8	1-3/4"	2.06	-	10
3/4"	6HTF8-SS	1" - 11 1/2 NPTF	316 stainless		3.82	97.0	1.92	48.8	1-3/4"	2.06	-	10
3/4"	6HTBF8	1" - 11 BSPP	steel		3.82	97.0	1.92	48.8	1-3/4"	2.06	-	10
3/4"	6HTBF8-SS	1" - 11 BSPP	316 stainless		3.82	97.0	1.92	48.8	1-3/4"	2.06	-	10
3/4"	6HTOF8	1-5/16" - 12 ORB	steel		3.82	97.0	1.92	48.8	1-3/4"	2.16	-	10
1"	8HTF8	1" - 11 1/2 NPTF	steel		4.24	107.7	2.29	58.2	1-3/4"	2.67	-	10
1"	8HTF8-SS	1" - 11 1/2 NPTF	316 stainless		4.24	107.7	2.29	58.2	1-3/4"	2.67	-	10
1"	8HTBF8	1" - 11 BSPP	steel		4.24	107.7	2.29	58.2	1-3/4"	2.67	-	10
1"	8HTBF8-SS	1" - 11 BSPP	316 stainless		4.24	107.7	2.29	58.2	1-3/4"	2.67	-	10
1"	8HTOF8	1-5/16" - 12 ORB	steel		4.24	107.7	2.29	58.2	1-3/4"	2.68	-	10
1"	8HTF10	1-1/4" - 11 1/2 NPTF	steel		4.34	110.2	2.29	58.2	2"	2.75	-	10
1"	8HTF10-SS	1-1/4" - 11 1/2 NPTF	316 stainless		4.34	110.2	2.29	58.2	2"	2.75	-	10
1"	8HTBF10	1-1/4" - 11 BSPP	steel		4.29	109.0	2.29	58.2	2"	2.75	-	10
1"	8HTBF10-SS	1-1/4" - 11 BSPP	316 stainless		4.29	109.0	2.29	58.2	2"	2.75	-	10
1"	8HTOF10	1-5/8" - 12 ORB	steel		4.24	107.7	2.29	58.2	2"	2.84	-	10

# HT-Series Hydraulic Couplings

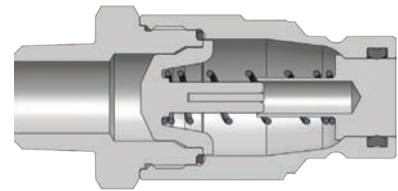
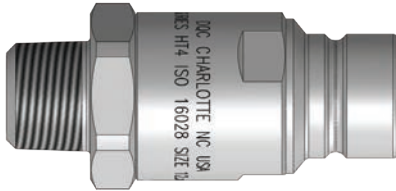


Body Size	HT-Series ISO16028 Flushface Interchange Nipple (Female Threads)											
	Part Detail				Length		Maximum OD		Hex	Weight Lb	Package Qty	
	Part Number	Threads	Material		Inch	mm	Inch	mm	Inch		Bag	Box
1/4"	HT2F2	1/4" - 18 NPTF	steel		1.89	48.00	0.97	24.6	7/8"	0.16	-	25
1/4"	HT2BF2	1/4" - 19 BSPP	steel		1.89	48.00	0.97	24.6	7/8"	0.16	-	25
3/8"	HT3F3	3/8" - 18 NPTF	steel		2.48	63.0	1.10	27.9	1"	0.27	-	25
3/8"	HT3F3-SS	3/8" - 18 NPTF	316 stainless		2.48	63.0	1.10	27.9	1"	0.27	-	25
3/8"	HT3BF3	3/8" - 19 BSPP	steel		2.48	63.0	1.10	27.9	1"	0.27	-	25
3/8"	HT3BF3-SS	3/8" - 19 BSPP	316 stainless		2.48	63.0	1.10	27.9	1"	0.27	-	25
3/8"	HT3OF3	9/16" - 18 ORB	steel		2.48	63.0	1.10	27.9	1"	0.34	-	25
3/8"	HT3F4	1/2" - 14 NPTF	steel		2.70	68.6	1.24	31.5	1-1/8"	0.31	-	25
3/8"	HT3F4-SS	1/2" - 14 NPTF	316 stainless		2.70	68.6	1.24	31.5	1-1/8"	0.31	-	25
3/8"	HT3BF4	1/2" - 14 BSPP	steel		2.70	68.6	1.24	31.5	1-1/8"	0.31	-	25
3/8"	HT3BF4-SS	1/2" - 14 BSPP	316 stainless		2.70	68.6	1.24	31.5	1-1/8"	0.31	-	25
3/8"	HT3OF4	3/4" - 16 ORB	steel		2.70	68.6	1.24	31.5	1-1/8"	0.35	-	25
1/2"	HT4F4	1/2" - 14 NPTF	steel		2.63	66.8	1.31	33.3	1-3/16"	0.42	-	20
1/2"	HT4F4-SS	1/2" - 14 NPTF	316 stainless		2.63	66.8	1.31	33.3	1-3/16"	0.42	-	20
1/2"	HT4BF4	1/2" - 14 BSPP	steel		2.63	66.8	1.31	33.3	1-3/16"	0.42	-	20
1/2"	HT4BF4-SS	1/2" - 14 BSPP	316 stainless		2.63	66.8	1.31	33.3	1-3/16"	0.42	-	20
1/2"	HT4OF4	3/4" - 16 ORB	steel		2.63	66.8	1.31	33.3	1-3/16"	0.40	-	20
1/2"	HT4OF5	7/8" - 14 ORB	steel		2.63	69.3	1.31	33.3	1-5/16"	0.43	-	20
1/2"	HT4F6	3/4" - 14 NPTF	steel		2.73	71.9	1.44	36.6	1-5/16"	0.53	-	20
1/2"	HT4F6-SS	3/4" - 14 NPTF	316 stainless		2.83	71.9	1.44	36.6	1-5/16"	0.53	-	20
1/2"	HT4BF6	3/4" - 14 BSPP	steel		2.83	71.9	1.44	36.6	1-5/16"	0.53	-	20
1/2"	HT4BF6-SS	3/4" - 14 BSPP	316 stainless		2.83	71.9	1.44	36.6	1-5/16"	0.53	-	20
1/2"	HT4OF6	1-1/16" - 12 ORB	steel		3.03	77.0	1.44	36.6	1-5/16"	0.58	-	20
5/8"	HT5OF5	7/8" - 14 ORB	steel		2.88	73.2	1.65	41.9	1-1/2"	0.90	-	10
5/8"	HT5F6	3/4" - 14 NPTF	steel		2.88	73.2	1.65	41.9	1-1/2"	0.95	-	10
5/8"	HT5F6-SS	3/4" - 14 NPTF	316 stainless		2.88	73.2	1.65	41.9	1-1/2"	0.95	-	10
5/8"	HT5BF6	3/4" - 14 BSPP	steel		2.88	73.2	1.65	41.9	1-1/2"	0.95	-	10
5/8"	HT5BF6-SS	3/4" - 14 BSPP	316 stainless		2.88	73.2	1.65	41.9	1-1/2"	0.95	-	10
5/8"	HT5OF6	1-1/16" - 12 ORB	steel		2.88	73.2	1.65	41.9	1-1/2"	1.02	-	10
3/4"	HT6OF5	7/8" - 14 ORB	steel		3.42	86.9	1.65	41.9	1-1/2"	1.00	-	10
3/4"	HT6F6	3/4" - 14 NPTF	steel		3.42	86.9	1.65	41.9	1-1/2"	1.00	-	10
3/4"	HT6F6-SS	3/4" - 14 NPTF	316 stainless		3.42	86.9	1.65	41.9	1-1/2"	1.00	-	10
3/4"	HT6BF6	3/4" - 14 BSPP	steel		3.42	86.9	1.65	41.9	1-1/2"	1.00	-	10
3/4"	HT6BF6-SS	3/4" - 14 BSPP	316 stainless		3.42	86.9	1.65	41.9	1-1/2"	1.00	-	10
3/4"	HT6OF6	1-1/16" - 12 ORB	steel		3.42	86.9	1.65	41.9	1-1/2"	1.02	-	10
3/4"	HT6F8	1" - 11 1/2 NPTF	steel		3.54	89.9	1.92	48.8	1-3/4"	1.15	-	10
3/4"	HT6F8-SS	1" - 11 1/2 NPTF	316 stainless		3.54	89.9	1.92	48.8	1-3/4"	1.15	-	10
3/4"	HT6BF8	1" - 11 BSPP	steel		3.54	89.9	1.92	48.8	1-3/4"	1.15	-	10
3/4"	HT6BF8-SS	1" - 11 BSPP	316 stainless		3.54	89.9	1.92	48.8	1-3/4"	1.15	-	10
3/4"	HT6OF8	1-5/16" - 12 ORB	steel		3.54	89.9	1.92	48.8	1-3/4"	1.12	-	10
1"	HT8F8	1" - 11 1/2 NPTF	steel		3.50	88.9	1.96	49.8	1-3/4"	1.69	-	10
1"	HT8F8-SS	1" - 11 1/2 NPTF	316 stainless		3.50	88.9	1.96	49.8	1-3/4"	1.69	-	10
1"	HT8BF8	1" - 11 BSPP	steel		3.50	88.9	1.96	49.8	1-3/4"	1.69	-	10
1"	HT8BF8-SS	1" - 11 BSPP	316 stainless		3.50	88.9	1.96	49.8	1-3/4"	1.69	-	10
1"	HT8OF8	1-5/16" - 12 ORB	steel		3.50	88.9	1.96	49.8	1-3/4"	1.65	-	10
1"	HT8F10	1-1/4" - 11 1/2 NPTF	steel		3.61	91.7	2.19	55.6	2"	1.84	-	10
1"	HT8F10-SS	1-1/4" - 11 1/2 NPTF	316 stainless		3.61	91.7	2.19	55.6	2"	1.84	-	10
1"	HT8BF10	1-1/4" - 11 BSPP	steel		3.55	90.2	2.19	55.6	2"	1.84	-	10
1"	HT8BF10-SS	1-1/4" - 11 BSPP	316 stainless		3.55	90.2	2.19	55.6	2"	1.84	-	10
1"	HT8OF10	1-5/8" - 12 ORB	steel		3.51	89.2	2.19	55.6	2"	1.93	-	10

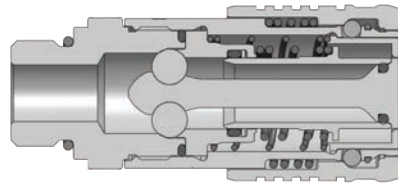
# HT-Series Hydraulic Couplings



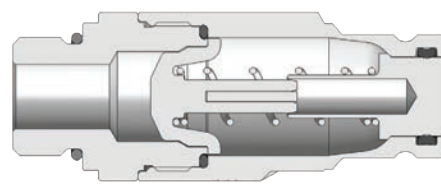
HT-Series ISO16028 Flushface Interchange Coupler (Male Threads)												
Body Size	Part Detail				Length		Maximum OD		Hex Inch	Weight Lb	Package Qty	
	Part Number	Threads	Material		Inch	mm	Inch	mm			Bag	Box
					3/8"	3HTM3	3/8" - 18 NPTF	steel	2.88	73.2	1.24	31.5
3/8"	3HTM4	1/2" - 14 NPTF	steel	2.97	75.4	1.24	31.5	1-1/8"	0.48	5	25	
1/2"	4HTM4	1/2" - 14 NPTF	steel	3.42	86.9	1.54	39.1	1-5/16"	0.97	-	20	



HT-Series ISO16028 Flushface Interchange Nipple (Male Threads)												
Body Size	Part Detail				Length		Maximum OD		Hex Inch	Weight Lb	Package Qty	
	Part Number	Threads	Material		Inch	mm	Inch	mm			Bag	Box
					3/8"	HT3M3	3/8" - 18 NPTF	steel	2.87	72.9	1.24	31.5
3/8"	HT3M4	1/2" - 14 NPTF	steel	2.96	75.2	1.24	31.5	1-1/8"	0.38	5	25	
1/2"	HT4M4	1/2" - 14 NPTF	steel	3.03	77.0	1.44	36.6	1-5/16"	0.42	-	20	

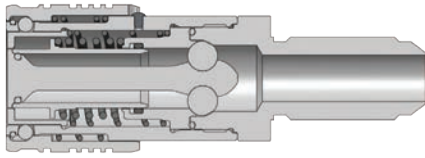


HT-Series ISO16028 Flushface Interchange Coupler (Male ORB Threads)												
Body Size	Part Detail				Length		Maximum OD		Hex Inch	Weight Lb	Package Qty	
	Part Number	Threads	Material		Inch	mm	Inch	mm			Bag	Box
					3/8"	3HTOM4	3/4" - 16 ORB	steel	2.75	69.9	1.24	31.5

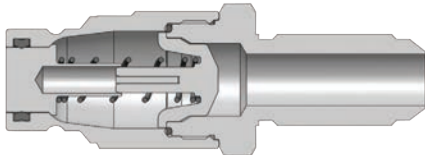


HT-Series ISO16028 Flushface Interchange Nipple (Male ORB Threads)												
Body Size	Part Detail				Length		Maximum OD		Hex Inch	Weight Lb	Package Qty	
	Part Number	Threads	Material		Inch	mm	Inch	mm			Bag	Box
					3/8"	HT3OM4	3/4" 16 ORB	steel	2.73	69.3	1.17	29.7

## HT-Series Hydraulic Couplings



Body Size	HT-Series ISO16028 Flushface Interchange Coupler (Male Bulkhead Threads)											
	Part Detail				Length		Maximum OD		Hex Inch	Weight Lb	Package Qty	
	Part Number	Threads	Material		Inch	mm	Inch	mm			Bag	Box
1/2"	4HTJB5	7/8" - 14 JIC BH	steel		4.38	111.3	1.54	39.1	1-5/16"	1.08	-	20
1/2"	4HTRB5	1" - 14 ORFS BH	steel		4.37	111.0	1.54	39.1	1-5/16"	1.11	-	20
1/2"	4HTJB6	1-1/6" - 12 JIC BH	steel		4.55	115.6	1.54	39.1	1-5/16"	1.22	-	20



Body Size	HT-Series ISO16028 Flushface Interchange Nipple (Male Bulkhead Threads)											
	Part Detail				Length		Maximum OD		Hex Inch	Weight Lb	Package Qty	
	Part Number	Threads	Material		Inch	mm	Inch	mm			Bag	Box
1/2"	HT4JB5	7/8" - 14 JIC BH	steel		3.99	101.3	1.44	36.6	1-5/16"	0.42	-	20
1/2"	HT4RB5	1" - 14 ORFS BH	steel		3.98	101.1	1.44	36.6	1-5/16"	0.49	-	20
1/2"	HT4JB6	1-1/6" - 12 JIC BH	steel		4.16	115.6	1.44	36.6	1-5/16"	0.54	-	20

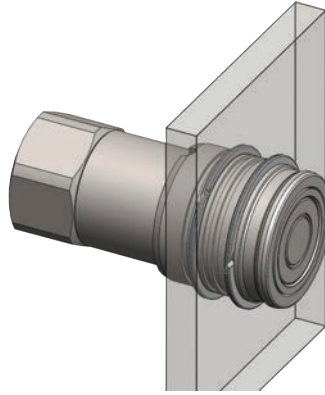


Body Size	HT-Series ISO16028 Flushface Coupler Dust Plug						
	Part Detail			Weight Lb	Package Qty		
	Part Number	Body			Bag	Box	
1/4"	2HTDP	Nitrile		0.05	5	50	
3/8"	3HTDP	Nitrile		0.05	5	50	
1/2"	4HTDP	Nitrile		0.06	5	50	
5/8"	5HTDP	Nitrile		0.07	5	50	
3/4"	6HTDP	Nitrile		0.07	5	50	
1"	8HTDP	Nitrile		0.15	5	50	



Body Size	HT-Series ISO16028 Flushface Nipple Dust Cap						
	Part Detail			Weight Lb	Package Qty		
	Part Number	Body			Bag	Box	
1/4"	HT2DC	Nitrile		0.04	5	50	
3/8"	HT3DC	Nitrile		0.04	5	50	
1/2"	HT4DC	Nitrile		0.04	5	50	
5/8"	HT5DC	Nitrile		0.06	5	50	
3/4"	HT6DC	Nitrile		0.06	5	50	
1"	HT8DC	Nitrile		0.10	5	50	

## HT-Series Hydraulic Couplings



Body Size	HT-Series ISO16028 Flushface Interchange Coupler Bulkhead Kits						
	Part Detail				Bulkhead Kit Contents	Package Qty	
	Part Number	Mounting Hole ID	Ring Material			Bag	Box
1/4"	2HT-BMK	1.125"	Steel		Two 360° Retaining Rings	1	25
3/8"	3HT-BMK	1.250"	Steel		Two 360° Retaining Rings	1	25
1/2"	4HT-BMK	1.560"	Steel		Two 360° Retaining Rings	1	25
5/8"	5HT-BMK	1.685"	Steel		Two 360° Retaining Rings	1	25
3/4"	6HT-BMK	1.870"	Steel		Two 360° Retaining Rings	1	25
1"	8HT-BMK	2.310"	Steel		Two 360° Retaining Rings	1	25

Body Size	HT-Series ISO16028 Flushface Interchange Coupler Seal Kits						
	Part Detail				Seal Kit Contents	Package Qty	
	Part Number	Coupler Style	Seal Material			Bag	Box
1/4"	2HT-SKIT	all	Nitrile		Stem/Adapter/Gland O-Ring, Gland B.U.	25	200
3/8"	3HT-SKIT	all	Nitrile		Stem/Adapter/Gland O-Ring, Gland B.U.	25	200
1/2"	4HT-SKIT	all	Nitrile		Stem/Adapter/Gland O-Ring, Gland B.U.	25	200
5/8"	5HT-SKIT	all	Nitrile		Stem/Adapter/Gland O-Ring, Gland B.U.	25	200
3/4"	6HT-SKIT	all	Nitrile		Stem/Adapter/Gland O-Ring, Gland B.U.	25	200
1"	8HT-SKIT	all	Nitrile		Stem/Adapter/Gland O-Ring, Gland B.U.	25	200

Body Size	HT-Series ISO16028 Flushface Interchange Nipple Seal Kits						
	Part Detail				Seal Kit Contents	Package Qty	
	Part Number	Coupler Style	Seal Material			Bag	Box
1/4"	HT2-SKIT-V2	all	Nitrile		Main Valve Seal and Adapter O-Ring	25	200
3/8"	HT3-SKIT-V2	all	Nitrile		Main Valve Seal and Adapter O-Ring	25	200
1/2"	HT4-SKIT-V2	all	Nitrile		Main Valve Seal and Adapter O-Ring	25	200
5/8"	HT5-SKIT-V2	all	Nitrile		Main Valve Seal and Adapter O-Ring	25	200
3/4"	HT6-SKIT-V2	all	Nitrile		Main Valve Seal and Adapter O-Ring	25	200
1"	HT8-SKIT-V2	all	Nitrile		Main Valve Seal and Adapter O-Ring	25	200

Contact Factory for old style O-ring / PTFE back-up nipple seal kits.