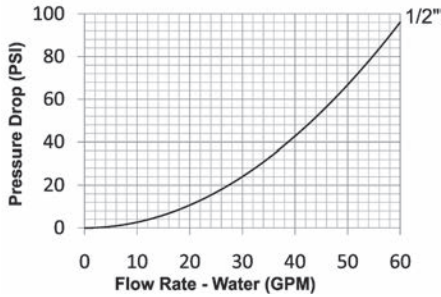


EA-Series Hydraulic Couplings

Interchange Data:

- Water-Blast Interchange
- Parker Series-WB, Aeroquip FD69, Snap-Tite 56-Series



Materials:

- Machined components are manufactured using solid high strength steel bar stock.
- Stainless steel springs and retaining rings maximize corrosion resistance and extend service life.
- Latches are manufactured from high-strength steel and plated with electroless nickel.
- Steel nipples are machined from solid high strength steel bar stock and hardened.
- Machined steel componentry is plated using ROHS Compliant Trivalent Chrome.

Seal Components:

- Nitrile (Buna-N) seals are standard, providing a temperature range of -40°F to +250°F (-40°C to +121°C).
- Couplers have a PTFE Anti-Extrusion ring, providing resistance to O-Ring dynamic impulse pressure damage.

Rated Pressure Chart:

Body Size	EA-Series Water-Blast Interchange (Connected)			
	Coupler/Plug			
	Maximum Working		Burst	
	PSI	Bar	PSI	Bar
1/2"	10,000	700	30,000	2,100

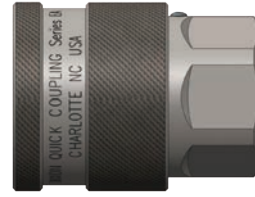
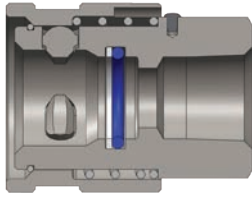
Technical Specifications:

Body Size	Interchange Standards				Functional Parameters				
	U.S. Military	U.S. Government	International Standards	ANSI/NFPA Standards	Locking Mechanism	Air Inclusion	Fluid Loss	Vacuum Inch HG	Flow ΔP = 40 PSI
1/2"	-	-	-	-	Maxi-Latch	N/A	N/A	N/R	40 GPM

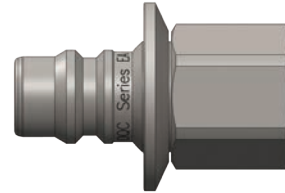
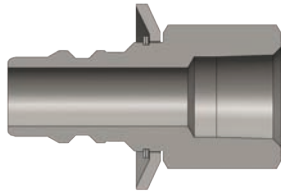
List Price Option Adders:

Body Size	Standard Seal Options										Kalrez® Seal Options						Other Options			
	Viton®		EPDM		FDA Viton®		Mil-Nitrile		Silicone		4079		6375		7075		No Pin-Lock		Oxy-Clean	
	Pre	Add \$	Pre	Add \$	Pre	Add \$	Pre	Add \$	Pre	Add \$	Pre	Add \$	Pre	Add \$	Pre	Add \$	Suf	Add \$	Suf	Add \$
1/2"	F-	\$0.00	P-	\$4.00	D-	\$5.20	M-	\$3.60	S-	\$4.50	K4-	POR	K6-	POR	K7-	POR	-NL	-\$5.20	-C1	\$12.00

EA-Series Hydraulic Couplings



Body Size	EA-Series Water-Blast Interchange Coupler (Female Threads)											
	Part Detail				Length		Maximum OD		Hex Inch	Weight Lb	Package Qty	
	Part Number	Threads	Material		Inch	mm	Inch	mm			Bag	Box
1/2"	4EAF3	3/8" - 18 NPTF	steel		2.20	55.9	1.62	41.1	1-1/4"	0.68	5	25
1/2"	4EAF4	1/2" - 14 NPTF	steel		2.20	55.9	1.62	41.1	1-1/4"	0.65	5	25



Body Size	EA-Series Water-Blast Interchange Nipple (Female Threads)											
	Part Detail				Length		Maximum OD		Hex Inch	Weight Lb	Package Qty	
	Part Number	Threads	Material		Inch	mm	Inch	mm			Bag	Box
1/2"	EA4F3	3/8" - 18 NPTF	steel		2.35	59.7	1.62	41.1	1-1/8"	0.38	5	25
1/2"	EA4F4	1/2" - 14 NPTF	steel		2.35	59.7	1.62	41.1	1-1/8"	0.34	5	25

Body Size	E-Series Water-Blast Interchange Coupler Seal Kits							
	Part Detail				Seal Kit		Package Qty	
	Part Number	Coupler Style	Seal Material		Contents		Bag	Box
1/2"	4EA-SKIT	all	Nitrile		Body O-Ring and PTFE Back-up		25	200
1/2"	F-4EA-SKIT	all	Viton®		Body O-Ring and PTFE Back-up		25	200
1/2"	P-4EA-SKIT	all	EPDM		Body O-Ring and PTFE Back-up		25	200

EA Profile

