

KORD INDUSTRIAL INC. 866.874.5673



Products Recommended for Steam Service

Quick Disconnect Fittings

Quick disconnect fittings (socket and plug) are available in solid brass with stainless steel springs and locking balls in sizes $\frac{1}{4}$ " through $1\frac{1}{2}$ ".



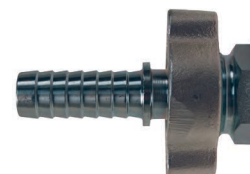
Dry Disconnect Fittings

Dry disconnect fittings (coupler and adapter) are available in stainless steel, with EPDM seals in sizes $\frac{3}{4}$ " and 1".



GJ Boss™ Female Ground Joint Fittings

GJ Boss™ female ground joint fittings are available in plated steel and/or iron in sizes $\frac{1}{4}$ " through 6".



Boss Female Washer Seal Fittings

Boss female washer seal fittings are available in plated steel and/or iron in sizes $\frac{3}{8}$ " through 3".



Boss Male Stems

Boss male stems are available in steel bar stock in sizes $\frac{1}{4}$ " through 1"; iron in sizes $1\frac{1}{4}$ " through 4"; 316 stainless steel in sizes $\frac{1}{2}$ " through 4" and brass in sizes $\frac{3}{4}$ " through 3".



Boss Clamps

Boss clamps in the 2-bolt and 4-bolt style are available in plated iron in sizes $\frac{1}{4}$ " through 3"; stainless steel in sizes $\frac{1}{2}$ " through 3" and brass in sizes $\frac{1}{2}$ " through 2". Boss clamps in the three-piece style are available in plated iron in sizes 3" through 6".



180° Steam Gauge Siphon

180° steam gauge siphon is available in steel and red brass pipe in $\frac{1}{4}$ ". In order to prevent live steam from entering a pressure gauge bourdon tube a siphon filled with water should be installed between the gauge and the process line.



250 PSIG Steam Ball Valve

250 lb. steam ball valves are available with a threaded bronze valve, 316 stainless steel ball and stem in sizes $\frac{1}{2}$ " through 2".



Note: Pressurized steam is an extremely dangerous commodity. Only hose, fittings, clamps and accessory items that have been approved for steam service should ever be used! Never use an unapproved item for steam service. Always follow the manufacturer's product recommendations for pressurized steam handling.

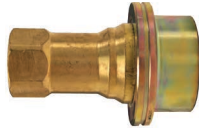
Steam Quick Disconnect Couplings

Applications:

Designed exclusively for steam applications, the coupler and plug are solid brass with stainless steel springs and locking balls. The coupler has a large plated steel sleeve especially designed for easier gripping with gloves. Two ethylene propylene O-rings in the coupler and one ethylene propylene O-ring in the plug provide double protection against leaks. Rated to **100 PSI** gauge saturated steam (**338°F**).



Warning: Do Not Disconnect Under Pressure!!



poppet valve coupler

Body Size	Female NPT Size	Part #
1/4"	1/4"	B16-200S
3/8"	3/8"	B16-300S
1/2"	1/2"	B16-400S
3/4"	3/4"	B16-600S
1"	1"	B16-800S
1-1/2"	1-1/2"	B16-1200S



poppet valve plug

Body Size	Female NPT Size	Part #
1/4"	1/4"	B17-200S
3/8"	3/8"	B17-300S
1/2"	1/2"	B17-400S
3/4"	3/4"	B17-600S
1"	1"	B17-800S
1-1/2"	1-1/2"	B17-1200S

NEW
FOR 2013

Dry Disconnect Fittings for Steam Service

Applications:

Designed to fit hoses carrying steam used in chemical (heating), pharmaceutical (disinfection and sterilization) and at loading bays

Materials:

- coupling house and all inner parts: stainless steel
- seals: EPDM (standard), other materials available,

Features:

- unintentional separation is eliminated preventing accidents and avoiding unintended down time
- performance unaffected by surface rust
- lockable versions are available,



coupler

Female NPT	Body Size	Stainless Steel Part #
3/4"	56mm	DDSC075SS
1"	56mm	DDSC100SS



adapter

Female NPT	Body Size	Stainless Steel Part #
3/4"	56mm	DDSA075SS
1"	56mm	DDSA100SS

Boss Coupling System

Features: The spud part of the coupling serves as one half of the connection and is usually fixed to the equipment. The stem part that is clamped to the hose is the other half. The two halves are connected or disconnected by rotating the wing nut onto the spud. When connected they achieve a mechanical, as well as, a pressure seal.

Services: Boss couplings are all-purpose hose couplings, universally recommended for steam hose connections. They are also widely used for air, water, fluid petroleum, chemicals and liquid petroleum gas up to 1" ID. Boss couplings can be applied to many types of rubber, synthetic, plastic, metallic or semi-metallic hose. Consult the factory for specific media capabilities.

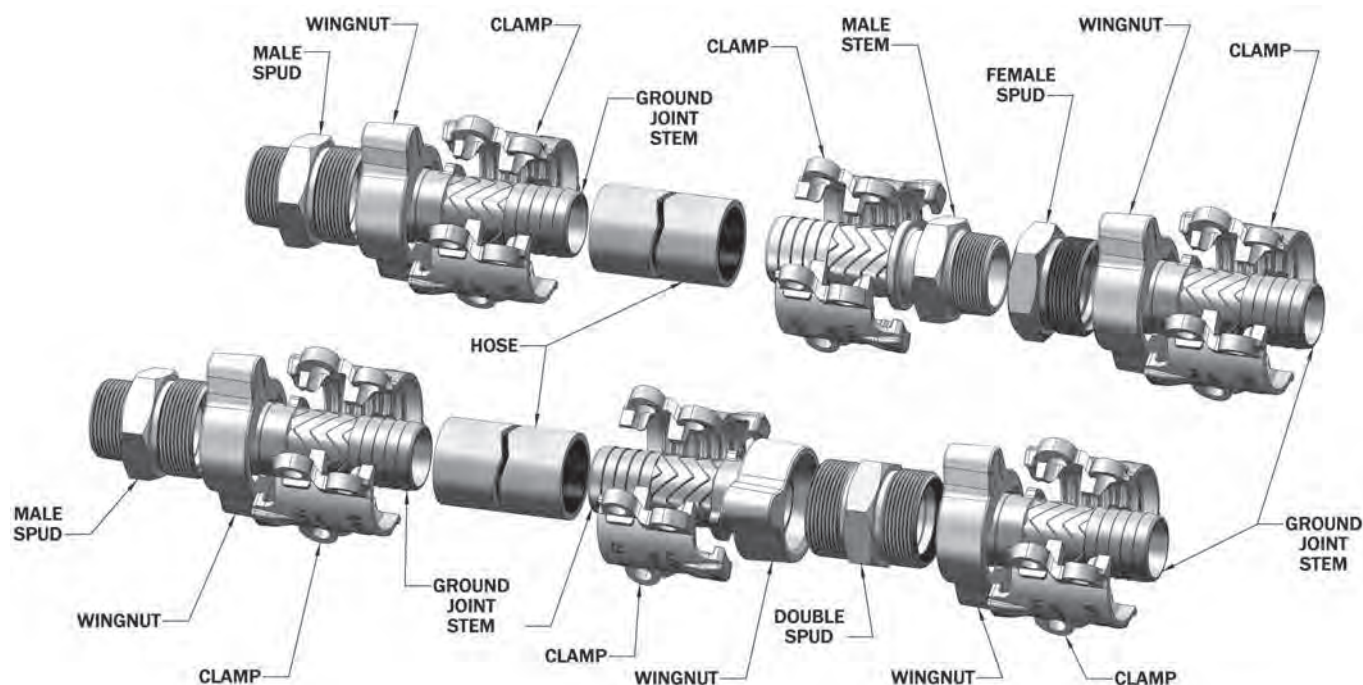
Purpose: Boss couplings supply a convenient threaded fitting to connect two lengths of hose, or a single length to a male or female threaded (NPT) outlet.

Material:

- stem: ¼" - 1" plated steel, 1¼" - 4" plated iron, 6" tubular steel
- spud: ¼" - 1" plated steel, 1¼" - 6" plated iron
- wing nut: ¼" plated steel, 3/8" - 6" plated iron

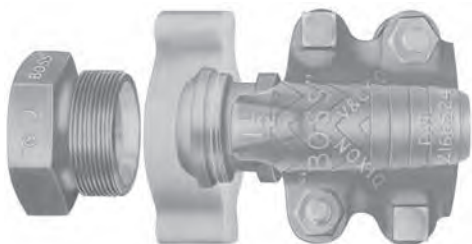
Seal Types:

- ground joint: copper or polymer seats
- washer: Klingsil® C-4401



Worn-out hose couplings can be dangerous. They should be checked regularly and replaced when necessary. Each coupling user should review applications and add safety devices where indicated.

GJ Boss™ Ground Joint Seal



Positive Metal-to-Polymer Seal

Features:

- A leakproof seal is formed when the metal head of the stem makes contact with the patented polymer seat in the spud.
- The non-metallic polymer seat resists most chemicals found in manufacturing facilities. (reference corrosion resistance chart on pages 694-699)
- recommended for steam service up to **450°F**
- easy to seal
- works with existing fittings
- *plated steel and / or iron*
- use with Boss clamps



complete female



stem

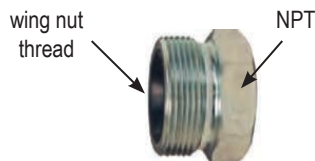


wing nut



knurled nut

Hose Shank x NPT	Part #		Part #		Opt Qty	Part #		Opt Qty	Part #
1/4"	GF1¹		GBA		100	SLS4		100	---
3/8"	GF3¹		GCA		100	CB		100	---
1/2"	GF6		GB1		100	B2		100	---
1/2" x 3/4"	GF26-1		GB6-1		50	B12		25	---
3/4"	GF26		GB6		50	B12		25	KB12
1"	GF36		GB11		50	B12		25	KB12
1-1/4"	GF51		GB16		25	B17		25	---
1-1/2"	GF61		GB21		25	B17		25	---
2"	GF81²		GB26²		10	B27		10	---
2-1/2"	GF96		GB31		5	B32		5	---
3"	GF111		GB36		5	B37		5	---
4"	GF141		GB46		5	B47		5	---
6"	GF201¹		GB66		2	B67		2	---

¹ 1/4", 3/8" and 6" come only with copper seat spuds² not to be used with #250, #275 or #306 Boss clamps

female spud



male spud



double spud

Thread	Part #		Opt Qty	Part #		Part #
1/4"	GBC¹		100	---		---
3/8"	GCC¹		100	GMC¹		---
1/2"	GB3		100	GM3		GDB3
3/4"	GB8		50	GM8		GDB13
1"	GB13		50	GM13		GDB13
1-1/4"	GB18		25	GM18		GDB23
1-1/2"	GB23		25	GM23		GDB23
2"	GB28		10	GM28		GDB28
2-1/2"	GB33		5	GM33		GDB33
3"	GB38		5	GM38		GDB38
4"	GB48		5			
6"	GB68¹		2			

¹ 1/4", 3/8" and 6" come only with copper seat spuds

Boss Holedall Fittings

Applications:

Boss Holedall fittings are designed for air and liquid applications where a permanent, low profile clamping system is desired. Both fittings are supplied with carbon steel ferrules.

Size	Hose OD		Plated Iron / Steel		Stainless Steel	
	From:	To:	Part #		Part #	
¾"	1-10/64"	1-14/64"	GF26P1			
	1-15/64"	1-18/64"	GF26P2			
	1-19/64"	1-22/64"	GF26P3			
1"	1-30/64"	1-34/64"	GF36P1			
	1-35/64"	1-38/64"	GF36P2			
	1-39/64"	1-42/64"	GF36P3			
1½"	1-20/64"	2"	GF61P1		RGF61P1	
	2-1/64"	2-8/64"	GF61P2		RGF61P2	
	2-9/64"	2-16/64"	GF61P3			
2"	2-36/64"	2-40/64"	GF81P1		RGF81P1	
	2-41/64"	2-48/64"	GF81P2		RGF81P2	
	2-49/64"	2-56/64"	GF81P3			
3"	3-26/64"	3-40/64"	GF111P1			
	3-41/64"	3-48/64"	GF111P2			
	3-49/64"	3-56/64"	GF111P3			



Not for steam service.



Boss Adapters

These fittings have male or female NPT threads and are designed to fit the standard ground joint spuds. *Supplied with a wing nut, as shown.*

Feature:

- plated steel and / or iron

male NPT adapters

Size	Part #		Pkg Qty
¾"	GMAS6		25
1"	GMAS11		25
1¼"	GMAS16		10
1½"	GMAS21		10
2"	GMAS26 ¹		10

¹ uses a special wing nut, part # B27-3



female NPT adapters

Size	Part #	
¾"	GFAS6	
1"	GFAS11	
1¼"	GFAS16	
1½"	GFAS21 ¹	
2"	GFAS26	

¹ Part is produced as a welded fabrication.



Boss Wing Nut Caps

Features:

- plated steel and / or iron
- Supplied with 12" chain and washer.
- For best results, use with washer style spuds and washers.



Boss wing nut caps are not intended for pressure applications.

Size	Part #		Opt Qty
¾" and 1"	B12SC		25
1¼" and 1½"	B17SC		25
2"	B27SC		10
3"	B37SC		5



316 Stainless Steel Ground Joint

recommended for steam service up to **450°F**



complete female



stem



wing nut



female spud

Size	Part #		Part #		Part #		Part #	
3/4"	RGF26		RGB6		RB12		RGB8	
1"	RGF36		RGB11		RB12		RGB13	
1 1/4"	RGF51		RGB16		RB17		RGB18	
1 1/2"	RGF61		RGB21		RB17		RGB23	
2"	RGF81 ¹		RGB26 ¹		RB27		RGB28	



not to be used with #250, #275 or #306 Boss clamps

Brass Ground Joint



complete female



stem



wing nut



female spud

Size	Part #		Part #		Part #		Part #	
3/4"	BGF26		BGB6		BB12		BGB8	
1"	BGF36		BGB11		BB12		BGB13	
1 1/4"	BGF51		BGB16		BB17		BGB18	
1 1/2"	BGF61		BGB21		BB17		BGB23	
2"	BGF81 ¹		BGB26 ¹		BB27		BGB28	



¹ not to be used with #250, #275 or #306 Boss clamps

316 Stainless Steel Washer Style



complete female



stem



wing nut



female spud

washer ²

Size	Part #		Part #		Part #		Part #		Part #	
3/4"	RWF26		RB6		RB12		RB8		W12	
1"	RWF36		RB11		RB12		RB13		W12	
1 1/4"	RWF51		RB16		RB17		RB18		W17	
1 1/2"	RWF61		RB21		RB17		RB23		W17	
2"	RWF81 ¹		RB26 ¹		RB27		RB28		W27	



¹ not to be used with #250, #275 or #306 Boss clamps

² washer is nitrile rubber bonded, non-asbestos Klingsil® C-4401

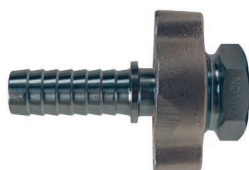
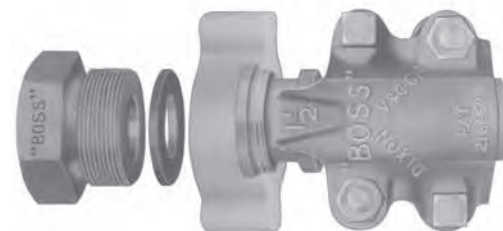
• Brass Washer Style available, consult Dixon for pricing and availability.

Boss Washer Seal

Features:

Washer Type

- A Klingsil® C-4401 washer is inserted between the stem and spud.
- A leakproof seal is formed by rotating the wing nut and hammering it tight.
- recommended for steam service up to **450°F**
- easy to seal
- works with existing fittings
- *plated steel and / or iron*
- use with Boss clamps found on pages 99 and 100.



complete female



stem



wing nut

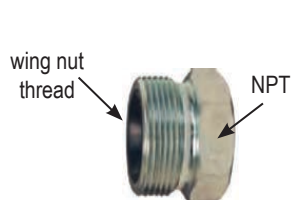


knurled nut

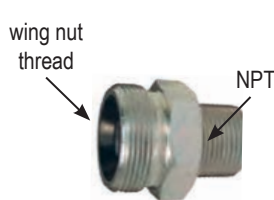
Hose Shank x NPT	Part #		Part #		Opt Qty	Part #		Opt Qty	Part #		Opt Qty
3/8"	WF3		SS337		100	CB		100	---	---	---
1/2"	WF6		B1		100	B2		100	---	---	---
1/2" x 3/4"	WF26-1		B6-1		50	B12		25	---	---	---
3/4"	WF26		B6		50	B12		25	KB12		25
1"	WF36		B11		50	B12		25	KB12		25
1-1/4"	WF51		B16		25	B17		25	---	---	---
1-1/2"	WF61		B21		25	B17		25	---	---	---
2"	WF81 ¹		B26 ¹		10	B27		10	---	---	---
2-1/2"	WF96		B31		5	B32		5	---	---	---
3"	WF111		B36		5	B37		5	---	---	---



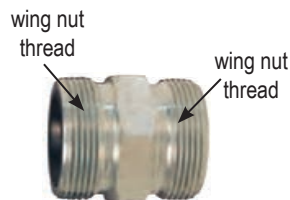
¹ not to be used with #250, #275 or #306 Boss clamps



female spud



male spud



double spud

washer¹

Thread	Part #		Opt Qty	Part #		Part #		Part #	
3/8"	CC		100	WMC		---		WBC	
1/2"	B3		100	WM3		DB3		W2	
3/4"	B8		25	WM8		DB13		W12	
1"	B13		50	WM13		DB13		W12	
1-1/4"	B18		25	WM18		DB23		W17	
1-1/2"	B23		25	WM23		DB23		W17	
2"	B28		10	WM28		DB28		W27	
2-1/2"	B33		5	---		---		W32	
3"	B38		5	WM38		DB38		W37	

¹ washer is nitrile rubber bonded, non-asbestos Klingsil® C-4401

Boss Male Stems



plated steel barstock



plated iron



316 stainless



brass

Hose x NPT Size	Plated Steel Bar Stock Part #	Opt Qty	Size	Plated Iron Part #	Opt Qty	Size	316 Stainless Part #	Size	Brass Part #
1/4" x 1/8"	MS4X2	25	---	---	---	1/2"	RMS1	---	---
1/4" x 1/4"	MSA	50	---	---	---	3/4"	RMS6	3/4"	BMS6
1/4" x 3/8"	MSB	25	---	---	---	1"	RMS11	1"	BMS11
3/8" x 1/4"	MS6X4	25	1 1/4"	MS16	20	1 1/4"	RMS16	1 1/4"	BMS16
3/8" x 3/8"	MSC	100	1 1/2"	MS21	20	1 1/2"	RMS21	1 1/2"	BMS21
3/8" x 1/2"	MS6X8	25	2"	MS26	10	2"	RMS26	2"	BMS26
1/2" x 1/4"	MS8X4	25	2 1/2"	MS31	5	2 1/2"	RMS31	---	---
1/2" x 3/8"	MS8X6	50	3"	MS36	5	3"	---	3"	BMS36
1/2" x 1/2"	MS1	25	4"	MS46	2	4"	---	---	---
1/2" x 3/4"	MS8X12	25	---	---	---	---	---	---	---
3/4" x 1/2"	MS12X8	25	---	---	---	---	---	---	---
3/4" x 3/4"	MS6	25	---	---	---	---	---	---	---
3/4" x 1"	MS12X16	25	---	---	---	---	---	---	---
1" x 3/4"	MS16X12	25	---	---	---	---	---	---	---
1" x 1"	MS11	25	---	---	---	---	---	---	---

- Use with Boss clamps on pages 99 and 100. For safety tags and safety tape see page 672.

LP-Boss Male Stems



male NPT end



beveled end

Size	Plated Steel Part #	316 Stainless Part #	Schedule 80 Plated Steel Part #	Unplated Steel Part #
1 1/4"	LP16	---	LP16-80¹	---
1 1/2"	LP21	---	LP21-80¹	---
2"	LP26	---	LP26-80¹	LPB26
2 1/2"	LP31	---	---	---
3"	LP36	RLP36	---	LPB36
4"	LP46	RLP46	---	---
6"	LP66	---	---	---

¹ schedule 80 stems meet NFPA 58

Boss Hose Menders

Features:

- collars engage gripping fingers of Boss clamps
- 3/4" - 3" plated iron; 1/2" plated steel



Size	Part #	Size	Part #
1/2"	M1	1 1/2"	M21
3/4"	M6	2"	M26
1"	M11	2 1/2"	M31
1 1/4"	M16	3"	M36

Features:

- polymer seat



Boss Spud x Hose Shank

Size	Part #	Steel
1"	GH1311	
2"	GH2826	