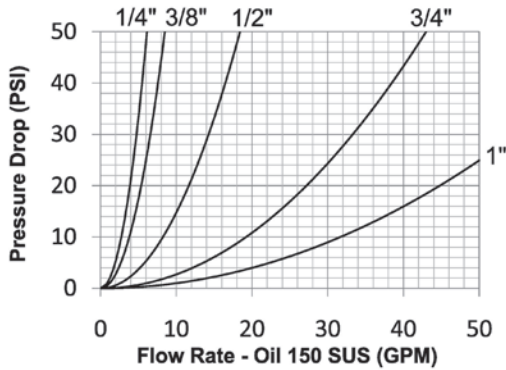


AG-Series Hydraulic Couplings

Interchange Data:

- Pioneer Agricultural Interchange
- Parker/Pioneer 4000 Series, Faster NS/NV-Series
- Safeway Series-S20, Stucchi IR-Series, Snap-Tite 60-Series



Materials:

- Machined components are manufactured using solid steel bar stock.
- Stainless steel balls, retaining rings, and springs maximize corrosion resistance and extend service life.
- Steel componentry is plated using ROHS Compliant Trivalent Chrome.
- Steel coupler sleeves are hardened to resist deformation and maximize service life.
- Steel nipples are hardened to provide heavy duty performance and resist brinelling.

Seal Components:

- Nitrile (Buna-N) seals are standard, providing a temperature range of -40°F to +250°F (-40°C to +121°C).
- Couplers have a PTFE Anti-Extrusion ring.
- Poppet valve seals are crimped in place to maintain integrity during excessive flow conditions and pressurized connection.
- Piloted ball valve has a seal that is crimped to prevent low-pressure leakage.

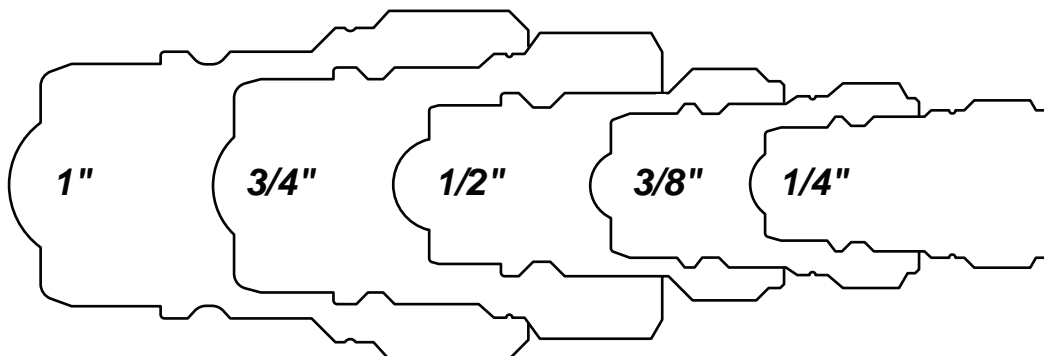
Rated Pressure Chart:

Body Size	AG-Series Agricultural Interchange (Connected)							
	Ball Steel Coupler/Plug				Poppet Steel Coupler/Plug			
	Maximum Working		Burst		Maximum Working		Burst	
	PSI	Bar	PSI	Bar	PSI	Bar	PSI	Bar
1/4"	4,000	275	24,400	1,700	4,000	275	21,000	1,500
3/8"	4,000	275	25,000	1,700	4,000	275	23,100	1,600
1/2"	4,000	275	16,500	1,100	4,000	275	16,500	1,100
3/4"	3,000	200	15,800	1,050	3,000	200	10,300	700
1"	3,000	200	13,500	900	3,000	200	13,000	900

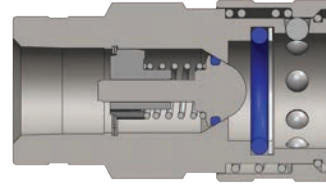
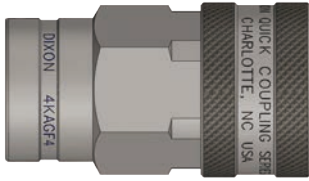
Technical Specifications:

Body Size	Interchange Standards				Functional Parameters				
	U.S. Military	U.S. Government	International Standards	ANSI/NFPA Standards	Locking Ball Quantity	Air Inclusion	Fluid Loss	Vacuum Inch HG	Flow $\Delta P = 22$ PSI
1/4"	-	-	-	-	8	1.1cc	0.9cc	26.5	4 GPM
3/8"	-	-	-	-	9	2.6cc	1.8cc	26.5	6 GPM
1/2"	-	-	ISO7241 'A'	-	9	3.8cc	2.9cc	26.5	12 GPM
3/4"	-	-	ISO5675	-	12	10.8cc	9.7cc	26.5	28 GPM
1"	-	-	-	-	12	15.9cc	15.3cc	26.5	48 GPM

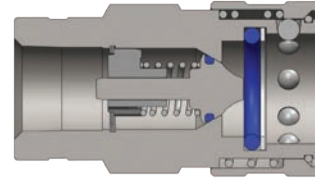
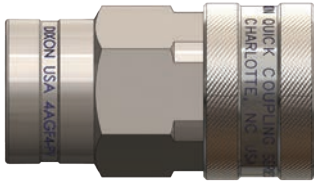
AG Series Profiles



AG-Series Hydraulic Couplings

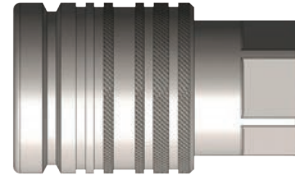
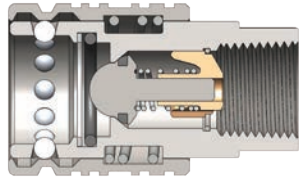


Body Size	AG-Series Agricultural Interchange Ball Valve Coupler (Female Threads)											
	Part Detail				Length		Maximum OD		Hex Inch	Weight Lb	Package Qty	
	Part Number	Threads	Material		Inch	mm	Inch	mm			Bag	Box
1/4"	2AGF2	1/4" - 18 NPTF	steel		2.11	53.5	1.06	27.0	7/8"	0.24	10	50
3/8"	3AGF3	3/8" - 18 NPTF	steel		2.40	61.0	1.34	34.0	1-1/16"	0.51	10	50
1/2"	4AGF4	1/2" - 14 NPTF	steel		2.62	66.5	1.49	37.8	1-1/4"	0.58	5	25
1/2"	4AGBF4	1/2" - 14 BSPP	steel		2.62	66.5	1.49	37.8	1-1/4"	0.58	5	25
1/2"	4AGOF4	3/4" - 16 ORB	steel		2.62	66.5	1.49	37.8	1-1/4"	0.64	5	25
1/2"	4AGOF5	7/8" - 14 ORB	steel		2.62	66.5	1.49	37.8	1-1/4"	0.59	5	25
1/2"	4AGF6	3/4" - 14 NPTF	steel		2.62	66.5	1.49	37.8	1-1/4"	0.71	5	25
1/2"	4AGBF6	3/4" - 14 BSPP	steel		2.62	66.5	1.49	37.8	1-1/4"	0.71	5	25
3/4"	6AGF6	3/4" - 14 NPTF	steel		3.35	85.0	1.89	48.0	1-1/2"	1.00	-	10
1"	8AGF8	1" - 11 1/2 NPTF	steel		3.80	96.5	2.17	55.0	1-13/16"	1.89	-	10

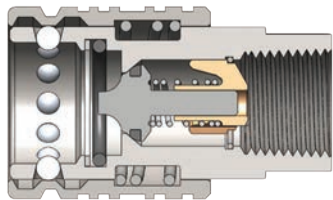


Body Size	AG-Series Agricultural Interchange Poppet Valve Coupler (Female Threads)											
	Part Detail				Length		Maximum OD		Hex Inch	Weight Lb	Package Qty	
	Part Number	Threads	Material		Inch	mm	Inch	mm			Bag	Box
1/4"	2AGF2-PV	1/4" - 18 NPTF	steel		2.11	53.5	1.06	27.0	7/8"	0.24	10	50
3/8"	3AGF3-PV	3/8" - 18 NPTF	steel		2.40	61.0	1.34	34.0	1-1/16"	0.51	10	50
1/2"	4AGF4-PV	1/2" - 14 NPTF	steel		2.62	66.5	1.49	37.8	1-1/4"	0.58	5	25
1/2"	4AGBF4-PV	1/2" - 14 BSPP	steel		2.62	66.5	1.49	37.8	1-1/4"	0.58	5	25
1/2"	4AGOF4-PV	3/4" - 16 ORB	steel		2.62	66.5	1.49	37.8	1-1/4"	0.64	5	25
1/2"	4AGOF5-PV	7/8" - 14 ORB	steel		2.62	66.5	1.49	37.8	1-1/4"	0.59	5	25
1/2"	4AGF6-PV	3/4" - 14 NPTF	steel		2.62	66.5	1.49	37.8	1-1/4"	0.71	5	25
1/2"	4AGBF6-PV	3/4" - 14 BSPP	steel		2.62	66.5	1.49	37.8	1-1/4"	0.71	5	25
3/4"	6AGF6-PV	3/4" - 14 NPTF	steel		3.35	85.0	1.89	48.0	1-1/2"	1.00	-	10
1"	8AGF8-PV	1" - 11 1/2 NPTF	steel		3.80	96.5	2.17	55.0	1-13/16"	1.89	-	10

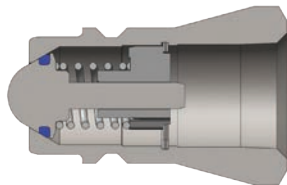
AG-Series Hydraulic Couplings



Body Size	AG-Series Agricultural Push-Pull Ball Valve Coupler (Female Threads)											
	Part Detail			Length		Maximum OD		Hex Inch	Weight Lb	Package Qty		
	Part Number	Threads	Material	Inch	mm	Inch	mm			Bag	Box	
1/2"	4AGF4-PS	1/2" - 14 NPTF	steel	2.50	63.5	1.49	37.8	1-1/16"	0.75	5	25	
1/2"	4AGOF4-PS	3/4" - 16 ORB	steel	2.98	75.8	1.489	37.8	1-1/16"	0.83	5	25	
1/2"	4AGOF5-PS	7/8" - 14 ORB	steel	2.98	75.8	1.489	37.8	1-1/16"	0.75	5	25	
1/2"	4AGF6-PS	3/4" - 14 NPTF	steel	3.06	77.8	1.489	37.8	1-3/16"	0.75	5	25	

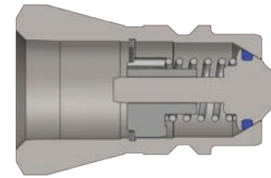


Body Size	AG-Series Agricultural Push-Pull Poppet Valve Coupler (Female Threads)											
	Part Detail			Length		Maximum OD		Hex Inch	Weight Lb	Package Qty		
	Part Number	Threads	Material	Inch	mm	Inch	mm			Bag	Box	
1/2"	4AGF4-PV-PS	1/2" - 14 NPTF	steel	2.50	63.5	1.49	37.8	1-1/16"	0.75	5	25	
1/2"	4AGOF4-PV-PS	3/4" - 16 ORB	steel	2.98	75.8	1.49	37.8	1-1/16"	0.83	5	25	
1/2"	4AGOF5-PV-PS	7/8" - 14 ORB	steel	2.98	75.8	1.49	37.8	1-1/16"	0.75	5	25	
1/2"	4AGF6-PV-PS	3/4" - 14 NPTF	steel	3.06	77.8	1.49	37.8	1-3/16"	0.75	5	25	



Body Size	AG-Series Agricultural Interchange Ball Valve Nipple (Female Threads)											
	Part Detail			Length		Maximum OD		Hex Inch	Weight Lb	Package Qty		
	Part Number	Threads	Material	Inch	mm	Inch	mm			Bag	Box	
1/4"	AG2F2	1/4" - 18 NPTF	steel	1.42	36.0	0.86	21.8	3/4"	0.08	10	50	
3/8"	AG3F3	3/8" - 18 NPTF	steel	1.59	40.5	1.08	27.4	15/16"	0.16	10	50	
1/2"	AG4F4	1/2" - 14 NPTF	steel	1.77	45.0	1.23	31.2	1-1/16"	0.20	5	25	
1/2"	AG4BF4	1/2" - 14 BSPP	steel	1.77	45.0	1.23	31.2	1-1/16"	0.20	5	25	
1/2"	AG4OF4	3/4" - 16 ORB	steel	1.77	45.0	1.23	31.2	1-1/16"	0.25	5	25	
1/2"	AG4OF5	7/8" - 14 ORB	steel	1.77	45.0	1.23	31.2	1-1/16"	0.25	5	25	
1/2"	AG4F6	3/4" - 14 NPTF	steel	1.77	45.0	1.37	34.8	1-3/16"	0.25	5	25	
1/2"	AG4BF6	3/4" - 14 BSPP	steel	1.77	45.0	1.37	34.8	1-3/16"	0.25	5	25	
3/4"	AG6F6	3/4" - 14 NPTF	steel	2.20	56.0	1.58	40.1	1-3/8"	0.50	-	10	
1"	AG8F8	1" - 11 1/2 NPTF	steel	2.48	63.0	1.87	47.5	1-5/8"	0.62	-	10	

AG-Series Hydraulic Couplings



Body Size	AG-Series Agricultural Interchange Poppet Valve Nipple (Female Threads)											
	Part Detail				Length		Maximum OD		Hex Inch	Weight Lb	Package Qty	
	Part Number	Threads	Material		Inch	mm	Inch	mm			Bag	Box
1/4"	AG2F2-PV	1/4" - 18 NPTF	steel		1.42	36.0	0.86	21.8	3/4"	0.08	10	50
3/8"	AG3F3-PV	3/8" - 18 NPTF	steel		1.59	40.5	1.08	27.4	15/16"	0.16	10	50
1/2"	AG4F4-PV	1/2" - 14 NPTF	steel		1.77	45.0	1.23	31.2	1-1/16"	0.20	5	25
1/2"	AG4BF4-PV	1/2"-14 BSPP	steel		1.77	45.0	1.23	31.2	1-1/16"	0.20	5	25
1/2"	AG4OF4-PV	3/4" - 16 ORB	steel		1.77	45.0	1.23	31.2	1-1/16"	0.25	5	25
1/2"	AG4OF5-PV	7/8" - 14 ORB	steel		1.77	45.0	1.23	31.2	1-1/16"	0.25	5	25
1/2"	AG4F6-PV	3/4" - 14 NPTF	steel		1.77	45.0	1.37	34.8	1-3/16"	0.25	5	25
1/2"	AG4BF6-PV	3/4" - 14 BSPP	steel		1.77	45.0	1.37	34.8	1-3/16"	0.25	5	25
3/4"	AG6F6-PV	3/4" - 14 NPTF	steel		2.20	56.0	1.58	40.1	1-3/8"	0.50	-	10
1"	AG8F8-PV	1" - 11 1/2 NPTF	steel		2.48	63.0	1.87	47.5	1-5/8"	0.62	-	10



Body Size	AG-Series Agricultural Interchange Coupler Dust Plug						
	Part Detail				Weight Lb	Package Qty	
	Part Number	Lanyard	Body			Bag	Box
1/4"	2AGDP	Elastomer	Elastomer		0.02	10	50
3/8"	3AGDP	Elastomer	Elastomer		0.04	10	50
1/2"	For 1/2" Please refer to the color coded K-Series Dust Plugs on pg. 78						
3/4"	6AGDP	Elastomer	Elastomer		0.07	5	25
1"	8AGDP	Elastomer	Elastomer		0.10	5	25



Body Size	AG-Series Agricultural Interchange Nipple Dust Cap						
	Part Detail				Weight Lb	Package Qty	
	Part Number	Lanyard	Body			Bag	Box
1/4"	AG2DC	Elastomer	Elastomer		0.02	10	50
3/8"	AG3DC	Elastomer	Elastomer		0.04	10	50
1/2"	For 1/2" Please refer to the color coded K-Series Dust Caps on pg. 78						
3/4"	AG6DC	Elastomer	Elastomer		0.07	5	25
1"	AG8DC	Elastomer	Elastomer		0.10	5	25