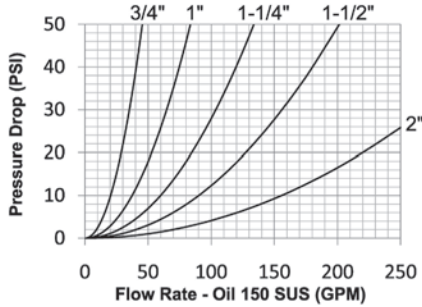


WS-Series Hydraulic Couplings

Interchange Data:

- High Pressure Wingstyle Interchange
- Snap-Tite 75-Series, Hydraulics Inc. Series-5TV



Materials:

- Machined components are manufactured using solid steel or 316 stainless steel bar stock.
- Stainless steel retaining rings, and springs maximize corrosion resistance and extend service life.
- Steel componentry is plated using ROHS Compliant Trivalent Chrome.
- Rugged high-strength steel shell-cast wing nut for threaded connect and disconnect operation.
- 316 stainless steel nipple connection-threads are coated to prevent galling during connection/disconnection.
- 1 1/4" and 1 1/2" 316 stainless steel couplers have a hex-nut connection sleeve.

Seal Components:

- Nitrile (Buna-N) seals are standard, providing a temperature range of -40°F to +250°F (-40°C to +121°C).
- PTFE anti-extrusion ring protects main coupling O-Ring from dynamic impulse pressure damage.
- Main valve seal is 'housed' to improve seal integrity during pressurized connection/disconnection.
- Blow-out Prevention (BOP) couplings contain fire service grade Viton® seals - coupling has been fire tested and Lloyd's certified to 700°C (1300°F) in accordance with API 16D (Certificate #NAO 0601041/1).

Rated Pressure Chart:

Body Size	WS-Series High Pressure Wingstyle Interchange (Connected)							
	Steel Coupler/Plug				316 SS Coupler/Plug			
	Maximum Working		Burst		Maximum Working		Burst	
	PSI	Bar	PSI	Bar	PSI	Bar	PSI	Bar
3/4"	5,000	345	32,800	2,200	3,000	200	20,000	1,400
1"	5,000	345	25,100	1,700	3,000	200	20,000	1,400
1-1/4"	5,000	345	15,000	1,000	3,000	200	15,000	1,000
1-1/2"	5,000	345	19,300	1,300	3,000	200	15,000	1,000
2"	5,000	345	15,000	1,000	3,000	200	15,000	1,000

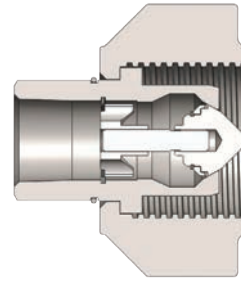
Technical Specifications:

Body Size	Interchange Standards				Functional Parameters				
	U.S. Military	U.S. Government	International Standards	ANSI/NFPA Standards	Locking Mechanism	Air Inclusion	Fluid Loss	Vacuum Inch HG	Flow ΔP = 30 PSI
3/4"	-	-	-	-	Threaded	10cc	10cc	27.4	35 GPM
1"	-	-	-	-	Threaded	23cc	15cc	27.4	65 GPM
1-1/4"	-	-	-	-	Threaded	50cc	30cc	27.4	105 GPM
1-1/2"	-	-	-	-	Threaded	100cc	60cc	27.4	160 GPM
2"	-	-	-	-	Threaded	200cc	135cc	27.4	270 GPM

List Price Seal Option Adders:

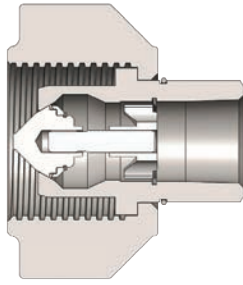
Body Size	Standard Seal Options										Standard Coupling Options					
	Viton®		EPDM		Mil-Nitrile		Fuel Nitrile		Silicone		Wrench Flats		View Port		Oxy-Clean	
	Pre	Add \$	Pre	Add \$	Pre	Add \$	Pre	Add \$	Pre	Add \$	Suf	Add \$	Suf	Add \$	Suf	Add \$
3/4"	F-		P-		M-		JF-		S-		-WF		-VP		-C1	
1"	F-		P-		M-		JF-		S-		-WF		-VP		-C1	
1-1/4"	F-		P-		M-		JF-		S-		-WF		-VP		-C1	
1-1/2"	F-		P-		M-		JF-		S-		-WF		-VP		-C1	
2"	F-		P-		M-		JF-		S-		-WF		-VP		-C1	

WS-Series Hydraulic Couplings

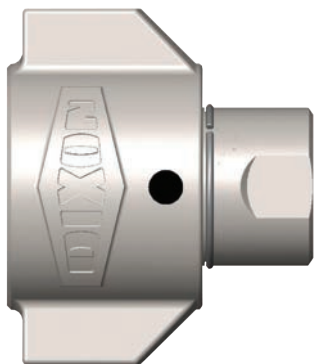


Body Size	WS-Series High Pressure Wingstyle Interchange Coupler (Female Threads)											
	Part Detail				Length		Maximum OD		Hex Inch	Weight Lb	Package Qty	
	Part Number	Threads	Material		Inch	mm	Inch	mm			Bag	Box
3/4"	6WSF4	1/2" - 14 NPTF	steel		2.76	70.1	3.23	82.0	-	1.86	-	5
3/4"	6WSF6	3/4" - 14 NPTF	steel		2.76	70.1	3.23	82.0	-	1.80	-	5
3/4"	6WSF6-SS	3/4" - 14 NPTF	316 stainless		2.76	70.1	3.23	82.0	-	1.80	-	5
3/4"	6WSBF6	3/4" - 14 BSPP	steel		2.76	70.1	3.23	82.0	-	1.80	-	5
3/4"	6WSBF6-SS	3/4" - 14 BSPP	316 stainless		2.76	70.1	3.23	82.0	-	1.80	-	5
3/4"	6WSOF6	1-1/16" - 12 ORB	steel		2.76	70.1	3.23	82.0	-	1.78	-	5
1"	8WSF8	1" - 11 1/2 NPTF	steel		3.45	87.6	4.00	101.6	-	3.30	-	5
1"	8WSF8-SS	1" - 11 1/2 NPTF	316 stainless		3.45	87.6	4.00	101.6	-	3.30	-	5
1"	8WSBF8	1" - 11 BSPP	steel		3.45	87.6	4.00	101.6	-	3.30	-	5
1"	8WSBF8-SS	1" - 11 BSPP	316 stainless		3.45	87.6	4.00	101.6	-	3.30	-	5
1"	8WSOF8	1-5/16" - 12 ORB	steel		3.45	87.6	4.00	101.6	-	3.26	-	5
1-1/4"	10WSF10	1-1/4" - 11 1/2 NPTF	steel		4.40	111.8	4.65	118.1	-	5.70	-	1
1-1/4"	10WSF10-SS	1-1/4" - 11 1/2 NPTF	316 stainless		4.40	111.8	4.65	118.1	-	5.70	-	1
1-1/4"	10WSBF10	1-1/4" - 11 BSPP	steel		4.40	111.8	4.65	118.1	-	5.70	-	1
1-1/4"	10WSBF10-SS	1-1/4" - 11 BSPP	316 stainless		4.40	111.8	4.65	118.1	-	5.70	-	1
1-1/4"	10WSOF10	1-5/8" - 12 ORB	steel		4.40	111.8	4.65	118.1	-	5.68	-	1
1-1/2"	12WSF12	1-1/2" - 11 1/2 NPTF	steel		5.13	130.3	5.43	137.9	-	8.90	-	1
1-1/2"	12WSF12-SS	1-1/2" - 11 1/2 NPTF	316 stainless		5.13	130.3	5.43	137.9	-	8.90	-	1
1-1/2"	12WSBF12	1-1/2" - 11 BSPP	steel		5.13	130.3	5.43	137.9	-	8.90	-	1
1-1/2"	12WSBF12-SS	1-1/2" - 11 BSPP	316 stainless		5.13	130.3	5.43	137.9	-	8.90	-	1
1-1/2"	12WSOF12	1-7/8" - 12 ORB	steel		5.13	130.3	5.43	137.9	-	8.87	-	1
2"	16WSF16	2" - 11 1/2 NPTF	steel		6.09	154.7	6.73	170.9	-	17.10	-	1
2"	16WSF16-SS	2" - 11 1/2 NPTF	316 stainless		6.09	154.7	6.73	170.9	-	17.10	-	1
2"	16WSBF16	2" - 11 BSPP	steel		6.09	154.7	6.73	170.9	-	17.10	-	1
2"	16WSBF16-SS	2" - 11 BSPP	316 stainless		6.09	154.7	6.73	170.9	-	17.10	-	1
2"	16WSOF16	2" - 12 ORB	steel		6.09	154.7	6.73	170.9	-	16.96	-	1

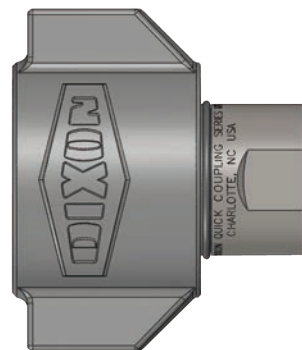
WS-Series Hydraulic Couplings



Body Size	WS-Series Blowout Prevention Safety Coupler (Female Threads)											
	Part Detail				Length		Maximum OD		Hex Inch	Weight Lb	Package Qty	
	Part Number	Threads	Material		Inch	mm	Inch	mm			Bag	Box
3/4"	6WSF4-BOP	1/2" - 14 NPTF	steel		2.76	70.1	3.23	82.0	-	1.86	-	5
3/4"	6WSF6-BOP	3/4" - 14 NPTF	steel		2.76	70.1	3.23	82.0	-	1.80	-	5
3/4"	6WSF6-SS-BOP	3/4" - 14 NPTF	316 stainless		2.76	70.1	3.23	82.0	-	1.80	-	5
3/4"	6WSBF6-BOP	3/4" - 14 BSPP	steel		2.76	70.1	3.23	82.0	-	1.80	-	5
1"	8WSF8-BOP	1" - 11 1/2 NPTF	steel		3.45	87.6	4.00	101.6	-	3.30	-	5
1"	8WSF8-SS-BOP	1" - 11 1/2 NPTF	316 stainless		3.45	87.6	4.00	101.6	-	3.30	-	5
1"	8WSBF8-BOP	1" - 11 BSPP	steel		3.45	87.6	4.00	101.6	-	3.30	-	5
1-1/4"	10WSF10-BOP	1-1/4" - 11 1/2 NPTF	steel		4.40	111.8	4.65	118.1	-	5.70	-	1
1-1/4"	10WSBF10-BOP	1-1/4" - 11 BSPP	steel		4.40	111.8	4.65	118.1	-	5.70	-	1
1-1/2"	12WSF12-BOP	1-1/2" - 11 1/2 NPTF	steel		5.13	130.3	5.43	137.9	-	8.90	-	1
1-1/2"	12WSBF12-BOP	1-1/2" - 11 BSPP	steel		5.13	130.3	5.43	137.9	-	8.90	-	1
2"	16WSF16-BOP	2" - 11 1/2 NPTF	steel		6.09	154.7	6.73	170.9	-	17.10	-	1
2"	16WSBF16-BOP	2" - 11 BSPP	steel		6.09	154.7	6.73	170.9	-	17.10	-	1

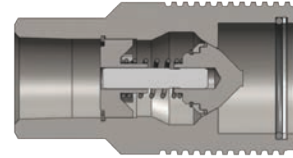


WS coupler with view port example

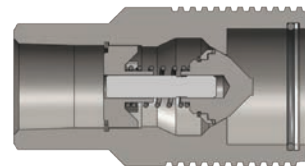


WS coupler with wrench flats example
* Wrench flats may result in reduced pressure performance.

WS-Series Hydraulic Couplings

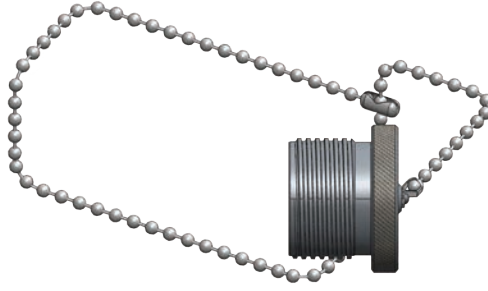


Body Size	WS-Series High Pressure Wingstyle Interchange Nipple (Female Threads)											
	Part Detail				Length		Maximum OD		Hex Inch	Weight Lb	Package Qty	
	Part Number	Threads	Material		Inch	mm	Inch	mm			Bag	Box
3/4"	WS6F4	1/2" - 14 NPTF	steel		3.27	83.1	1.74	44.2	-	1.23	-	5
3/4"	WS6F6	3/4" - 14 NPTF	steel		3.27	83.1	1.74	44.2	-	1.20	-	5
3/4"	WS6F6-SS	3/4" - 14 NPTF	316 stainless		3.27	83.1	1.74	44.2	-	1.20	-	5
3/4"	WS6BF6	3/4" - 14 BSPP	steel		3.27	83.1	1.74	44.2	-	1.20	-	5
3/4"	WS6BF6-SS	3/4" - 14 BSPP	316 stainless		3.27	83.1	1.74	44.2	-	1.20	-	5
3/4"	WS6OF6	1-1/16" - 12 ORB	steel		3.27	83.1	1.74	44.2	-	1.17	-	5
1"	WS8F8	1" - 11 1/2 NPTF	steel		4.18	106.2	2.25	57.2	-	2.50	-	5
1"	WS8F8-SS	1" - 11 1/2 NPTF	316 stainless		4.18	106.2	2.25	57.2	-	2.50	-	5
1"	WS8BF8	1" - 11 BSPP	steel		4.18	106.2	2.25	57.2	-	2.50	-	5
1"	WS8BF8-SS	1" - 11 BSPP	316 stainless		4.18	106.2	2.25	57.2	-	2.50	-	5
1"	WS8OF8	1-5/16" - 12 ORB	steel		4.18	106.2	2.25	57.2	-	2.46	-	5
1-1/4"	WS10F10	1-1/4" - 11 1/2 NPTF	steel		5.38	136.7	2.63	66.8	-	4.10	-	1
1-1/4"	WS10F10-SS	1-1/4" - 11 1/2 NPTF	316 stainless		5.38	136.7	2.63	66.8	-	4.10	-	1
1-1/4"	WS10BF10	1-1/4" - 11 BSPP	steel		5.38	136.7	2.63	66.8	-	4.10	-	1
1-1/4"	WS10BF10-SS	1-1/4" - 11 BSPP	316 stainless		5.38	136.7	2.63	66.8	-	4.10	-	1
1-1/4"	WS10OF10	1-5/8" - 12 ORB	steel		5.38	136.7	2.63	66.8	-	4.18	-	1
1-1/2"	WS12F12	1-1/2" - 11 1/2 NPTF	steel		5.98	151.9	3.25	82.6	-	6.90	-	1
1-1/2"	WS12F12-SS	1-1/2" - 11 1/2 NPTF	316 stainless		5.98	151.9	3.25	82.6	-	6.90	-	1
1-1/2"	WS12BF12	1-1/2" - 11 BSPP	steel		5.98	151.9	3.25	82.6	-	6.90	-	1
1-1/2"	WS12BF12-SS	1-1/2" - 11 BSPP	316 stainless		5.98	151.9	3.25	82.6	-	6.90	-	1
1-1/2"	WS12OF12	1-7/8" - 12 ORB	steel		5.98	151.9	3.25	82.6	-	6.86	-	1
2"	WS16F16	2" - 11 1/2 NPTF	steel		7.05	179.1	4.00	101.6	-	12.50	-	1
2"	WS16F16-SS	2" - 11 1/2 NPTF	316 stainless		7.05	179.1	4.00	101.6	-	12.50	-	1
2"	WS16BF16	2" - 11 BSPP	steel		7.05	179.1	4.00	101.6	-	12.50	-	1
2"	WS16BF16-SS	2" - 11 BSPP	316 stainless		7.05	179.1	4.00	101.6	-	12.50	-	1
2"	WS16OF16	2" - 12 ORB	steel		7.05	179.1	4.00	101.6	-	12.44	-	1

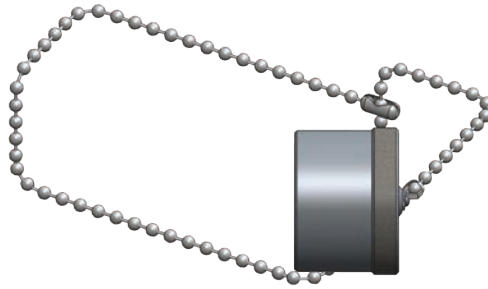


Body Size	WS-Series Blowout Prevention Safety Nipple (Female Threads)											
	Part Detail				Length		Maximum OD		Hex Inch	Weight Lb	Package Qty	
	Part Number	Threads	Material		Inch	mm	Inch	mm			Bag	Box
3/4"	WS6F4-BOP	1/2" - 14 NPTF	steel		3.27	83.1	1.74	44.2	-	1.23	-	5
3/4"	WS6F6-BOP	3/4" - 14 NPTF	steel		3.27	83.1	1.74	44.2	-	1.20	-	5
3/4"	WS6F6-SS-BOP	3/4" - 14 NPTF	316 stainless		3.27	83.1	1.74	44.2	-	1.20	-	5
3/4"	WS6BF6-BOP	3/4" - 14 BSPP	steel		3.27	83.1	1.74	44.2	-	1.20	-	5
1"	WS8F8-BOP	1" - 11 1/2 NPTF	steel		4.18	106.2	2.25	57.2	-	2.50	-	5
1"	WS8F8-SS-BOP	1" - 11 1/2 NPTF	316 stainless		4.18	106.2	2.25	57.2	-	2.50	-	5
1"	WS8BF8-BOP	1" - 11 BSPP	steel		4.18	106.2	2.25	57.2	-	2.50	-	5
1-1/4"	WS10F10-BOP	1-1/4" - 11 1/2 NPTF	steel		5.38	136.7	2.63	66.8	-	4.10	-	1
1-1/4"	WS10BF10-BOP	1-1/4" - 11 BSPP	steel		5.38	136.7	2.63	66.8	-	4.10	-	1
1-1/2"	WS12F12-BOP	1-1/2" - 11 1/2 NPTF	steel		5.98	151.9	3.25	82.6	-	6.90	-	1
1-1/2"	WS12BF12-BOP	1-1/2" - 11 BSPP	steel		5.98	151.9	3.25	82.6	-	6.90	-	1
2"	WS16F16-BOP	2" - 11 1/2 NPTF	steel		7.05	179.1	4.00	101.6	-	12.50	-	1
2"	WS16BF16-BOP	2" - 11 BSPP	steel		7.05	179.1	4.00	101.6	-	12.50	-	1

WS-Series Hydraulic Couplings



Body Size	WS-Series Coupler Rigid Dust Plug						
	Part Detail			Weight Lb	Package Qty		
	Part Number	Lanyard	Body		Bag	Box	
3/4"	6WSDP-A	SS Bead Chain	aluminum	0.31	5	25	
1"	8WSDP-A	SS Bead Chain	aluminum	0.48	-	10	
1-1/4"	10WSDP-A	SS Bead Chain	aluminum	0.61	-	10	
1-1/2"	12WSDP-A	SS Bead Chain	aluminum	0.86	-	5	
2"	16WSDP-A	SS Bead Chain	aluminum	1.05	-	5	



Body Size	WS-Series Nipple Rigid Dust Cap						
	Part Detail			Weight Lb	Package Qty		
	Part Number	Lanyard	Body		Bag	Box	
3/4"	WS6DC-A	SS Bead Chain	aluminum	0.31	5	25	
1"	WS8DC-A	SS Bead Chain	aluminum	0.48	-	10	
1-1/4"	WS10DC-A	SS Bead Chain	aluminum	0.61	-	10	
1-1/2"	WS12DC-A	SS Bead Chain	aluminum	0.86	-	5	
2"	WS16DC-A	SS Bead Chain	aluminum	1.05	-	5	